

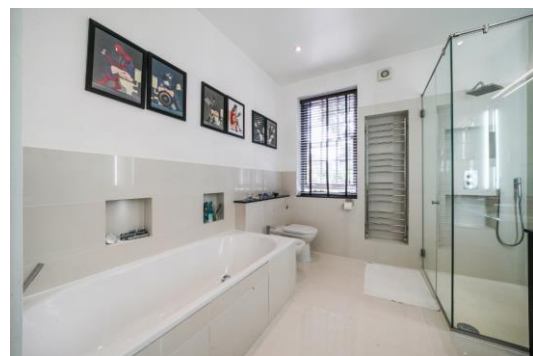


Ordnance Hill

St John's Wood, NW8

£10,000 per month
(£2,307.69 per week)

A modern, terraced family home with private patio garden and additional terrace within walking distance of ASL and St John's Wood High Street.



Ordnance Hill

St John's Wood, NW8

- Terraced House
- 3 Bedrooms, 2.5 Bathrooms
- Garden, Terrace, Wood Floors
- Close to ASL and St John's Wood Station



A modern, terraced family home with private patio garden and additional terrace within walking distance of ASL and St John's Wood High Street.

Downstairs comprises large open plan kitchen/reception room with double doors leading to the rear garden and a WC. The upper two floors comprise large principal bedroom with en-suite bathroom, and a further two double bedrooms and shower room.

Additionally there is a terrace over the flat roof.

Minimum Term: 12 months
Deposit Required: £13,846.15
Local Authority: City of Westminster
Council Tax Band: G
EPC Rating: D
Furnished, Part Furnished, Unfurnished

Energy Efficiency Rating		
	Current	Potential
Very energy efficient - lower running costs		
(92-100) A		
(81-91) B		85
(69-80) C		
(55-68) D	68	
(39-54) E		
(21-38) F		
(1-20) G		
Not energy efficient - higher running costs		
England, Scotland & Wales		EU Directive 2002/91/EC

Chestertons St John's Wood Lettings

105 St. John's Wood Terrace
 London
 NW8 6PL
 stjohswood@chestertons.co.uk
 02030408622
 chestertons.co.uk

Additional tenant charges apply (fees apply to non-AST tenancies only)
 Tenancy Agreement Fee: £300
 References per Tenant/Guarantor: £60
 Inventory check (approx. £100 – £250 inc. VAT)
 chestertons.co.uk/property-to-rent/applicable-fees

Ordnance Hill, NW8 6PS

Approx Gross Internal Area = 148.83 sq m / 1602 sq ft

Garden = 46.3 sq m / 498 sq ft

Terrace = 31.9 sq m / 343 sq ft

Total = 227.03 sq m / 2444 sq ft



Ref :

Copyright

**BLEU
PLAN**

The Floor plan is not to scale and measurements and areas shown are approximate and therefore should be used for illustrative purposes only. The plan has been prepared in accordance with the RICS code of Measuring Practice and whilst we have confidence in the information produced it must not be relied on. Maximum lengths and widths are represented on the floor plan. If there is any aspect of particular importance, you should carry out or commission your own inspection of the property.

Copyright @ BLEUPLAN

