

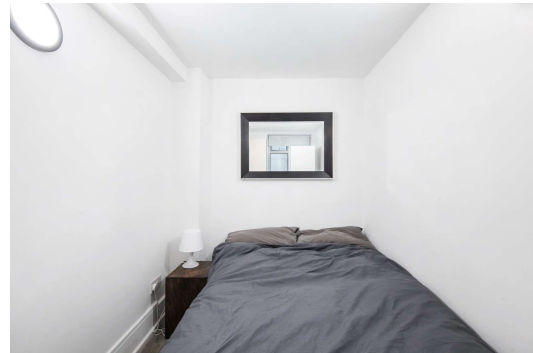
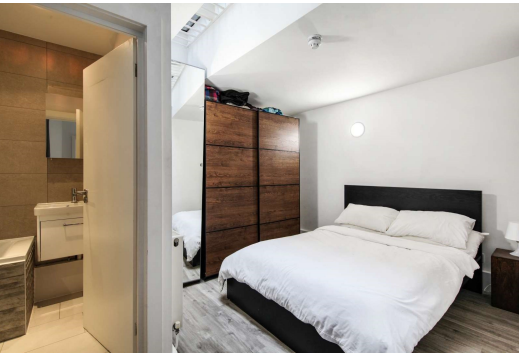


Bell Street

Marylebone, NW1

£2,950 per month
(£680.77 per week)

A modern two bedroom, two bathroom ground floor apartment with small private courtyard close to Marylebone Station.



Bell Street

Marylebone, NW1

- Lower Ground Floor Apartment
- 2 Bedrooms, 2 Bathrooms
- Modern, Furnished, Private Entrance
- Close to Marylebone Station



A modern two bedroom, two bathroom ground floor apartment with small private courtyard close to Marylebone Station.

The property comprises two double bedrooms, two bathrooms (one en-suite), open plan kitchen/reception room and a small private courtyard.

Minimum Term: 6 months
Deposit Required: £3,403.85
Local Authority: City of Westminster
Council Tax Band: D
EPC Rating: To be confirmed
Furnished

Chestertons St John's Wood Lettings

105 St. John's Wood Terrace
London
NW8 6PL
stjohnswood@chestertons.co.uk
02030408622
chestertons.co.uk

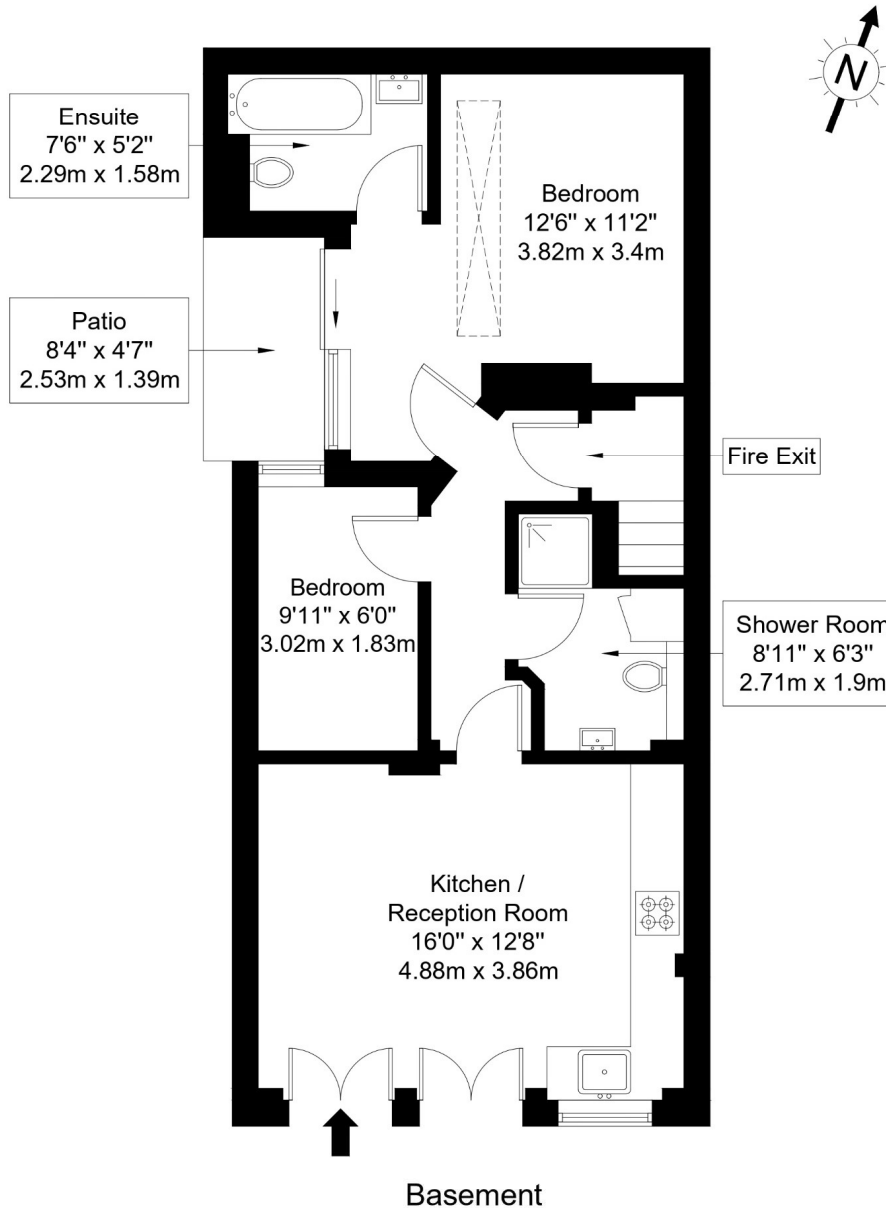
Additional tenant charges apply (fees apply to non-AST tenancies only)
Tenancy Agreement Fee: £300
References per Tenant/Guarantor: £60
Inventory check (approx. £100 – £250 inc. VAT)
chestertons.co.uk/property-to-rent/applicable-fees

Bell Street, NW1 6TL

Approx Gross Internal Area = 54.7 sq m / 589 sq ft

Patio = 3.6 sq m / 39 sq ft

Total = 58.3 sq m / 628 sq ft



Ref :

Copyright

**BLEU
PLAN**

The Floor plan is not to scale and measurements and areas shown are approximate and therefore should be used for illustrative purposes only. The plan has been prepared in accordance with the RICS code of Measuring Practice and whilst we have confidence in the information produced it must not be relied on. Maximum lengths and widths are represented on the floor plan. If there is any aspect of particular importance, you should carry out or commission your own inspection of the property.

Copyright @ BLEUPLAN

