



Portman Gate

104 Lisson Grove, NW1

£350 per week
(£1,516.67 pcm)

VIDEO TOUR AVAILABLE A good sized split level one bedroom apartment within close proximity to Marylebone station.



Portman Gate

104 Lisson Grove, NW1

- A Bright and Spacious Apartment in a Portered Building
- 1 Bedroom, 1 Bathroom
- Swimming Pool, Gym, Parking Space
- Close to Marylebone Stations



A well presented, spacious split level 1 bedroom apartment situated in a portered purpose built block close to Marylebone underground and train stations and array of shops.

The property comprises; a good sized open plan kitchen/reception room with integrated appliances, a modern bathroom, a double bedroom with fitted wardrobe.

Additional benefits include access to the communal swimming pool and gym, and one allocated parking space.

Tenure: To be advised

Furnished, Part Furnished

Additional tenant charges apply (fees apply to non-AST tenancies only)

Tenancy Agreement Fee: £300

References per Tenant/Guarantor: £60

Inventory check (approx. £100 – £250 inc. VAT)

[chestertons.com/property-to-rent/applicable-fees](https://www.chestertons.com/property-to-rent/applicable-fees)

Energy Efficiency Rating		
	Current	Potential
Very energy efficient - lower running costs		
(92+) A		
(81-91) B		
(69-80) C		
(55-68) D	63	64
(39-54) E		
(21-38) F		
(1-20) G		
Not energy efficient - higher running costs		
England, Scotland & Wales EU Directive 2002/91/EC		

Chestertons St John's Wood Lettings

122 St John's Wood High Street

St John's Wood

London

NW8 7SG

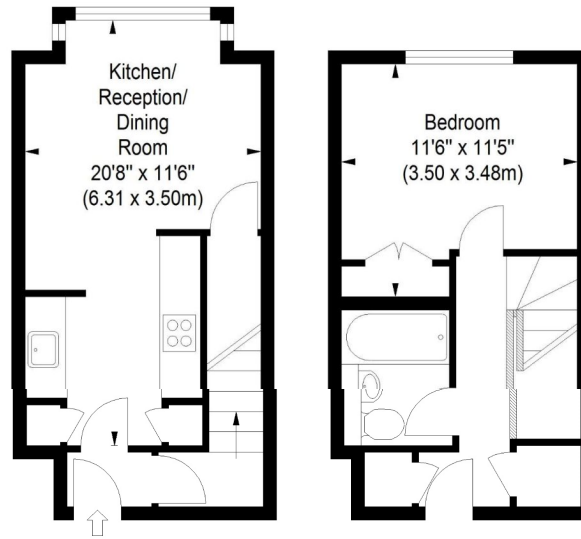
lettings.stjohnswood@chestertons.com

02030408622

[chestertons.com](https://www.chestertons.com)

Portman Gate, NW1

Approximate Gross Internal Area
520 sq ft / 48.31 sq m



Third Floor

Fourth Floor

ILLUSTRATION FOR IDENTIFICATION PURPOSES ONLY

ALL MEASUREMENTS ARE MAXIMUM, AND INCLUDE WINDOW BAYS AND WARDROBES WHERE APPLICABLE
THIS PLAN MUST NOT BE REPRODUCED BY ANY OTHER PERSON WITHOUT PERMISSION