

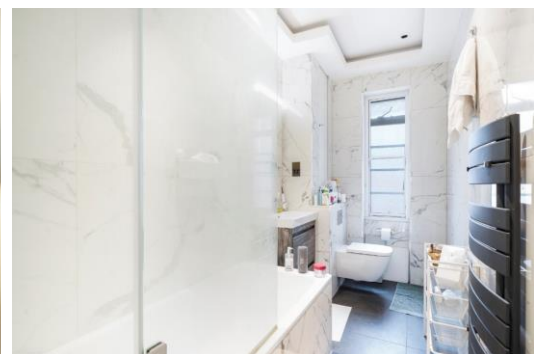


Dorset House

Gloucester Place, NW1

£5,500 per month
(£1,269.23 per week)

A modern three bedroom apartment in a sought after portered block just moments from Baker Street and Marylebone Village.



Dorset House

Gloucester Place, NW1

- Sixth Floor Flat
- 3 Bedrooms, 2 Bathrooms
- Porter, Lift
- Moments from Baker Street Station



A modern three bedroom apartment in a sought after portered block just moments from Baker Street and Marylebone Village.

The property comprises three bedrooms, two bathrooms, balconies, fitted kitchen, and large reception room.

Minimum Term: 6 months
Deposit Required: £0.00
Local Authority: City of Westminster
Council Tax Band: F
EPC Rating: C
Furnished

Energy Efficiency Rating		
	Current	Potential
Very energy efficient - lower running costs		
A (92-100)		
B (81-91)		83
C (69-80)	71	
D (55-68)		
E (39-54)		
F (21-38)		
G (1-20)		
Not energy efficient - higher running costs		
England, Scotland & Wales		EU Directive 2002/91/EC

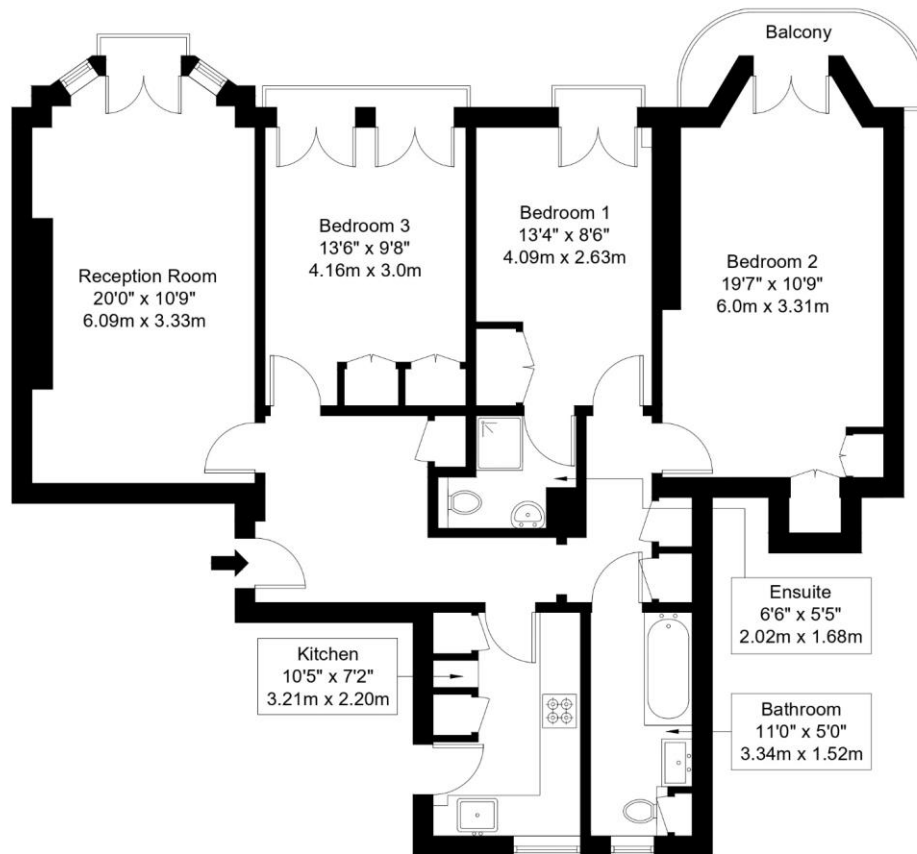
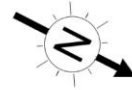
Chestertons St John's Wood Lettings

105 St. John's Wood Terrace
 London
 NW8 6PL
 stjohswood@chestertons.co.uk
 02030408622
 chestertons.co.uk

Additional tenant charges apply (fees apply to non-AST tenancies only)
 Tenancy Agreement Fee: £300
 References per Tenant/Guarantor: £60
 Inventory check (approx. £100 – £250 inc. VAT)
[chestertons.co.uk/property-to-rent/applicable-fees](https://www.chestertons.co.uk/property-to-rent/applicable-fees)

Gloucester Place, NW1 5AQ

Approx Gross Internal Area = 96.21 sq m / 1 036 sq ft



Sixth Floor

Ref :

Copyright **BLEU
PLAN**

The Floor plan is not to scale and measurements and areas shown are approximate and therefore should be used for illustrative purposes only. The plan has been prepared in accordance with the RICS code of Measuring Practice and whilst we have confidence in the information produced it must not be relied on. Maximum lengths and widths are represented on the floor plan. If there is any aspect of particular importance, you should carry out or commission your own inspection of the property.

Copyright @ BLEUPLAN

