

CHESTERTONS



Elm Tree Road

St John's Wood, NW8 9JR

“A substantial five bedroom house situated in the heart of St John's Wood with extra staff bedroom, pool, lift, security systems and garden. Within walking distance of ASL and St John's Wood Underground Station.”

Long let: £8,076.92 per week / £35,000 per month

5



7



5,334
sqft





Property Description

A spacious five-bedroom semi-detached house located in the heart of St John's Wood, just a short distance from the American School in London (ASL), the shops and restaurants of St John's Wood High Street, and the Jubilee Line Underground Station.

The ground and lower floors feature an open-plan kitchen/living area with integrated appliances, a double reception room with expansive bifold doors opening onto the rear garden, a staff kitchen and bedroom with an en-suite shower room, a separate staff entrance, a gym, a swimming pool, a guest bedroom, a guest bathroom, and an additional reception room.

The upper two floors offer a luxurious master suite with separate his and hers bathrooms and dressing rooms, another bedroom with an en-suite bathroom, two additional bedrooms each with their own en-suite, a reception room with a kitchenette, and an extra dressing room.

Additional features include a swimming pool with a wave machine, a private gym, staff access, a private gate leading to the garage, security shutters, a comprehensive security system, underfloor heating, and air conditioning in the upper-floor bedrooms.





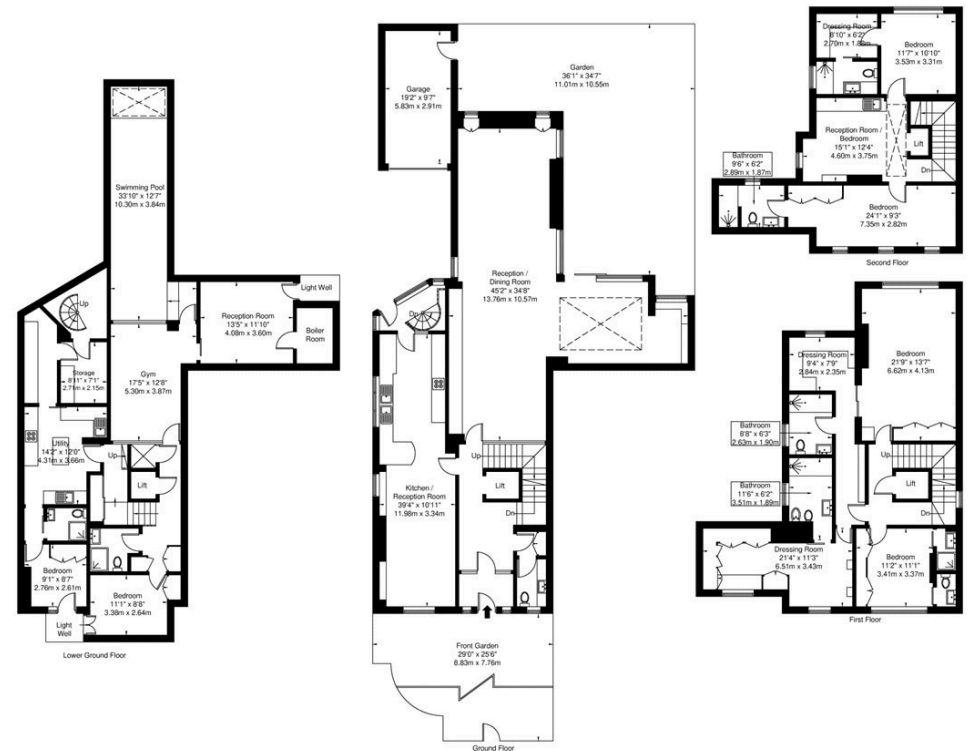
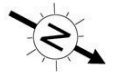


Elm Tree Road, NW8 9JR

Approx. Gross Internal Area = 478.7 sq m / 5152 sq ft

Garage = 16.9 sq m / 182 sq ft

Total = 495.6 sq m / 5334 sq ft



Ref

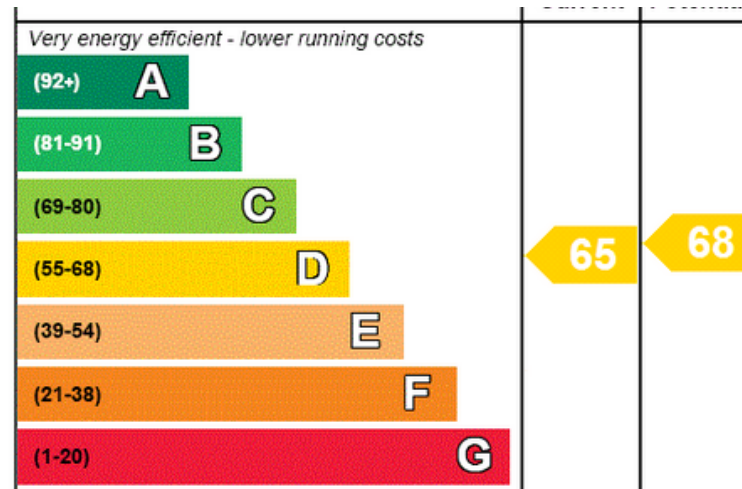
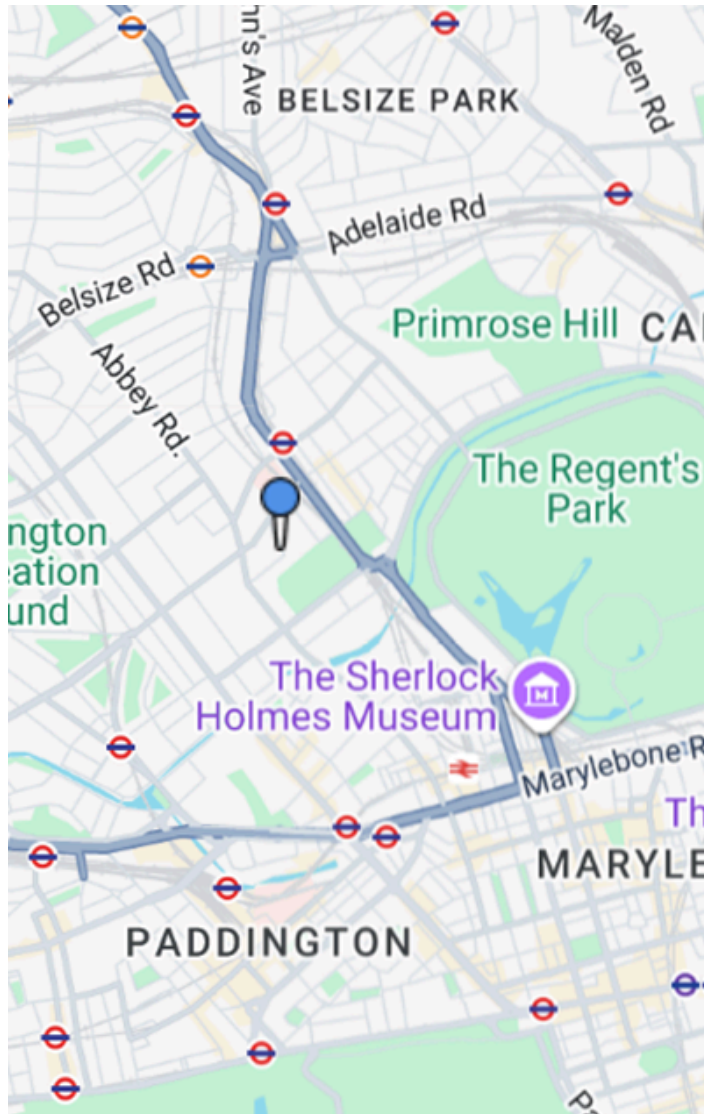
Copyright **BLEUPLAN**

The Floor plan is not to scale and measurements and areas shown are approximate and therefore should be used for illustrative purposes only. The plan has been prepared in accordance with the RICS code of Measuring Practice and whilst we have confidence in the information produced it must not be relied on. If there is any aspect of particular importance, you should carry out or commission your own inspection of the property.

Copyright @ BLEUPLAN

Property Location

CHESTERTONS



Additional tenant charges apply (fees apply to non-AST tenancies only)

Tenancy Agreement Fee: £300

References per Tenant/Guarantor: £60

Inventory check (approx. £100 – £250 inc. VAT)

[chestertons.co.uk/property-to-rent/applicable-fees](https://www.chestertons.co.uk/property-to-rent/applicable-fees)

Chestertons St John's Wood

105 St John's Wood Terrace

London

NW8 7SG

[chestertons.co.uk](https://www.chestertons.co.uk)

Chesterton Global Ltd trading as Chestertons for themselves and for the vendor of this property whose agents they are, give notice that (i) these particulars do not constitute any part of an offer or contract, (ii) all statements contained within these particulars are made without responsibility on the part of Chestertons or the vendor, (iii) whilst made in good faith, none of the statements contained within these particulars are to be relied upon as a statement or representation of fact, (iv) any intending purchasers must satisfy themselves by inspection or otherwise as to the correctness of each of the statements contained within these particulars, (v) the vendor does not make or give either Chestertons or any person in their employment any authority to make or give representation or warranty whatsoever in relation to this property. Wide angle lenses may be used. ©Copyright Chestertons | Chesterton Global Ltd | Registered Office 40 Connaught Street, Hyde Park, London W2 2AB Registered Company Number 05334580.