



Loudoun Road

St John's Wood, NW8

A spacious townhouse arranged over three floors in the heart of St. John's Wood and within a walking distance of The American School of London.



Loudoun Road

St John's Wood, NW8

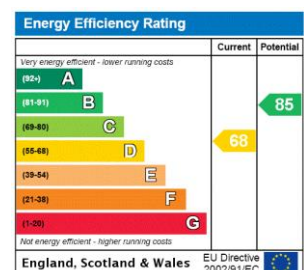
- A Spacious Townhouse
- 4 Bedroom, 2 Bathroom, 1 W/C
- Private Garden/Patio
- Moments from St. John's Wood High Street



This spacious townhouse comprises four double bedrooms with fitted in wardrobes, two bathrooms (one en-suite), one W/C, two large reception rooms, separate fully equipped kitchen, private garden/patio and plenty of storage.

The property is located moments from the amenities on St. John's Wood High Street, St John's Wood Underground (Jubilee Line) and South Hampstead Overground.

Minimum Term: 6 months
Deposit Required: £9,900.00
Local Authority: City Of Westminster
Council Tax Band: H
EPC Rating: D
Unfurnished



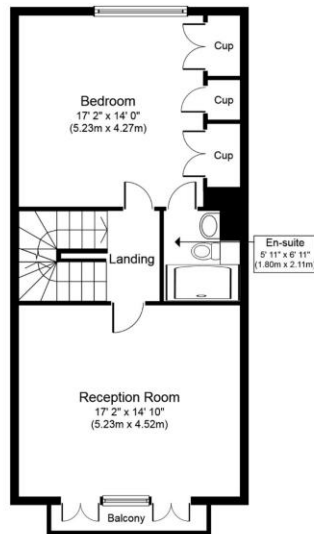
Chestertons St John's Wood Lettings

122 St John's Wood High Street
 St John's Wood
 London
 NW8 7SG
lettings.stjohnswood@chestertons.com
 02030408622
chestertons.com

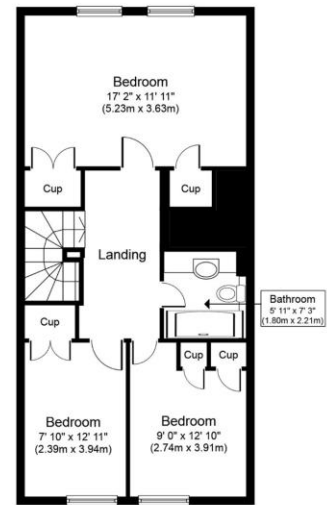
Additional tenant charges apply (fees apply to non-AST tenancies only)
 Tenancy Agreement Fee: £300
 References per Tenant/Guarantor: £60
 Inventory check (approx. £100 – £250 inc. VAT)
chestertons.com/property-to-rent/applicable-fees



Ground Floor
Approximate Floor Area
626 sq. ft.
(58.20 sq. m)



First Floor
Approximate Floor Area
640 sq. ft.
(59.50 sq. m.)



Second Floor
Approximate Floor Area
640 sq. ft.
(59.50 sq. m.)

Whilst every attempt has been made to ensure the accuracy of the floor plan contained here, measurements of doors, windows, rooms and any other items are approximate and no responsibility is taken for any error, omission, or mis-statement. This plan is for illustrative purposes only and should be used as such by any prospective purchaser or tenant. The services, systems and appliances shown have not been tested and no guarantee as to their operability or efficiency can be given.

www.virtual360.net

