



Bradman House

Abercorn Place, NW8

£3,000 per month
(£692.31 per week)

A spacious three bedroom split level apartment set within a secure purpose built gated development, moments from Maida Vale Station.

CHESTERTONS



Bradman House

Abercorn Place, NW8

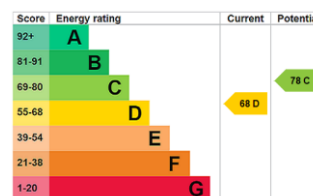
-



A spacious three bedroom split level apartment set within a secure purpose built gated development, moments from Maida Vale Station.

The apartment comprises three double bedrooms, two bathrooms, fitted kitchen and separate reception room.

Minimum Term: 12 months
Deposit Required: £3,461.54
Local Authority: City Of Westminster
Council Tax Band: F
EPC Rating: D
Furnished



Chestertons St John's Wood Lettings

105 St. John's Wood Terrace
 London
 NW8 6PL
stjohnslettingsusers@chestertons.co.uk
 02030408622
chestertons.co.uk

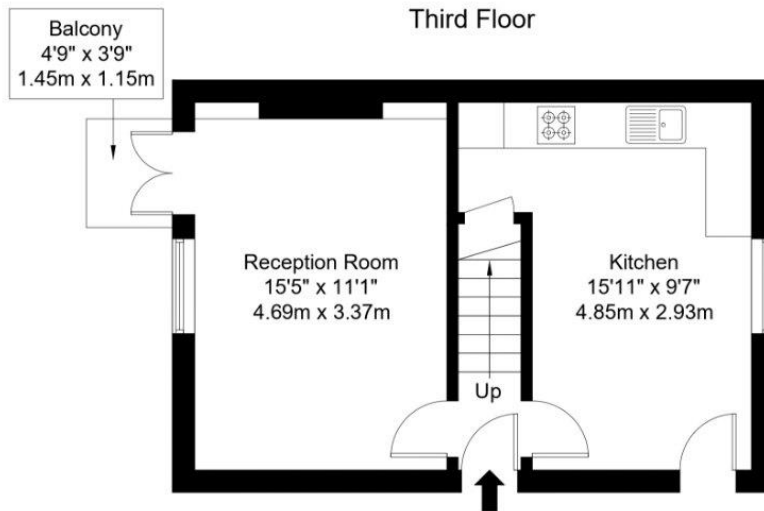
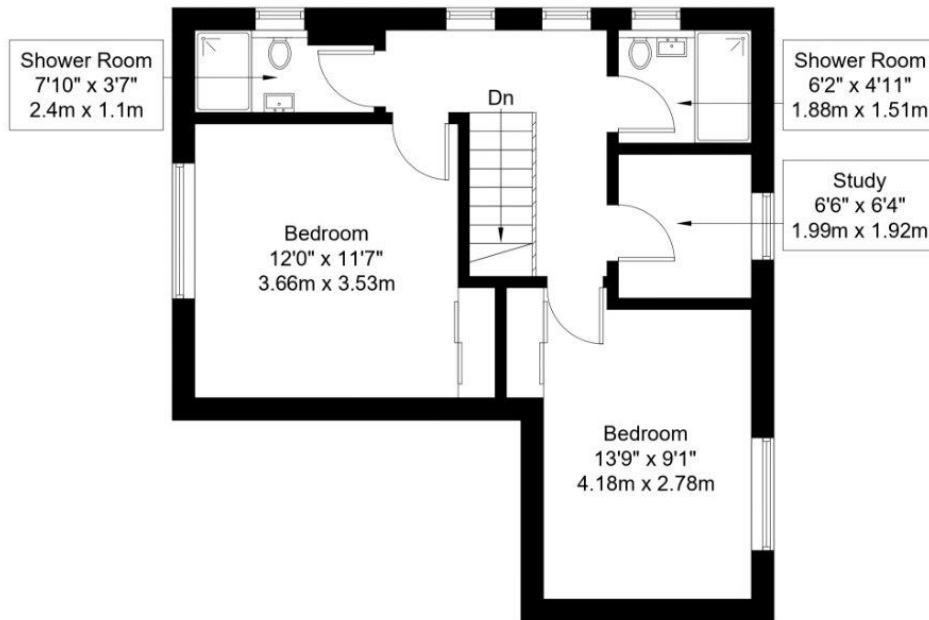
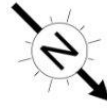
Additional tenant charges apply (fees apply to non-AST tenancies only)
 Tenancy Agreement Fee: £300
 References per Tenant/Guarantor: £60
 Inventory check (approx. £100 – £250 inc. VAT)
chestertons.co.uk/property-to-rent/applicable-fees

Bradman House, NW8 9XY

Approx Gross Internal Area = 80.5 sq m / 867 sq ft

Balcony = 1.7 sq m / 18 sq ft

Total = 82.2 sq m / 885 sq ft



Ref :

Copyright

**BLEU
PLAN**

The Floor plan is not to scale and measurements and areas shown are approximate and therefore should be used for illustrative purposes only. The plan has been prepared in accordance with the RICS code of Measuring Practice and whilst we have confidence in the information produced it must not be relied on. Maximum lengths and widths are represented on the floor plan. If there is any aspect of particular importance, you should carry out or commission your own inspection of the property.

Copyright @ BleuPlan

