



Marlborough Place

St John's Wood, NW8

£5,000 per month
(£1,153.85 per week)

A spacious and modern two bedroom ground floor apartment in a converted house with private garden, within close proximity to St John's Wood High Street and Underground Station.



Marlborough Place

St John's Wood, NW8

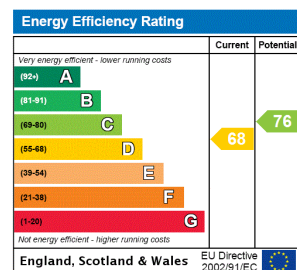
- Garden Flat
- 2 Bedrooms, 2 Bathrooms
- Modern, Wood Floors, Furnished
- Close to St John's Wood High Street



A spacious and modern two bedroom ground floor apartment in a converted house with private garden, within close proximity to St John's Wood High Street and Underground Station.

The property comprises two double bedrooms, two bathrooms (one en-suite), utility cupboard, fitted kitchen and double reception room.

Minimum Term: 6 months
Deposit Required: £5,769.23
Local Authority: Westminster
Council Tax Band: E
EPC Rating: D
Furnished



Chestertons St John's Wood Lettings

105 St. John's Wood Terrace
 London
 NW8 6PL
stjohnswood@chestertons.co.uk
 02030408622
chestertons.co.uk

Additional tenant charges apply (fees apply to non-AST tenancies only)
 Tenancy Agreement Fee: £300
 References per Tenant/Guarantor: £60
 Inventory check (approx. £100 – £250 inc. VAT)
chestertons.co.uk/property-to-rent/applicable-fees

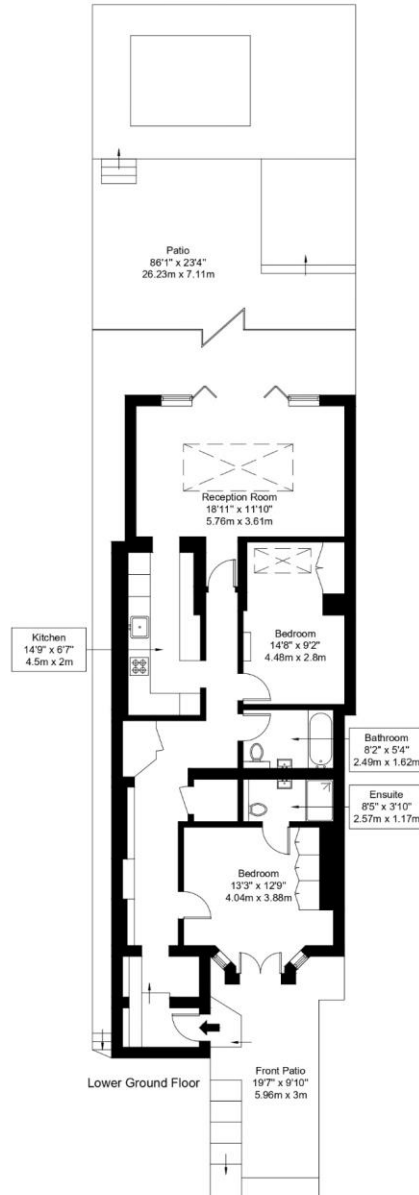
Marlborough Place, NW8 0PL

Approx Gross Internal Area = 99.2 sq m / 1068 sq ft

Patio = 87.5 sq m / 942 sq ft

Front Patio = 19.4 sq m / 209 sq ft

Total = 206.12 sq m / 2219 sq ft



Ref :

Copyright

**BLEU
PLAN**

The Floor plan is not to scale and measurements and areas shown are approximate and therefore should be used for illustrative purposes only. The plan has been prepared in accordance with the RICS code of Measuring Practice and whilst we have confidence in the information produced it must not be relied on. Maximum lengths and widths are represented on the floor plan. If there is any aspect of particular importance, you should carry out or commission your own inspection of the property.

Copyright @ BLEUPLAN

