



Abbey Lodge

Park Road, NW8

£1,700 per week
(£7,366.67 pcm)

A spacious apartment situated on the ground floor of this well-located portered building close to Regent's Park. The property also benefits from 24 hour portage, parking served on first comes first basis and communal garden.



Abbey Lodge

Park Road, NW8

- Portered Mansion Building
- 4 Bedrooms, 3 Bathrooms
- 24 Hour Porter
- Next to Regent's Park



A spacious 4 bedroom apartment situated on the ground floor of this well-located portered building close to Regent's Park. Accommodation comprises; master bedroom with dressing room and en-suite bathroom, 3 further bedrooms, 2 further bathrooms, 2 reception rooms, fully fitted kitchen and guest WC. The property also benefits from 24 hour portorage, parking served on first comes first basis and communal garden.

Tenure: Long Let

Unfurnished

Additional tenant charges apply
 Tenancy Agreement Fee: £300
 References per Tenant/Guarantor: £60
 Inventory check (approx. £100 – £250 inc. VAT)
[chestertons.com/property-to-rent/applicable-fees](https://www.chestertons.com/property-to-rent/applicable-fees)

Energy Efficiency Rating		
	Current	Potential
Very energy efficient - lower running costs		
(92+) A		
(81-91) B		
(69-80) C		
(55-68) D		
(39-54) E	45	47
(21-38) F		
(1-20) G		
Not energy efficient - higher running costs		
England, Scotland & Wales		EU Directive 2002/91/EC

Chestertons St John's Wood Lettings

122 St John's Wood High Street

St John's Wood

London

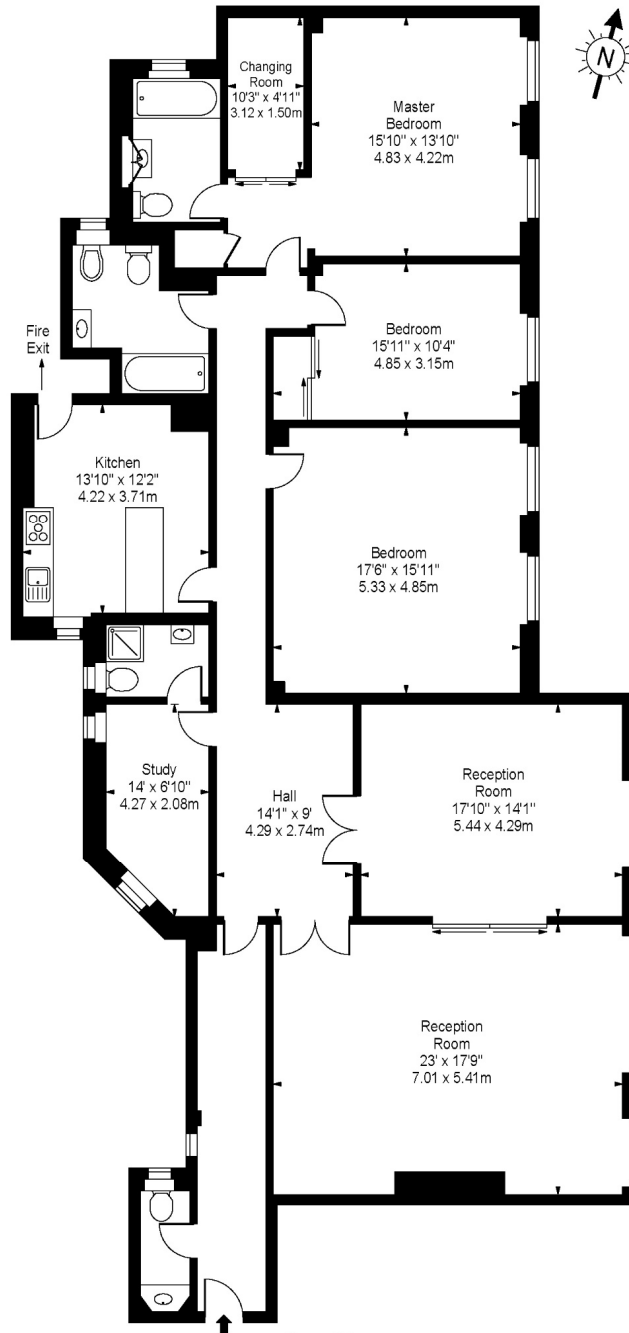
NW8 7SG

lettings.stjohnswood@chestertons.com

02030408622

[chestertons.com](https://www.chestertons.com)

**Abbey Lodge,
Park Road, NW8**



Ground Floor

Approx Gross Internal Area **2360 Sq Ft - 218.32 Sq M**

For Illustration Purposes Only - Not To Scale

www.goldlens.co.uk

Produced for Chestertons

Ref. No. 003879A