



# Park Square Mews

Marylebone, NW1

£6,283.33 per month  
(£1,450.00 per week)

A rarely available, spacious two bedroom mews house in a discreet prime location, within close proximity to Regents Park and the amenities of Marylebone Village.



# Park Square Mews

## Marylebone, NW1

- Mews House on quiet cul-de-sac
- 2 Bedrooms, 2 Bathrooms
- Contemporary, Part-Furnished
- Close to Baker Street Station





A rarely available, spacious two bedroom mews house in a discreet prime location, within close proximity to Regents Park and the amenities of Marylebone Village.

The property comprises two double bedrooms, two bathrooms, garage, and large open plan living room/kitchen.

The property is done up to a high end contemporary standard, and pets will be considered at the landlords discretion.

**Minimum Term:** 24 months  
**Deposit Required:** £7,250.00  
**Local Authority:** City Of Westminster  
**Council Tax Band:** F  
**EPC Rating:** C  
**Part Furnished**

Score	Energy rating	Current	Potential
92+	A		
81-91	B		83 B
69-80	C	69 C	
55-68	D		
39-54	E		
21-38	F		
1-20	G		

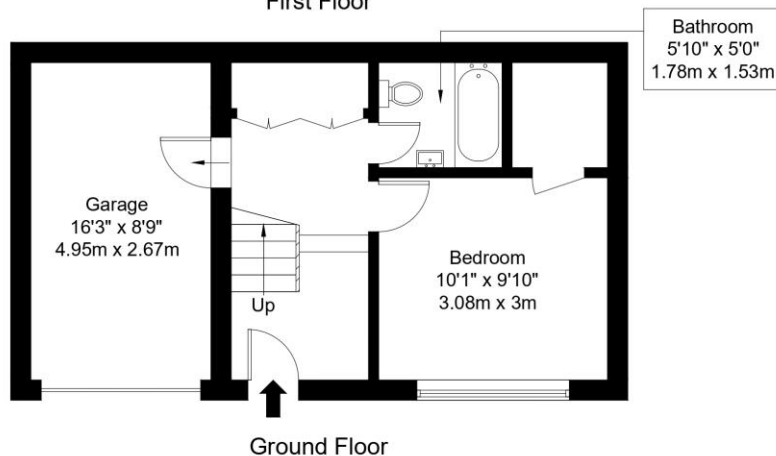
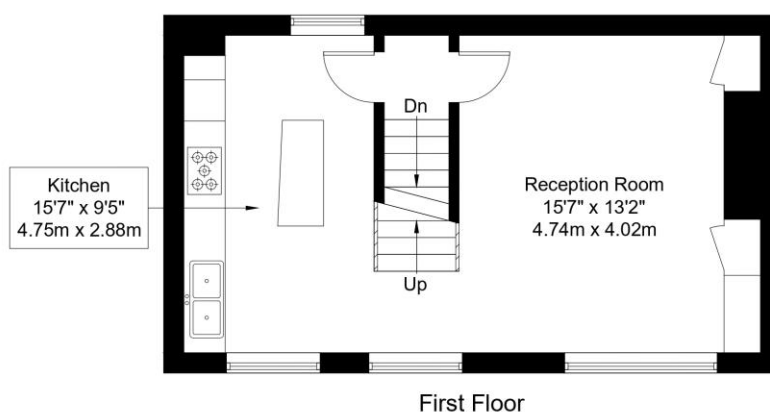
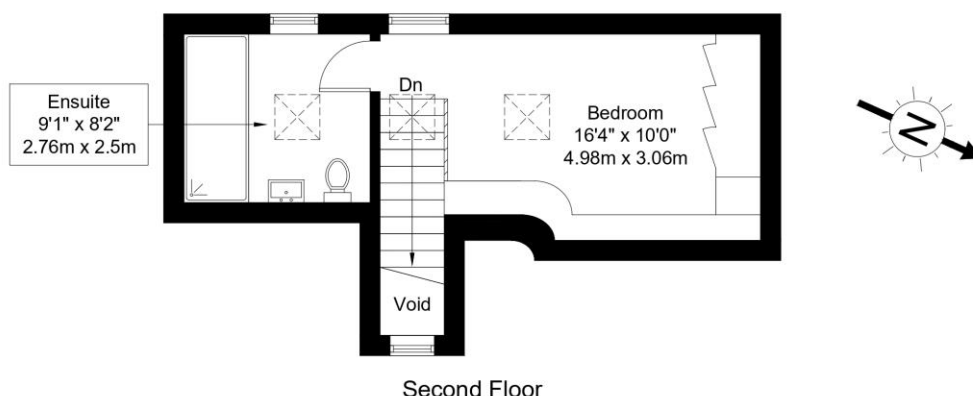
### *Chestertons St John's Wood Lettings*

105 St. John's Wood Terrace  
 London  
 NW8 6PL  
[stjohnslettingsusers@chestertons.co.uk](mailto:stjohnslettingsusers@chestertons.co.uk)  
 02030408622  
[chestertons.co.uk](http://chestertons.co.uk)

Additional tenant charges apply (fees apply to non-AST tenancies only)  
 Tenancy Agreement Fee: £300  
 References per Tenant/Guarantor: £60  
 Inventory check (approx. £100 – £250 inc. VAT)  
[chestertons.co.uk/property-to-rent/applicable-fees](http://chestertons.co.uk/property-to-rent/applicable-fees)

# Park Square Mews, NW1 4PP

Approx Gross Internal Area = 105.8 sq m / 1139 sq ft



Ref :

Copyright

**B L E U  
P L A N**

The Floor plan is not to scale and measurements and areas shown are approximate and therefore should be used for illustrative purposes only. The plan has been prepared in accordance with the RICS code of Measuring Practice and whilst we have confidence in the information produced it must not be relied on. Maximum lengths and widths are represented on the floor plan. If there is any aspect of particular importance, you should carry out or commission your own inspection of the property.  
Copyright @ BleuPlan

