



Grove Hall Court

Hall Road, NW8

£1,950 per month
(£450 per week)

A modern apartment situated in a portered mansion block within easy reach of St John's Wood High Street and with Heating & Hot Water rates being included in the rent.



Grove Hall Court

Hall Road, NW8

- 1 Bedroom, 1 Bathroom
- Modern, Lift, Porter
- Heating & Hot Water included in the rent
- Close to St. John's Wood high street



A modern one bedroom apartment situated in a portered mansion block within easy reach of St John's Wood High Street & Underground Station.

Further benefits from 24 hour portage and heating & hot water rates being included in the rent.

Minimum Term: 12 months
Deposit Required: £2,250.00
Local Authority: City Of Westminster
Council Tax Band: C
EPC Rating: C
Furnished

Energy Efficiency Rating		
	Current	Potential
Very energy efficient - lower running costs		
A (91-100)		
B (81-90)		
C (69-80)	76	78
D (55-68)		
E (39-54)		
F (21-38)		
G (1-20)		
Not energy efficient - higher running costs		
England, Scotland & Wales EU Directive 2002/91/EC		

Chestertons St John's Wood Lettings

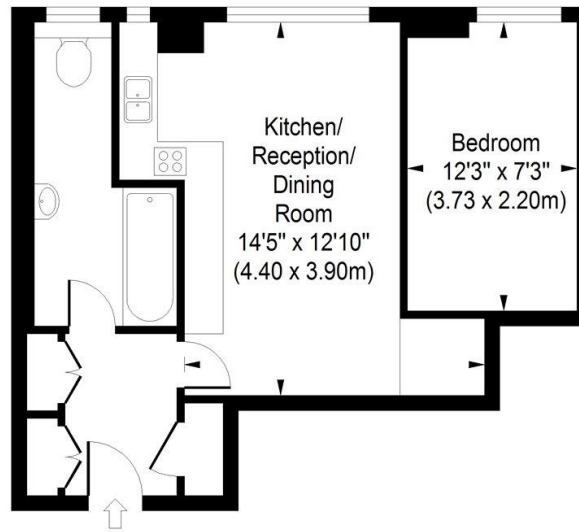
105 St. John's Wood Terrace
 London
 NW8 6PL
 stjohslettingsusers@chestertons.co.uk
 02030408622
 chestertons.co.uk

Additional tenant charges apply (fees apply to non-AST tenancies only)
 Tenancy Agreement Fee: £300
 References per Tenant/Guarantor: £60
 Inventory check (approx. £100 – £250 inc. VAT)
 chestertons.co.uk/property-to-rent/applicable-fees



Grove Hall Court, NW8

Approximate Gross Internal Area
390 sq ft / 36.27 sq m



Third Floor

ILLUSTRATION FOR IDENTIFICATION PURPOSES ONLY

ALL MEASUREMENTS ARE MAXIMUM, AND INCLUDE WINDOW BAYS AND WARDROBES WHERE APPLICABLE
THIS PLAN MUST NOT BE REPRODUCED BY ANY OTHER PERSON WITHOUT PERMISSION

