



# Charlbert Court

Eamont Street, NW8

£2,500 per month  
(£576.92 per week)

A spacious two double bedroom apartment in a secure purpose built block with communal gardens, close to the amenities of St John's Wood High Street and Regents Park.



# Charlbert Court

Eamont Street, NW8

- First Floor Flat
- 2 Bedrooms, 1 Bathroom
- Modern, Purpose Built
- Close to St John's Wood

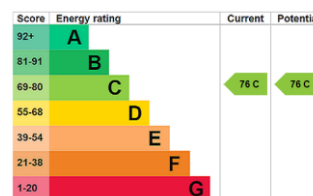




A spacious first floor apartment in a secure purpose built block with communal gardens, close to the amenities of St John's Wood High Street and Regents Park.

The property comprises two double bedrooms, one large reception room, fitted kitchen and large bathroom with full sized bath and shower over.

**Minimum Term:** 12 months  
**Deposit Required:** £2,884.62  
**Local Authority:** City Of Westminster  
**Council Tax Band:** E  
**EPC Rating:** C  
**Part Furnished**



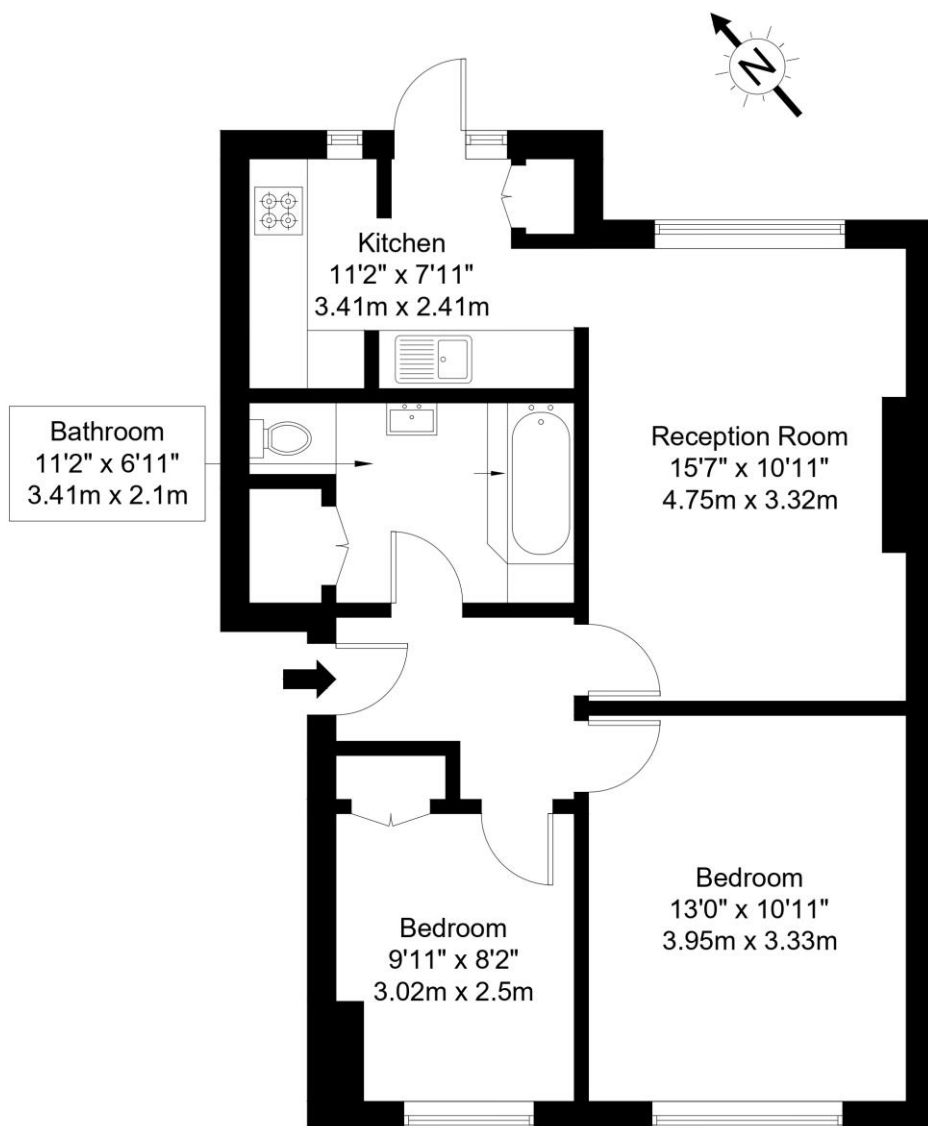
### *Chestertons St John's Wood Lettings*

105 St. John's Wood Terrace  
London  
NW8 6PL  
stjohnslettingsusers@chestertons.co.uk  
02030408622  
chestertons.co.uk

Additional tenant charges apply (fees apply to non-AST tenancies only)  
Tenancy Agreement Fee: £300  
References per Tenant/Guarantor: £60  
Inventory check (approx. £100 – £250 inc. VAT)  
chestertons.co.uk/property-to-rent/applicable-fees

# Eamont Street, NW8 7DA

Approx Gross Internal Area = 60.1 sq m / 647 sq ft



First Floor

Ref :

Copyright

**B L E U  
P L A N**

The Floor plan is not to scale and measurements and areas shown are approximate and therefore should be used for illustrative purposes only. The plan has been prepared in accordance with the RICS code of Measuring Practice and whilst we have confidence in the information produced it must not be relied on. Maximum lengths and widths are represented on the floor plan. If there is any aspect of particular importance, you should carry out or commission your own inspection of the property.  
Copyright @ BleuPlan

