

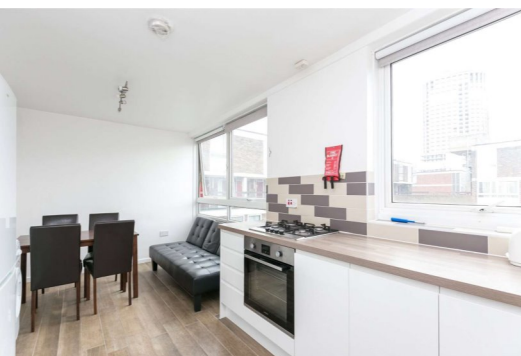


Medway House

Marylebone, NW8

£395 per week
(£1,711.67 pcm)

VIDEO VIEWING AVAILABLE A modern split-level apartment with modern kitchen and bathroom. Close to shops & transport of Marylebone and Edgware Road.



Medway House

Marylebone, NW8

- A Bright and Modern Apartment
- 3 Double Bedrooms, 1 Bathroom
- Split-Level
- Close to Shops & Transport



A bright and modern split-level apartment located in Marylebone. The property was recently refurbished throughout and benefits from modern fully fitted kitchen with open plan dining/living area, a bathroom with separate WC and 3 double bedrooms all fully furnished. The apartment is conveniently located for transport and amenities of Edgware Road and Marylebone.

Tenure: To be advised

Furnished

Additional tenant charges apply (fees apply to non-AST tenancies only)
 Tenancy Agreement Fee: £300
 References per Tenant/Guarantor: £60
 Inventory check (approx. £100 – £250 inc. VAT)
[chestertons.com/property-to-rent/applicable-fees](https://www.chestertons.com/property-to-rent/applicable-fees)

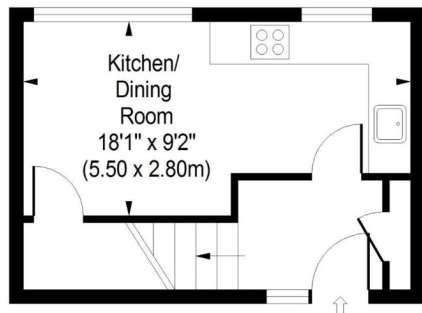
Energy Efficiency Rating		
	Current	Potential
Very energy efficient - lower running costs		
(92+) A		
(81-91) B		
(69-80) C		
(55-68) D	56	61
(39-54) E		
(21-38) F		
(1-20) G		
Not energy efficient - higher running costs		
England, Scotland & Wales		EU Directive 2002/91/EC

Chestertons St John's Wood Lettings

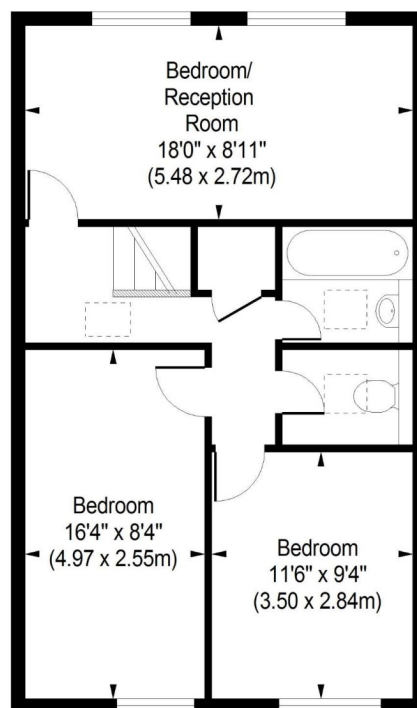
122 St John's Wood High Street
 St John's Wood
 London
 NW8 7SG
lettings.stjohnswood@chestertons.com
 02030408622
[chestertons.com](https://www.chestertons.com)

Medway House

Approximate Gross Internal Area
790 sq ft / 73.43 sq m



Second Floor



Third Floor

ILLUSTRATION FOR IDENTIFICATION PURPOSES ONLY

ALL MEASUREMENTS ARE MAXIMUM, AND INCLUDE WINDOW BAYS AND WARDROBES WHERE APPLICABLE
THIS PLAN MUST NOT BE REPRODUCED BY ANY OTHER PERSON WITHOUT PERMISSION

