



Abercorn Place

St. John's Wood, NW8

£2,850 per month
(£657.69 per week)

A spacious apartment located on the second floor in a period conversion in the heart of St. John's Wood, within close proximity of the High Street and the Underground Station

CHESTERTONS



Abercorn Place

St. John's Wood, NW8

- A Spacious Apartment in a Period Conversion
- 2 Bedrooms, 2 Bathrooms
- Wood Flooring
- Moments From St. John's Wood High Street



This charming apartment comprises two double bedrooms, two bathrooms (one en-suite), large reception area and separate fully equipped kitchen.

The property is located moments from the amenities on St. John's Wood High Street, St. John's Wood Underground (Jubilee Line) and Maida Vale Underground (Bakerloo Line)

Minimum Term: 6 months
Deposit Required: £3,288.46
Local Authority: Westminster
Council Tax Band: C
EPC Rating: C
Furnished, Part Furnished, Unfurnished

Energy Efficiency Rating		
	Current	Potential
Very energy efficient - lower running costs		
A (94-100)		
B (81-93)		
C (69-80)	72	73
D (55-68)		
E (39-54)		
F (21-38)		
G (1-20)		
Not energy efficient - higher running costs		
England, Scotland & Wales EU Directive 2002/91/EC		

Chestertons St John's Wood Lettings

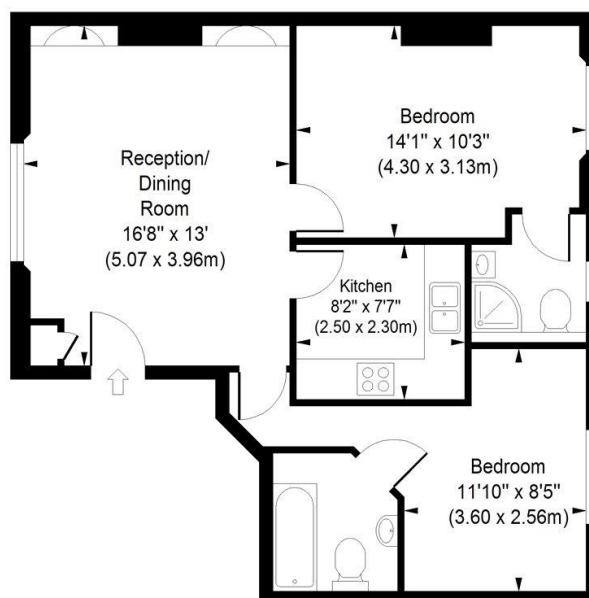
105 St. John's Wood Terrace
 London
 NW8 6PL
 stjohslettingsusers@chestertons.co.uk
 02030408622
 chestertons.co.uk

Additional tenant charges apply (fees apply to non-AST tenancies only)
 Tenancy Agreement Fee: £300
 References per Tenant/Guarantor: £60
 Inventory check (approx. £100 – £250 inc. VAT)
 chestertons.co.uk/property-to-rent/applicable-fees

Abercorn Place

Approximate Gross Internal Area

621 sq ft / 57.69 sq m



Second Floor

ILLUSTRATION FOR IDENTIFICATION PURPOSES ONLY

ALL MEASUREMENTS ARE MAXIMUM, AND INCLUDE WINDOW BAYS AND WARDROBES WHERE APPLICABLE
THIS PLAN MUST NOT BE REPRODUCED BY ANY OTHER PERSON WITHOUT PERMISSION

