

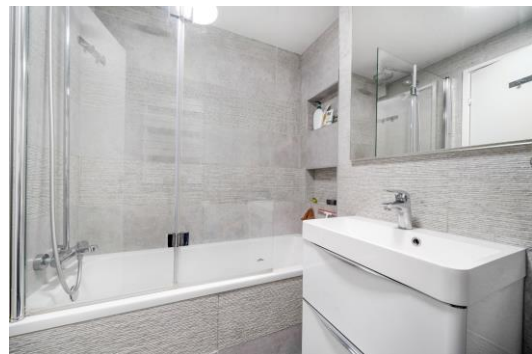


Portman Gate

110 Lisson Grove, NW1

£6,000 per month
(£1,384.62 per week)

****SHORT LET**** A bright and spacious modern apartment in gated portered development with parking, gym & swimming pool. Located moments away from Marylebone tube station (Bakerloo Line) and easy links to central London.



Portman Gate

110 Lisson Grove, NW1

- Spacious Apartment in Secure Portered Development
- 2 Bedroom, 2 Bathroom
- Underground Parking, Gym, Sauna, Swimming Pool
- Minutes Walk from Marylebone Station



****SHORT LET**** A spacious two bedroom apartment set in a secure portered development with 24 hour security, with Gym, Sauna, Swimming Pool, and underground parking.

The property comprises; spacious reception room with open plan eat-in kitchen, double bedroom with fitted wardrobes, second double bedroom and two bathrooms.

he property further benefits from a central location and parking space.

Minimum Term: 2 months
Deposit Required: £5,538.46
Local Authority: City Of Westminster
Council Tax Band: E
EPC Rating: B
Furnished

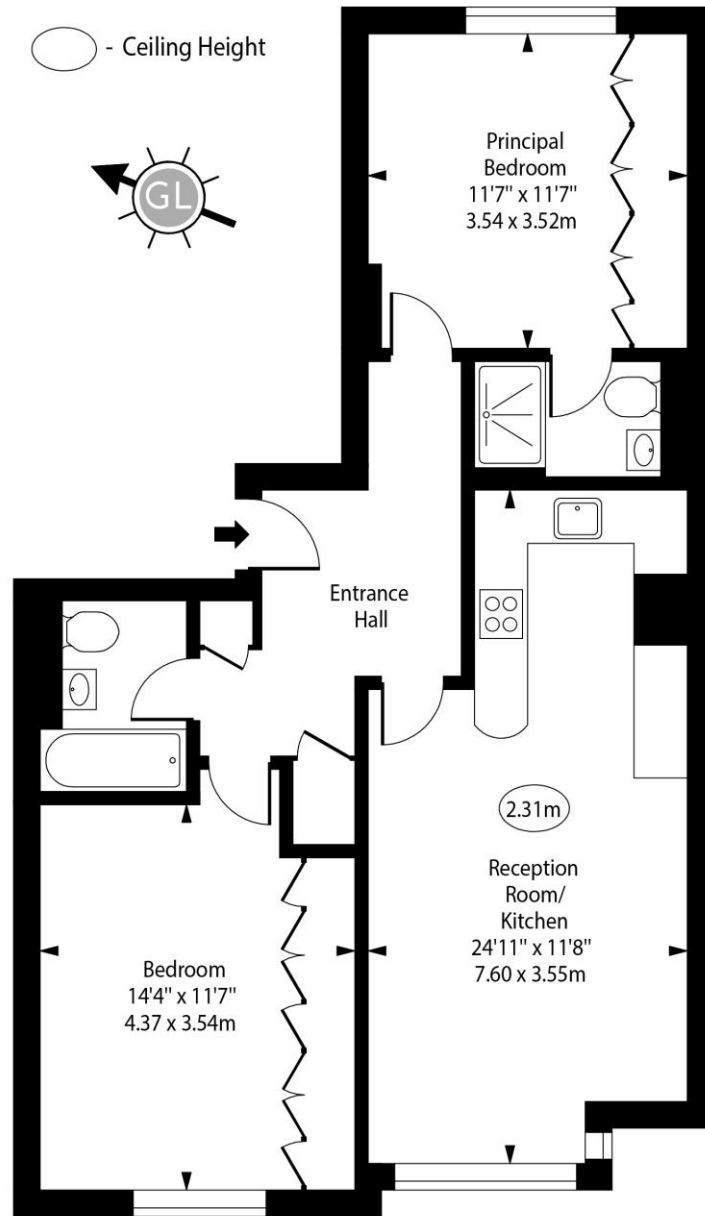
Energy Efficiency Rating		
	Current	Potential
Very energy efficient - lower running costs		
A (94-100)		
B (81-93)	84	84
C (69-80)		
D (55-68)		
E (39-54)		
F (21-38)		
G (1-20)		
Not energy efficient - higher running costs		
England, Scotland & Wales EU Directive 2002/91/EC		

Chestertons St John's Wood Lettings

105 St. John's Wood Terrace
 London
 NW8 6PL
stjohnslettingsusers@chestertons.co.uk
 02030408622
chestertons.co.uk

Additional tenant charges apply (fees apply to non-AST tenancies only)
 Tenancy Agreement Fee: £300
 References per Tenant/Guarantor: £60
 Inventory check (approx. £100 – £250 inc. VAT)
chestertons.co.uk/property-to-rent/applicable-fees

Portman Gate,
Lisson Grove, NW1



Fourth Floor

Approx Gross Internal Area 756 Sq Ft - 70.23 Sq M

For Illustration Purposes Only - Not To Scale

www.goldlens.co.uk

Produced for Chestertons

Ref. No. 022242J

