



Addison House

Grove End Road, NW8

£3,000 per month
(£692.31 per week)

*** VIDEO VIEWING AVAILABLE *** A gorgeous and bright apartment in central St John's Wood, moments away from the underground station and the shops and cafes of the high street.

CHESTERTONS



Addison House

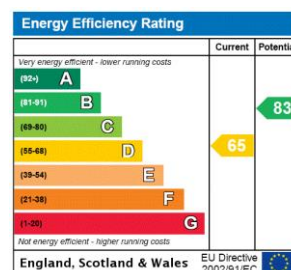
Grove End Road, NW8

- A Modern Apartment in Portered Mansion Building
- 2 Bedrooms, 1 Bathrooms
- Communal Gardens, Portorage
- Close to St John's Wood Underground Station & High Street



A 2 double bedroom modernised property set on the 3rd floor (with lift) of a portered red brick mansion block in a central St John's Wood location. The property comprises of; 2 double bedrooms with fitted wardrobes, modern bathroom, spacious reception room with luxurious open plan kitchen. The property benefits from a communal garden and portage.

Minimum Term: months
Deposit Required: £3,461.54
Local Authority:
Council Tax Band:
EPC Rating: D
Furnished, Part Furnished



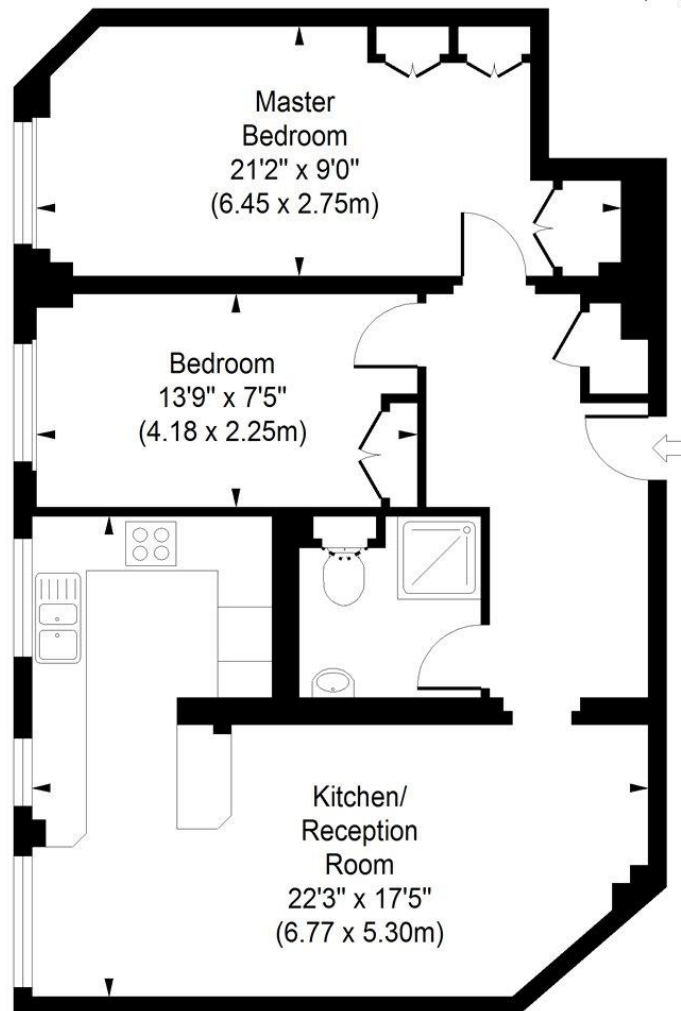
Chestertons St John's Wood Lettings

122 St John's Wood High Street
 St John's Wood
 London
 NW8 7SG
lettings.stjohnswood@chestertons.co.uk
 02030408622
chestertons.co.uk

Additional tenant charges apply (fees apply to non-AST tenancies only)
 Tenancy Agreement Fee: £300
 References per Tenant/Guarantor: £60
 Inventory check (approx. £100 – £250 inc. VAT)
chestertons.co.uk/property-to-rent/applicable-fees

Addison House, NW8

Approximate Gross Internal Area
735 sq ft / 68.28 sq m



Third Floor

ILLUSTRATION FOR IDENTIFICATION PURPOSES ONLY

ALL MEASUREMENTS ARE MAXIMUM, AND INCLUDE WINDOW BAYS AND WARDROBES WHERE APPLICABLE
THIS PLAN MUST NOT BE REPRODUCED BY ANY OTHER PERSON WITHOUT PERMISSION

