



Elsworthy Rise

Primrose Hill, NW3

£20,000 per month
(£4,615.38 per week)

A stunning five bedroom house set over three floors within a private gated cul-de-sac just moments from the famous Primrose Hill.



Elsworthy Rise

Primrose Hill, NW3

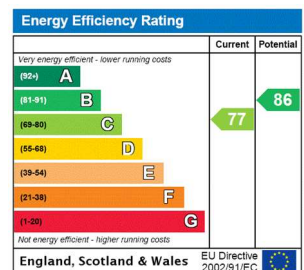
- Family Home Set Over 3 Floors
- 5 Bedrooms, 4 Bathrooms
- Modern, Patio and Terrace
- Close to Primrose Hill



This exquisite five-bedroom house, spread across three floors, is nestled within a private gated cul-de-sac, just moments from the iconic Primrose Hill.

The property boasts an impressive open-plan living space on the ground floor, featuring a state-of-the-art kitchen with Gaggenau appliances, an inbuilt teppanyaki grill, and a bar area. The entire home benefits from underfloor heating, timber flooring, and intelligent lighting. The first and second floors offer five bedrooms, each equipped with air conditioning, four high-spec bathrooms, and a study area with access to the terrace.

Minimum Term: 5 months
Deposit Required: £27,692.31
Local Authority: Westminster
Council Tax Band: G
EPC Rating: C
Furnished, Part Furnished, Unfurnished



Chestertons St John's Wood Lettings

105 St. John's Wood Terrace
 London
 NW8 6PL
 stjohswood@chestertons.co.uk
 02030408622
 chestertons.co.uk

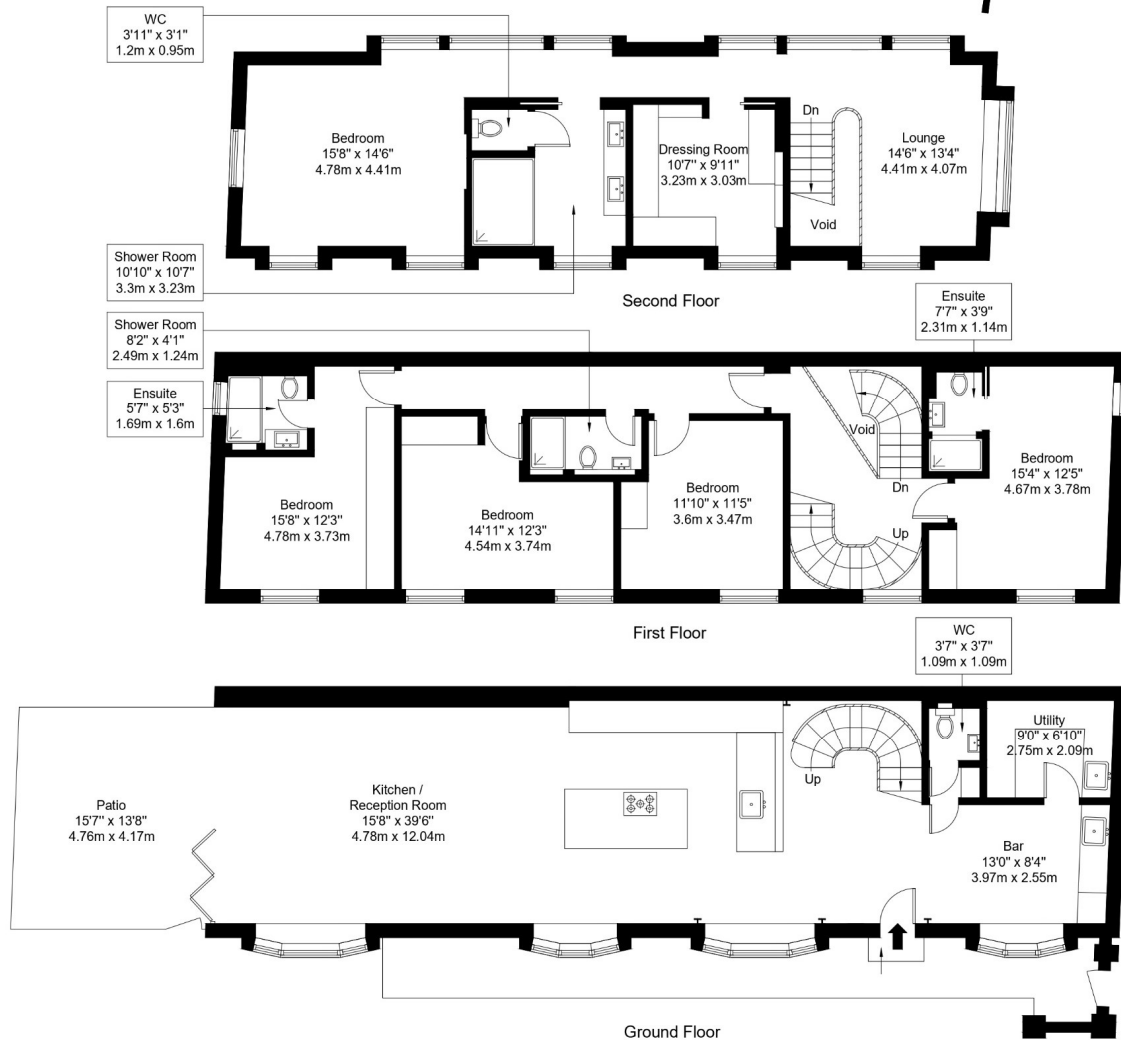
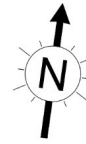
Additional tenant charges apply (fees apply to non-AST tenancies only)
 Tenancy Agreement Fee: £300
 References per Tenant/Guarantor: £60
 Inventory check (approx. £100 – £250 inc. VAT)
chestertons.co.uk/property-to-rent/applicable-fees

Elsworthy Rise, NW3 3SH

Approx Gross Internal Area = 250.1 sq m / 2692 sq ft

Patio = 19.8 sq m / 213 sq ft

Total = 269.9 sq m / 2905 sq ft



Ref :

Copyright **BLEU PLAN**

The Floor plan is not to scale and measurements and areas shown are approximate and therefore should be used for illustrative purposes only. The plan has been prepared in accordance with the RICS code of Measuring Practice and whilst we have confidence in the information produced it must not be relied on. Maximum lengths and widths are represented on the floor plan. If there is any aspect of particular importance, you should carry out or commission your own inspection of the property.

Copyright @ BLEUPLAN

