



Charles Lane

St John's Wood, NW8

£4,500 per month
(£1,038.46 per week)

An absolutely stunning and unique apartment set privately behind gates on a quiet cobbled street, just off of St John's Wood High Street. Only available for 10 months let and all bills inclusive.



Charles Lane

St John's Wood, NW8

- An Interior Designed Apartment
- 2 Bedrooms, 2 Bathrooms, Kitchen, Reception
- Under Floor Heating in Bathrooms
- Moments Away From Regent's Park and St John's Wood High Street



An absolutely stunning, interior designed, two bedroom two bathroom apartment set privately behind gates on a quiet cobbled street, off of St John's Wood High Street.

The apartment has been luxuriously appointed and newly finished to a high specification throughout. Features include walnut wood flooring and under floor heating in bathrooms.

The property is conveniently located for St John's Wood High Street as well as Regent's Park.

The property further benefits from all bills included in the rent

Minimum Term: 10 months
Deposit Required: £6,230.77
Local Authority: City of Westminster
Council Tax Band: F
EPC Rating: B
Furnished

Energy Efficiency Rating		Current	Potential
Very energy efficient - lower running costs	A		
(91-101)	B	83	83
(81-90)	C		
(69-80)	D		
(55-68)	E		
(39-54)	F		
(21-38)	G		
Not energy efficient - higher running costs			
England, Scotland & Wales		EU Directive 2002/91/EC	

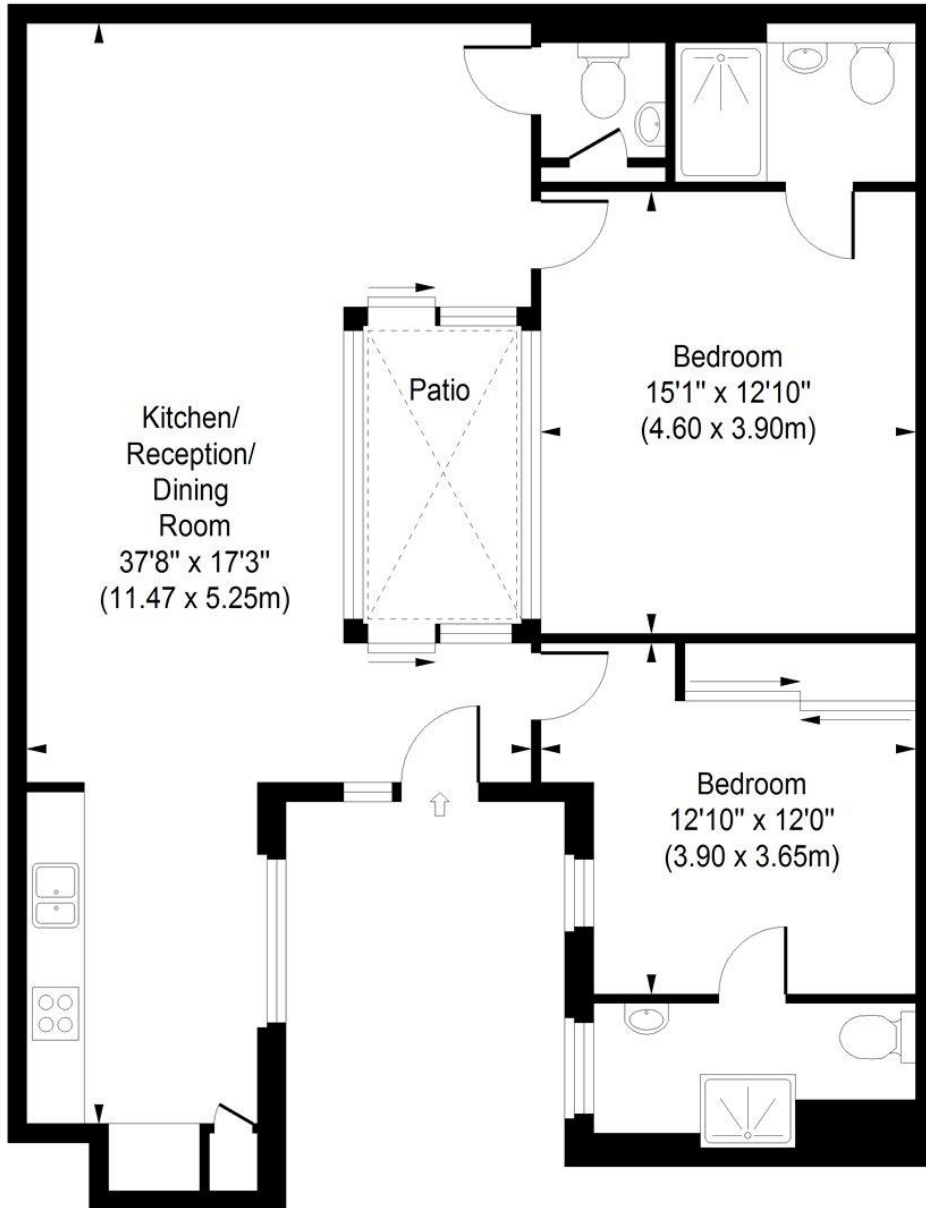
Chestertons St John's Wood Lettings

105 St. John's Wood Terrace
 London
 NW8 6PL
 stjohswood@chestertons.co.uk
 02030408622
 chestertons.co.uk

Additional tenant charges apply (fees apply to non-AST tenancies only)
 Tenancy Agreement Fee: £300
 References per Tenant/Guarantor: £60
 Inventory check (approx. £100 – £250 inc. VAT)
 chestertons.co.uk/property-to-rent/applicable-fees

Charles Lane

Approximate Gross Internal Area
943 sq ft / 87.63 sq m



Ground Floor

ILLUSTRATION FOR IDENTIFICATION PURPOSES ONLY

ALL MEASUREMENTS ARE MAXIMUM, AND INCLUDE WINDOW BAYS AND WARDROBES WHERE APPLICABLE
THIS PLAN MUST NOT BE REPRODUCED BY ANY OTHER PERSON WITHOUT PERMISSION

