



Eyre Court

3-21 Finchley Road, NW8

£3,500 per month
(£807.69 per week)

A bright apartment located on the sixth floor (lift access) in a purpose built portered block moments from St. John's Wood Underground.



Eyre Court

3-21 Finchley Road, NW8

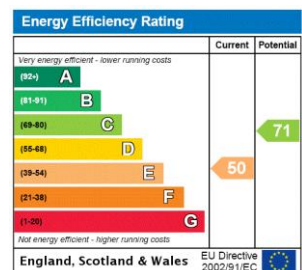
- A Bright Apartment in a Purpose Built Block
- 2 Bedrooms, 1 Bathrooms
- Porter, Heating & Hot Water Included in Rent, Lift Access
- Opposite St John's Wood Underground



This bright apartment comprises of 2 double bedroom with fitted in wardrobes, 1 bathroom, separate fully equipped kitchen, large reception room and plenty of storage.

The property is located moments from the amenities on St. John's Wood High Street and St. John's Wood Underground (Jubilee Line).

Minimum Term: 12 months
Deposit Required: £4,038.46
Local Authority: City of Westminster
Council Tax Band: F
EPC Rating: E
Furnished, Part Furnished



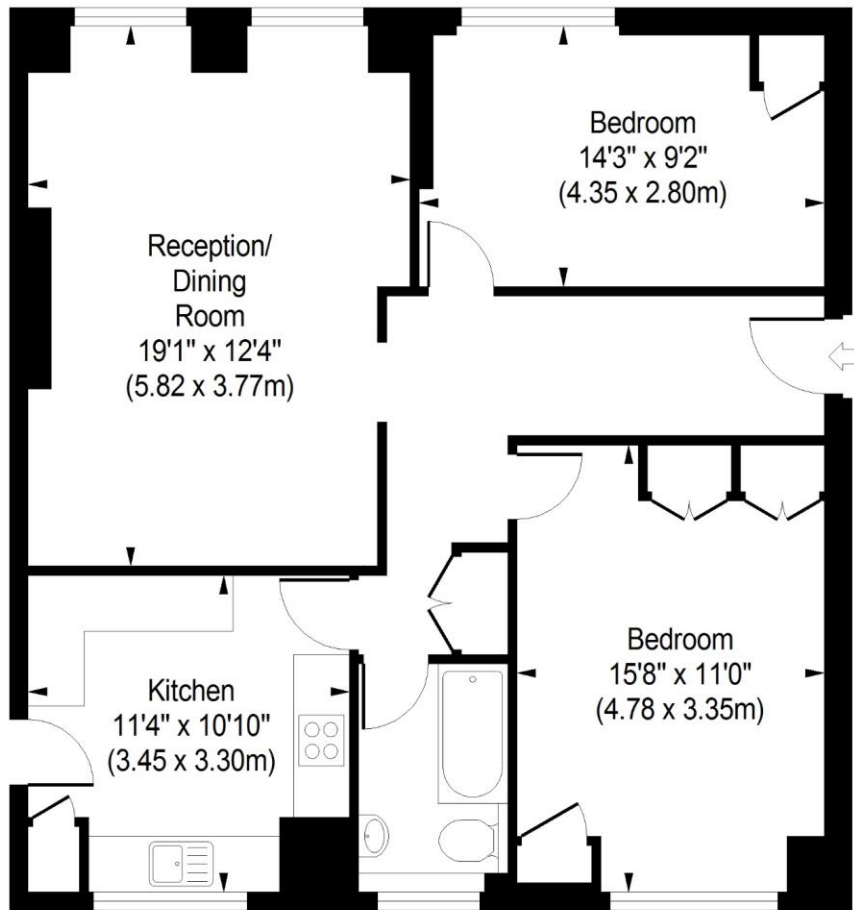
Chestertons St John's Wood Lettings

105 St. John's Wood Terrace
 London
 NW8 6PL
 stjohswood@chestertons.co.uk
 02030408622
 chestertons.co.uk

Additional tenant charges apply (fees apply to non-AST tenancies only)
 Tenancy Agreement Fee: £300
 References per Tenant/Guarantor: £60
 Inventory check (approx. £100 – £250 inc. VAT)
 chestertons.co.uk/property-to-rent/applicable-fees

Eyre Court, NW8

Approximate Gross Internal Area
835 sq ft / 77.55 sq m



Sixth Floor

ILLUSTRATION FOR IDENTIFICATION PURPOSES ONLY

ALL MEASUREMENTS ARE MAXIMUM, AND INCLUDE WINDOW BAYS AND WARDROBES WHERE APPLICABLE
THIS PLAN MUST NOT BE REPRODUCED BY ANY OTHER PERSON WITHOUT PERMISSION

