



Buttermere Court

Boundary Road, NW8

£3,250 per month
(£750 per week)

A modern apartment with private balcony set in a portered building in St John's Wood, close to transport and amenities.

CHESTERTONS



Buttermere Court

Boundary Road, NW8

- A Modern Apartment With Stunning Views
- 2 Bedrooms, 2 Bathrooms
- Balcony, Porter
- Central St John's Wood Location

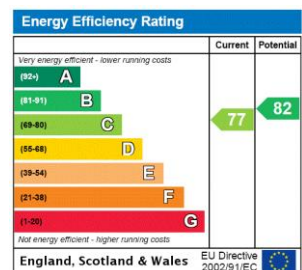


A modern apartment set on the 7th floor (with lift) of a well located portered building.

The property consists of two double bedrooms, double aspect reception room with balcony, open plan modern kitchen and two bathrooms.

The property further benefits from being just a short walk away from the amenities of St John's Wood & Swiss Cottage high streets and underground stations.

Minimum Term: 6 months
Deposit Required: £3,750.00
Local Authority:
Council Tax Band: F
EPC Rating: C
Furnished, Part Furnished, Unfurnished



Chestertons St John's Wood Lettings

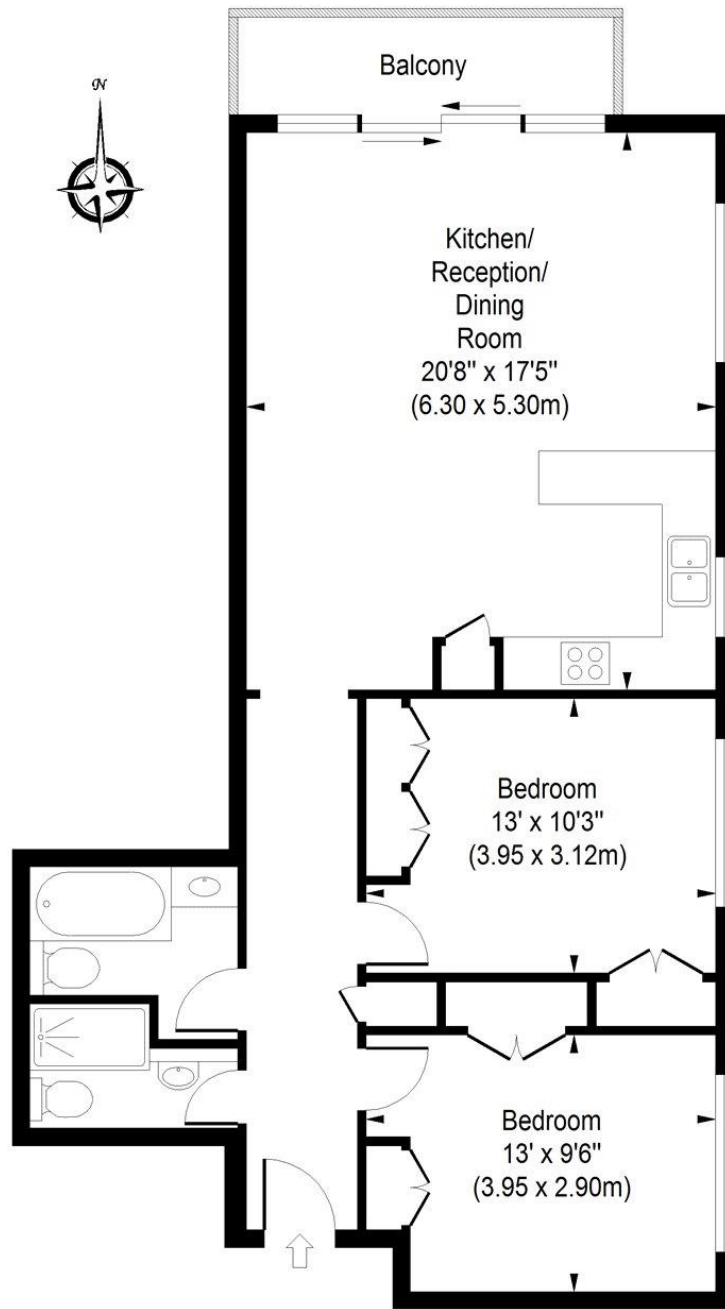
122 St John's Wood High Street
 St John's Wood
 London
 NW8 7SG
 lettings.stjohnswood@chestertons.com
 02030408622
 chestertons.com

Additional tenant charges apply (fees apply to non-AST tenancies only)
 Tenancy Agreement Fee: £300
 References per Tenant/Guarantor: £60
 Inventory check (approx. £100 – £250 inc. VAT)
 chestertons.com/property-to-rent/applicable-fees

Buttermere Court

Approximate Gross Internal Area

811 sq ft / 75.36 sq m



Tenth Floor

ILLUSTRATION FOR IDENTIFICATION PURPOSES ONLY

ALL MEASUREMENTS ARE MAXIMUM, AND INCLUDE WINDOW BAYS AND WARDROBES WHERE APPLICABLE
THIS PLAN MUST NOT BE REPRODUCED BY ANY OTHER PERSON WITHOUT PERMISSION

