



Cornwall Terrace Mews

Marylebone, NW1

£6,000 per month
(£1,384.62 per week)

A bright apartment located on the second floor (walk-up) split over two floors down a private gated mews moments from Baker Street Underground Station.



Cornwall Terrace Mews

Marylebone, NW1

- A Bright Apartment Down a Private Gated Mews
- 3 Bedroom, 2 Bathroom
- Private Outside Patio, Split Over 2 Floors
- Moments from Baker Street Underground Station

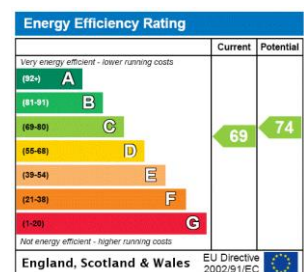


A spacious and bright split level apartment situated down a private mews, within close proximity to Regents Park, the amenities of Marylebone Village and Baker Street Station.

The property comprises three double bedrooms, large double reception room, study, fitted kitchen, two bathrooms (one en-suite), WC and a further study.

Additional benefits include secure entry phone system and private roof terrace.

Minimum Term: 12 months
Deposit Required: £6,923.08
Local Authority: City of Westminster
Council Tax Band: H
EPC Rating: C
Unfurnished



Chestertons St John's Wood Lettings

105 St. John's Wood Terrace
 London
 NW8 6PL
 stjohswood@chestertons.co.uk
 02030408622
 chestertons.co.uk

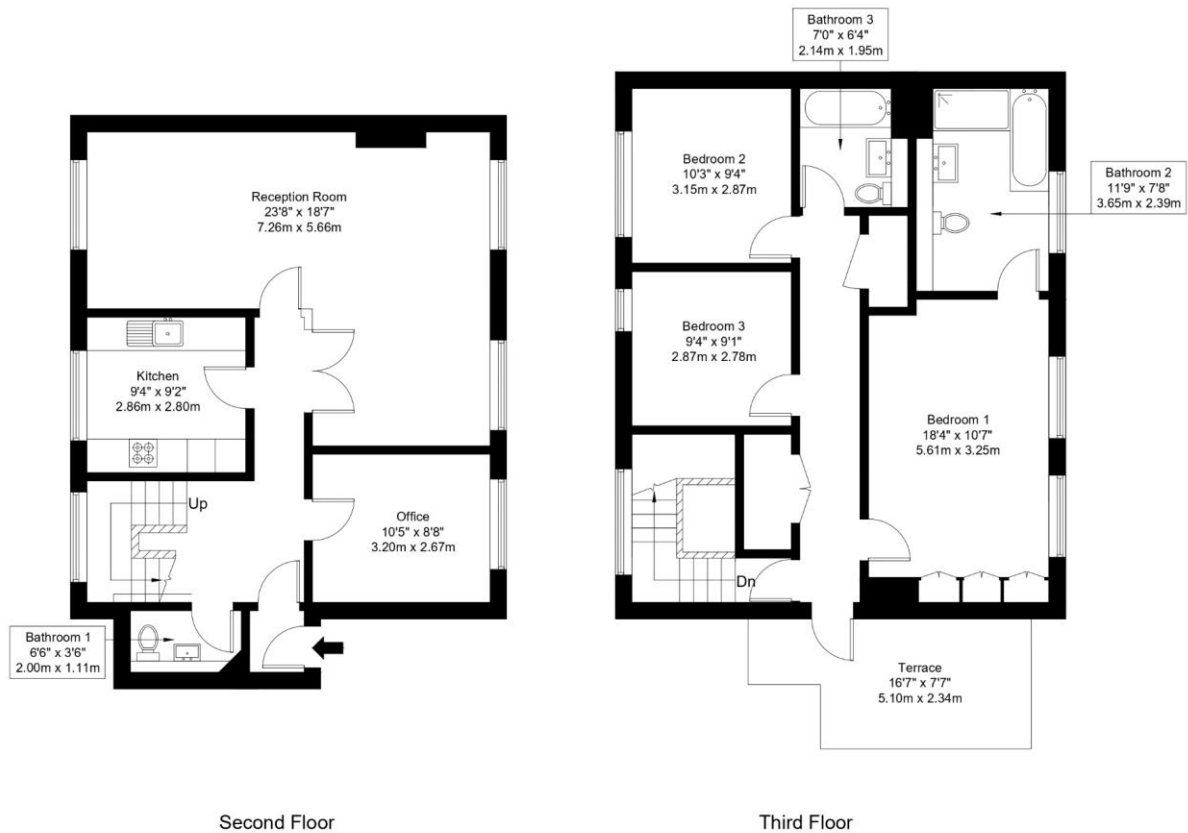
Additional tenant charges apply (fees apply to non-AST tenancies only)
 Tenancy Agreement Fee: £300
 References per Tenant/Guarantor: £60
 Inventory check (approx. £100 – £250 inc. VAT)
 chestertons.co.uk/property-to-rent/applicable-fees

Cornwall Terrace, NW1 5LL

Approx Gross Internal Area = 135.05 sq m / 1453 sq ft

Terrace Area = 10.43 sq m / 112 sq ft

Total Area = 145.48 sq m / 1565 sq ft



Second Floor

Third Floor

Ref :

Copyright **BLEU
PLAN**

The Floor plan is not to scale and measurements and areas shown are approximate and therefore should be used for illustrative purposes only. The plan has been prepared in accordance with the RICS code of Measuring Practice and whilst we have confidence in the information produced it must not be relied on. If there is any aspect of particular importance, you should carry out or commission your own inspection of the property.

Copyright @ BLEUPLAN

