

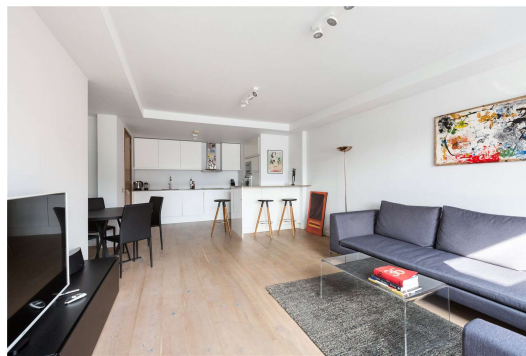
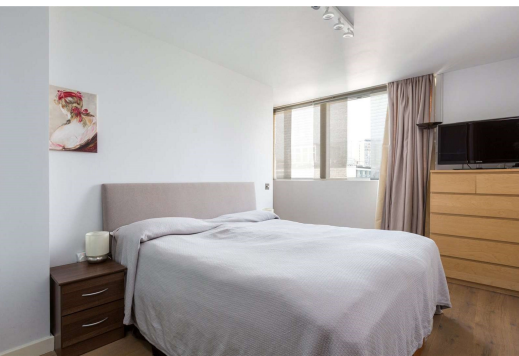


Bell Street

London, NW1

£3,500 per month
(£807.69 per week)

A modern and spacious third floor apartment in a well maintained ported block with lift access to all floors. Close proximity to Marylebone Stations.



Bell Street

London, NW1

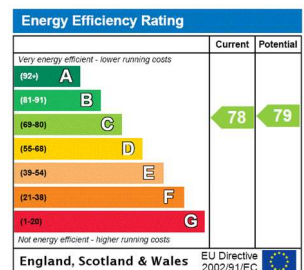
- Modern and Spacious Third Floor Apartment
- 2 Bedrooms, 2 Bathrooms
- Balcony, Lift, Porter
- Close to Marylebone Stations and Edgware Road



A modern and spacious third floor apartment in a well maintained ported block with lift access to all floors. Close proximity to Marylebone Stations.

The property comprises two double bedrooms with large wardrobes, one bathroom and an en-suite, and a open plan reception room/kitchen with access to a private balcony.

Minimum Term: 6 months
Deposit Required: £4,038.46
Local Authority: City of Westminster
Council Tax Band: H
EPC Rating: C
Furnished, Part Furnished, Unfurnished



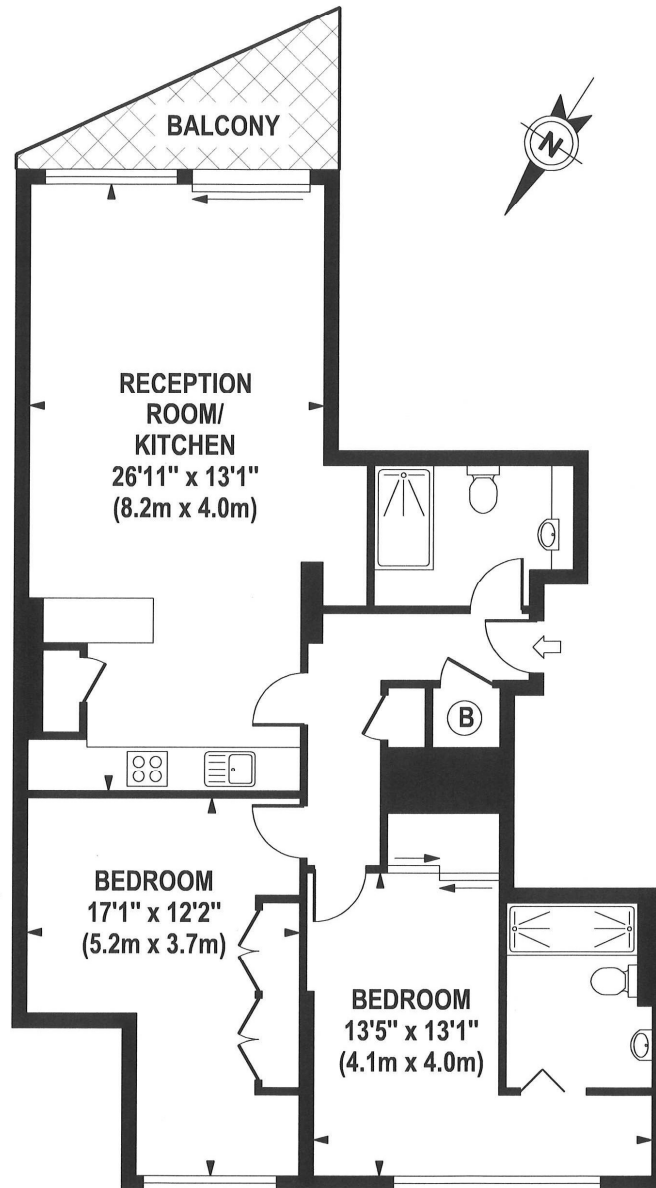
Chestertons St John's Wood Lettings

105 St. John's Wood Terrace
 London
 NW8 6PL
 stjohswood@chestertons.co.uk
 02030408622
 chestertons.co.uk

Additional tenant charges apply (fees apply to non-AST tenancies only)
 Tenancy Agreement Fee: £300
 References per Tenant/Guarantor: £60
 Inventory check (approx. £100 – £250 inc. VAT)
 chestertons.co.uk/property-to-rent/applicable-fees

BELL STREET

Approximate Gross Internal Area 895 sq ft / 83.1 sq m



**THIRD FLOOR
GROSS INTERNAL
FLOOR AREA 895 SQ FT**

Although every attempt has been made to ensure accuracy, all measurements are approximate. The floor plan's for illustrative purposes only and not to scale. Measured in accordance to RICS standards.

DE-PHOTOGRAPHY.NET

