



# Chagford Street

London, NW1

£19,500 per month

**\*\*SHORT LET\*\*** A four bedroom, four bathroom family home set in the heart of Marylebone with outside space, cinema room and integrated garage.



# Chagford Street

London, NW1

- Terraced House
- 4 Bedrooms, 4 Bathrooms
- 2 Reception Rooms, Outside Space, Cinema
- Close to the Amenities of Baker Street

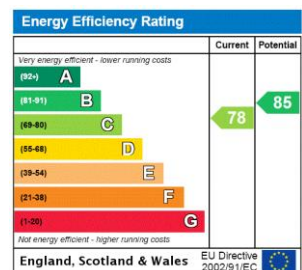


**\*\*SHORT LET\*\*** A modern terraced house set conveniently in the heart of Marylebone, within close proximity to the amenities of Baker Street including the Underground Station, Regents Park and Marylebone High Street.

The property comprises four double bedrooms, four bathrooms, an open plan kitchen/reception leading to a private terrace, an upper reception with another terrace, cinema room, utility room and integrated garage.

Additional benefits include service lift, double glazing.

**Minimum Term:** 1 months  
**Deposit Required:** £18,000.00  
**Local Authority:**  
**Council Tax Band:** H  
**EPC Rating:** C  
**Furnished, Part Furnished**



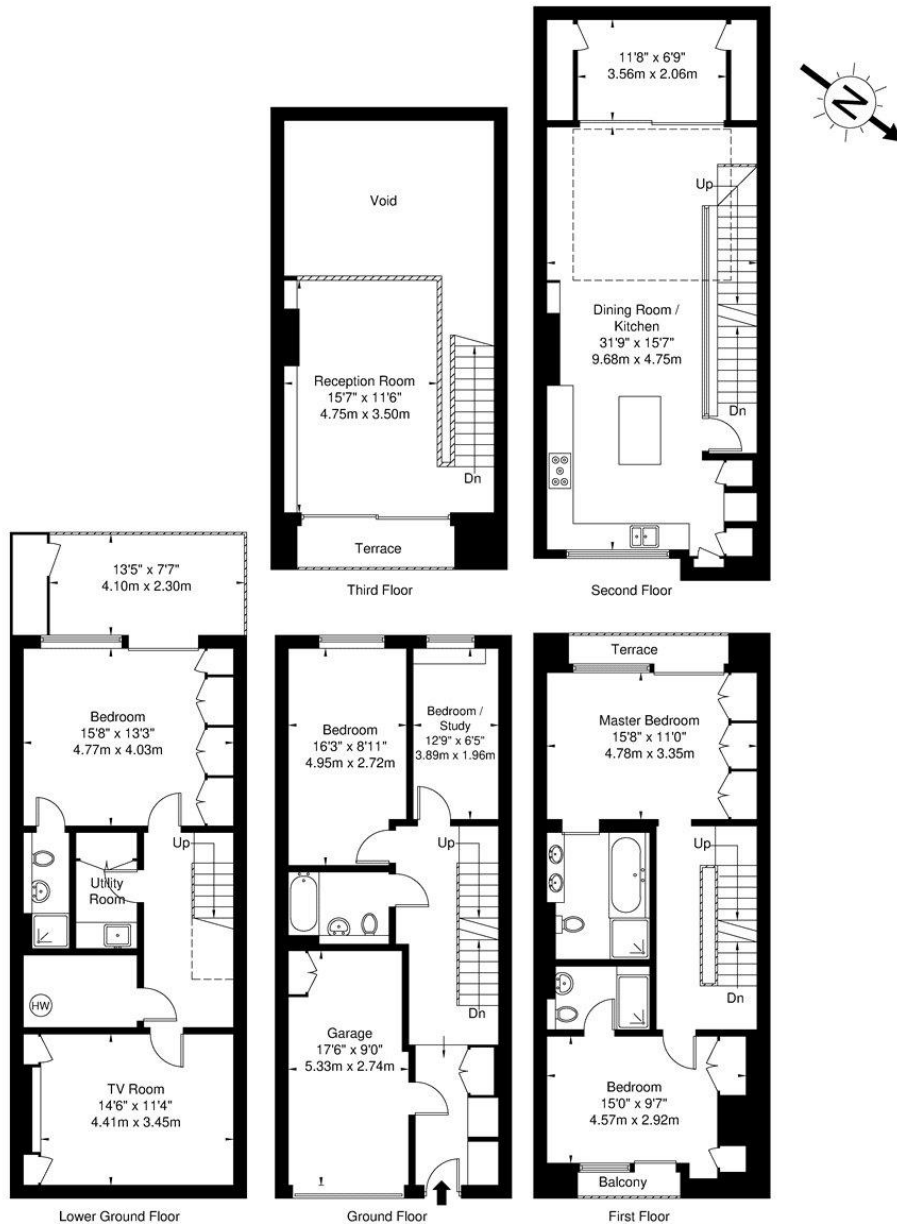
### Chestertons St John's Wood Lettings

105 St. John's Wood Terrace  
 London  
 NW8 6PL  
 stjohswood@chestertons.co.uk  
 02030408622  
 chestertons.co.uk

Additional tenant charges apply (fees apply to non-AST tenancies only)  
 Tenancy Agreement Fee: £300  
 References per Tenant/Guarantor: £60  
 Inventory check (approx. £100 – £250 inc. VAT)  
 chestertons.co.uk/property-to-rent/applicable-fees

# Chagford Street, NW1 6EB

Approx. Gross Internal Area = 280.5 sq m / 3019 sq ft



Ref

Copyright

**BLEU  
PLAN**

The Floor plan is not to scale and measurements and areas shown are approximate and therefore should be used for illustrative purposes only. The plan has been prepared in accordance with the RICS code of Measuring Practice and whilst we have confidence in the information produced it must not be relied on. If there is any aspect of particular importance, you should carry out or commission your own inspection of the property.

Copyright © BLEUPLAN

