



# Eyre Court

3-21 Finchley Road, NW8

£5,450 per month  
(£1,257.69 per week)

A modern and spacious apartment set in a portered building opposite St John's Wood Underground Station, with heating and hot water included in rent.

CHESTERTONS



# Eyre Court

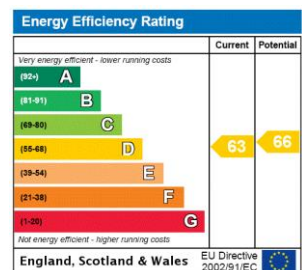
3-21 Finchley Road, NW8

- Spacious Modern Apartment in Portered Block
- 3 Bedrooms, 3 Bathrooms
- Porter
- Central St John's Wood Location



This apartment is set on the ground floor of a sought-after portered mansion block in the centre of St John's Wood, opposite the underground station and just around the corner from the High Street. The property comprises; 3 double bedrooms, 3 modern bathrooms, spacious double reception with wood floors, and a luxury eat-in kitchen. The location is excellent for local schools, especially the American School, and further benefits from portage and communal heating & hot water.

**Minimum Term:** 6 months  
**Deposit Required:** £7,546.15  
**Local Authority:** Westminster  
**Council Tax Band:** G  
**EPC Rating:** C  
**Unfurnished**

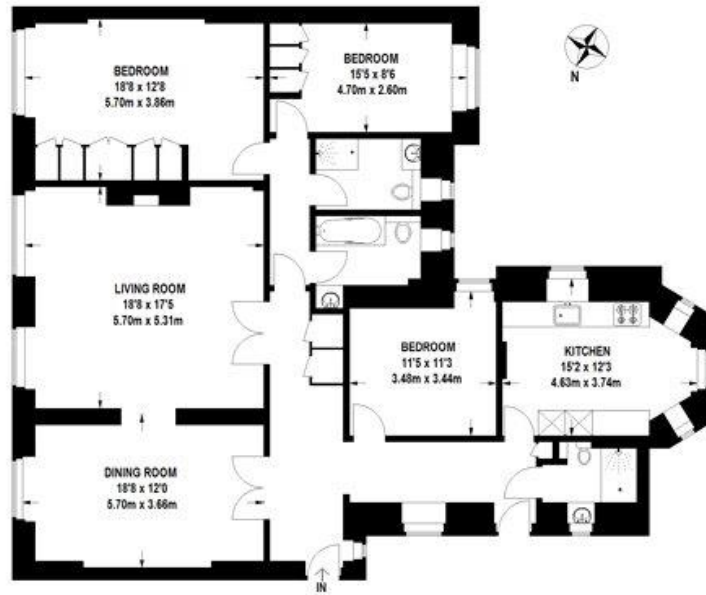


### Chestertons St John's Wood Lettings

105 St. John's Wood Terrace  
 London  
 NW8 6PL  
 stjohswood@chestertons.co.uk  
 02030408622  
 chestertons.co.uk

Additional tenant charges apply (fees apply to non-AST tenancies only)  
 Tenancy Agreement Fee: £300  
 References per Tenant/Guarantor: £60  
 Inventory check (approx. £100 – £250 inc. VAT)  
 chestertons.co.uk/property-to-rent/applicable-fees

## EYRE COURT, NW8



### GROUND FLOOR

**APPROXIMATE GROSS INTERNAL FLOOR AREA 1733 SQ FT / 161 SQ M**

This floor plan is for identification purposes only, and is not to scale.  
Please check all dimensions, shapes and compass bearings before making any decisions reliant upon them.  
This plan must not be reproduced by any other person without permission.

©2014 [www.mattdavisphoto.co.uk](http://www.mattdavisphoto.co.uk)

