

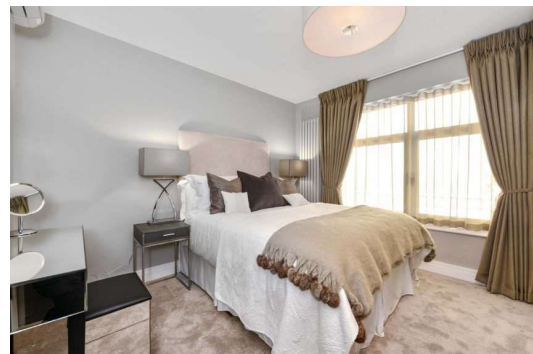
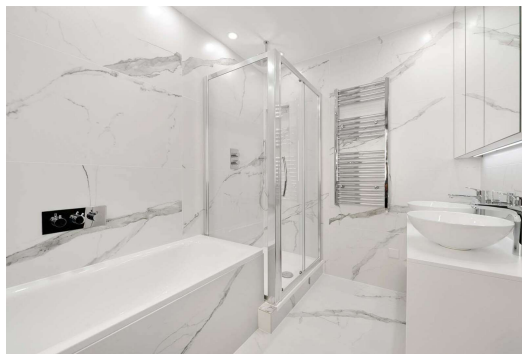
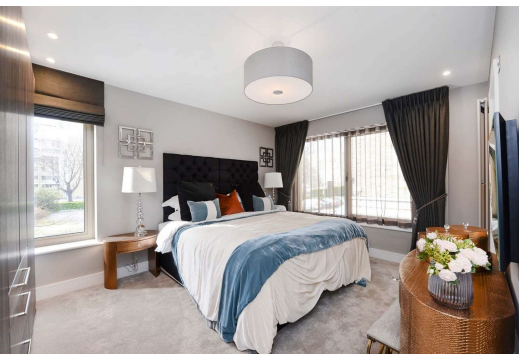


Boydell Court

St. Johns Wood Park, NW8

£5,633.33 per month
(£1,300.00 per week)

A modern apartment in a purpose built portered building moments from Swiss Cottage Underground.



Boydell Court

St. Johns Wood Park, NW8

- First Floor Flat,
- 3 Bedrooms, 3 Bathrooms
- Porter, Lift
- Close to Swiss Cottage Station



This modern apartment comprises 3 double bedrooms with fitted in wardrobes, 3 bathrooms (2 en-suite), large reception area, fully equipped kitchen and plenty of storage.

The property is located moments from the amenities of St. John's Wood High Street, Finchley Road and Swiss Cottage Underground (Jubilee Line).

Minimum Term: 6 months
Deposit Required: £0.00
Local Authority: Camden
Council Tax Band: F
EPC Rating: B
Furnished

Energy Efficiency Rating		
	Current	Potential
Very energy efficient - lower running costs		
(92-100) A		
(81-91) B	81	81
(69-80) C		
(55-68) D		
(39-54) E		
(21-38) F		
(1-20) G		
Not energy efficient - higher running costs		
England, Scotland & Wales EU Directive 2002/91/EC		

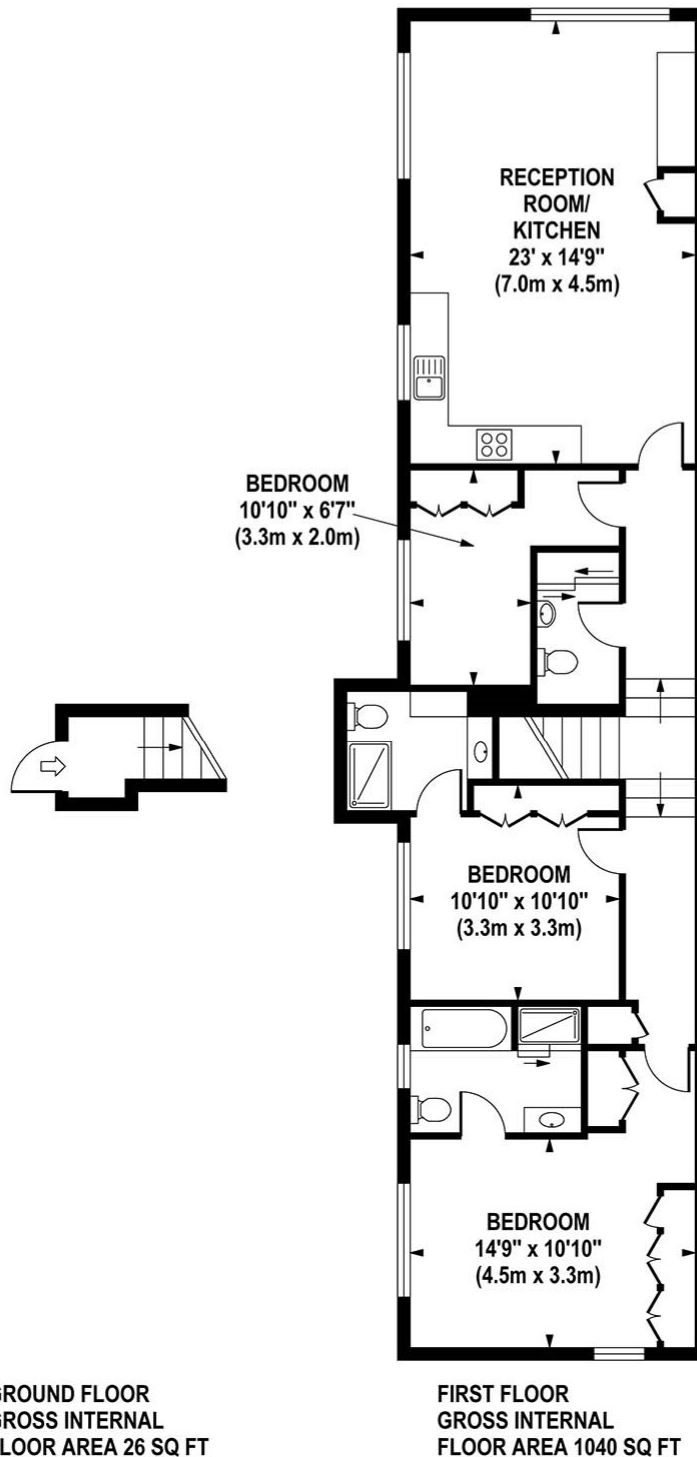
Chestertons St John's Wood Lettings

105 St. Johns Wood Terrace
 London
 NW8 6PL
 stjohswood@chestertons.co.uk
 02030408622
 chestertons.co.uk

Additional tenant charges apply (fees apply to non-AST tenancies only)
 Tenancy Agreement Fee: £300
 References per Tenant/Guarantor: £60
 Inventory check (approx. £100 – £250 inc. VAT)
 chestertons.co.uk/property-to-rent/applicable-fees

BOYDELL COURT

Approximate Gross Internal Area 1066 sq ft / 99.0 sq m



Although every attempt has been made to ensure accuracy, all measurements are approximate.
The floor plan's for illustrative purposes only and not to scale. Measured in accordance to RICS standards.

DE-PHOTOGRAPHY.NET

