



Chiltern Court

Baker Street, NW1

£10,000 per month
(£2,307.69 per week)

A large four bedroom apartment set in a secure portered block on the famous Baker Street, just above Baker Street Station and close to the amenities of Marylebone Village.



Chiltern Court

Baker Street, NW1

- Fifth Floor Apartment
- 4 Bedrooms, 2 Bathrooms, Double Reception Room
- Lift, 24hr Porter, Wood Floors
- Above Baker Street Station

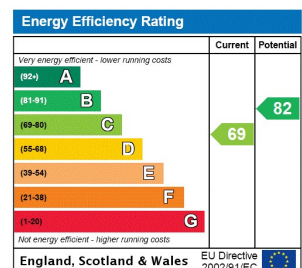


A large four bedroom apartment set in a secure portered block on the famous Baker Street, just above Baker Street Station and close to the amenities of Marylebone Village.

The property comprises four double bedrooms, double reception room, two bathrooms, and good sized eat in kitchen.

Additional benefits include 24hr porter, wooden floors and lift to all floors.

Minimum Term: 6 months
Deposit Required: £0.00
Local Authority: City of Westminster
Council Tax Band: G
EPC Rating: C
Furnished



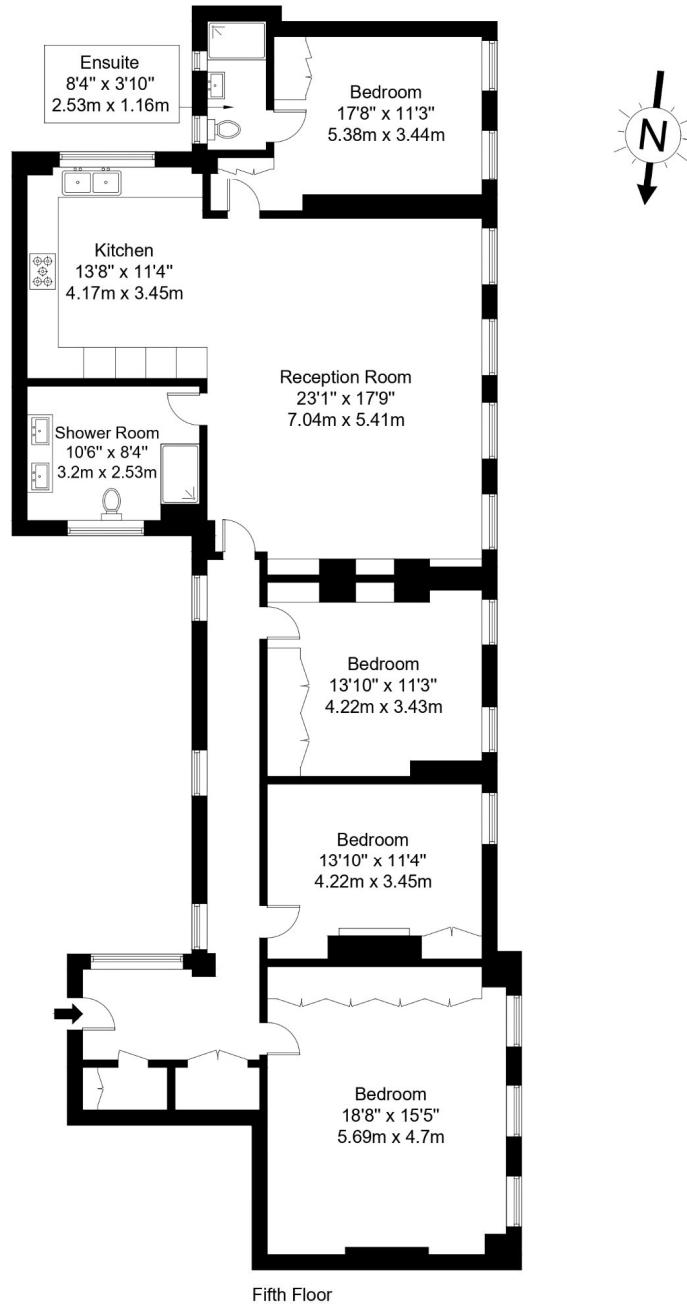
Chestertons St John's Wood Lettings

105 St. Johns Wood Terrace
 London
 NW8 6PL
 stjohswood@chestertons.co.uk
 02030408622
 chestertons.co.uk

Additional tenant charges apply (fees apply to non-AST tenancies only)
 Tenancy Agreement Fee: £300
 References per Tenant/Guarantor: £60
 Inventory check (approx. £100 – £250 inc. VAT)
 chestertons.co.uk/property-to-rent/applicable-fees

Baker Street, NW1 5SW

Approx Gross Internal Area = 161.2 sq m / 1735 sq ft



Ref :

Copyright **BLEU
PLAN**

The Floor plan is not to scale and measurements and areas shown are approximate and therefore should be used for illustrative purposes only. The plan has been prepared in accordance with the RICS code of Measuring Practice and whilst we have confidence in the information produced it must not be relied on. Maximum lengths and widths are represented on the floor plan. If there is any aspect of particular importance, you should carry out or commission your own inspection of the property.

Copyright @ BLEUPLAN

