

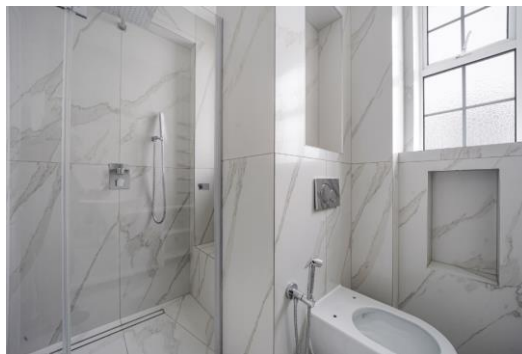


# Berkeley Court

Marylebone Road, NW1

£18,000 per month  
(£4,153.85 per week)

**\*\*SHORT LET\*\*** A substantial, newly renovated three bedroom apartment set in a prestigious sought after mansion block in the heart of Marylebone, boasting 24hr concierge and one of the largest roof terraces in London.



# Berkeley Court

## Marylebone Road, NW1

- Eighth Floor Flat
- 3 Bedrooms, 2 Bathroom, Double Reception Room
- Air Con, Lift, Wooden Floors, 24hr Concierge
- Moments from Marylebone Village and Station



**\*\*SHORT LET\*\*** A substantial, newly renovated three bedroom apartment set in a prestigious sought after mansion block in the heart of Marylebone, boasting 24hr concierge and one of the largest roof terraces in London.

The property comprises three double bedrooms, a large double reception room, two bathrooms (one en-suite) and a separate cloakroom, and a modern fitted kitchen with integrated appliances.

Additional benefits include air conditioning and wooden floors throughout.

**Minimum Term:** 1 months  
**Deposit Required:** £0.00  
**Local Authority:** City of Westminster  
**Council Tax Band:** G  
**EPC Rating:** D  
**Furnished, Part Furnished, Unfurnished**

Energy Efficiency Rating		
	Current	Potential
Very energy efficient - lower running costs		
<b>A</b> (92-100)		
<b>B</b> (81-91)		
<b>C</b> (69-80)		
<b>D</b> (55-68)	62	82
<b>E</b> (39-54)		
<b>F</b> (21-38)		
<b>G</b> (1-20)		
Not energy efficient - higher running costs		
England, Scotland & Wales		EU Directive 2002/91/EC

### *Chestertons St John's Wood Lettings*

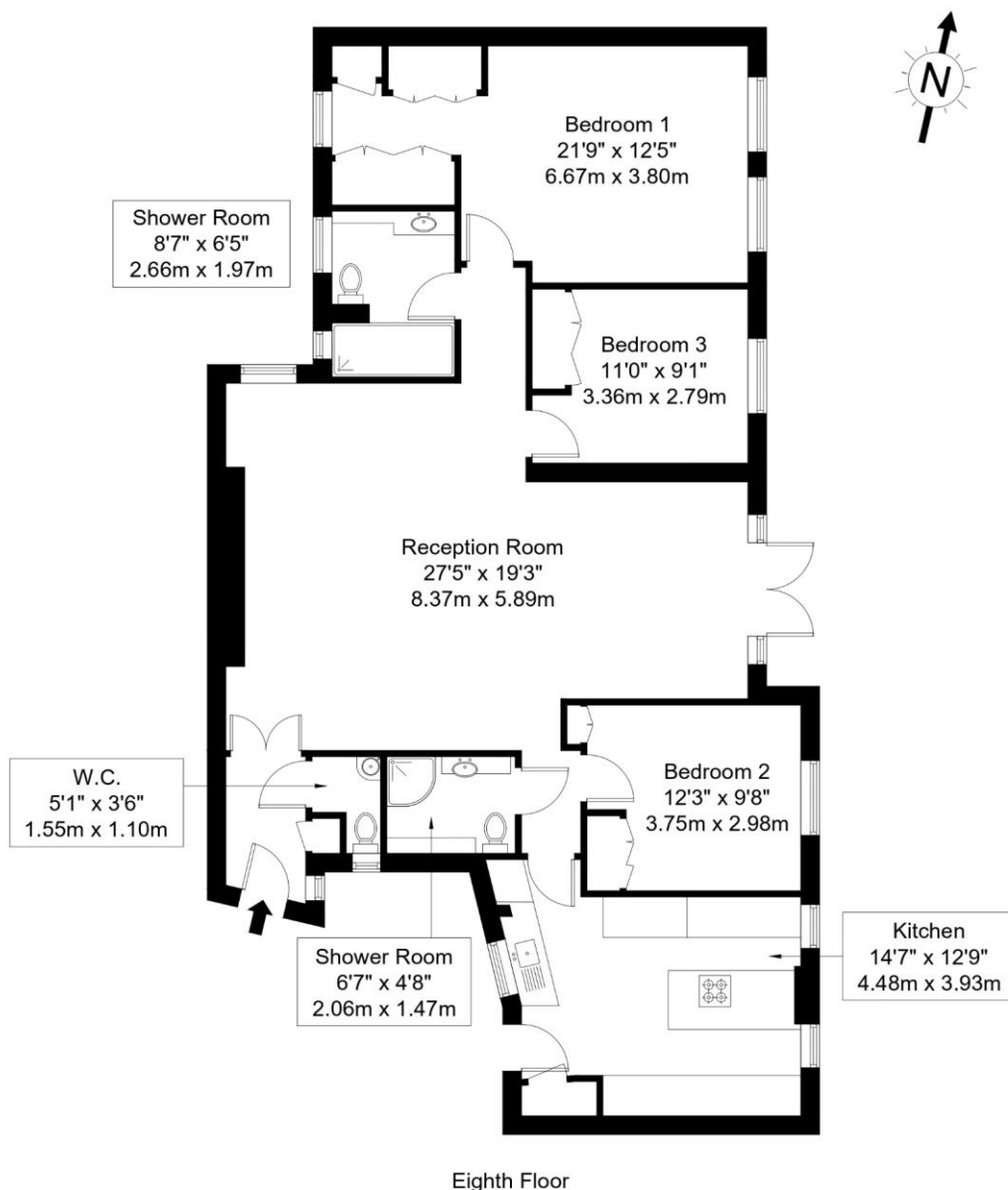
105 St. Johns Wood Terrace  
 London  
 NW8 6PL  
 stjohswood@chestertons.co.uk  
 02030408622  
 chestertons.co.uk

Additional tenant charges apply (fees apply to non-AST tenancies only)  
 Tenancy Agreement Fee: £300  
 References per Tenant/Guarantor: £60  
 Inventory check (approx. £100 – £250 inc. VAT)  
 chestertons.co.uk/property-to-rent/applicable-fees



# Berkeley Court, Marylebone Road, NW1 5NE

Approx Gross Internal Area = 121.66 sq m / 1 309 sq ft



Ref :

Copyright **BLEU  
PLAN**

The Floor plan is not to scale and measurements and areas shown are approximate and therefore should be used for illustrative purposes only. The plan has been prepared in accordance with the RICS code of Measuring Practice and whilst we have confidence in the information produced it must not be relied on. Maximum lengths and widths are represented on the floor plan. If there is any aspect of particular importance, you should carry out or commission your own inspection of the property.

Copyright @ BLEUPLAN

