

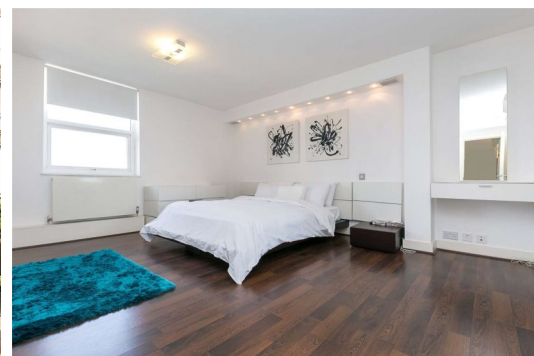


Boydell Court

St. Johns Wood Park, NW8

£675 per week
(£2,925 pcm)

*** VIDEO VIEWING AVAILABLE*** Modern and spacious apartment with air-conditioning units in development with 24 hour porter.



Boydell Court

St. Johns Wood Park, NW8

- A Spacious Apartment in a Portered Development
- 2 Bedrooms, 2 Bathroom
- Air-Condition, Balcony
- Close to Swiss Cottage and St. John's Wood



A modern and spacious 2 bedroom property set on 7th floor (with lift) of a prestigious portered block in St John's Wood. The property comprises of; 2 double bedrooms both with en-suite bathrooms, large reception room with nice views, separate kitchen and WC. The property further benefits from concierge The property is well located for St John's Wood and Swiss Cottage amenities and transport.

Tenure: To be advised
Furnished, Part Furnished

Additional tenant charges apply (fees apply to non-AST tenancies only)
 Tenancy Agreement Fee: £300
 References per Tenant/Guarantor: £60
 Inventory check (approx. £100 – £250 inc. VAT)
[chestertons.com/property-to-rent/applicable-fees](https://www.chestertons.com/property-to-rent/applicable-fees)

Energy Efficiency Rating		
	Current	Potential
Very energy efficient - lower running costs		
(92+) A		
(81-91) B		
(69-80) C	73	81
(55-68) D		
(39-54) E		
(21-38) F		
(1-20) G		
Not energy efficient - higher running costs		
England, Scotland & Wales		EU Directive 2002/91/EC

Chestertons St John's Wood Lettings

122 St John's Wood High Street
 St John's Wood
 London
 NW8 7SG
lettings.stjohnswood@chestertons.com
 02030408622
[chestertons.com](https://www.chestertons.com)

Boydell Court, NW8

Approximate Gross Internal Area
1090 sq ft / 101.26 sq m

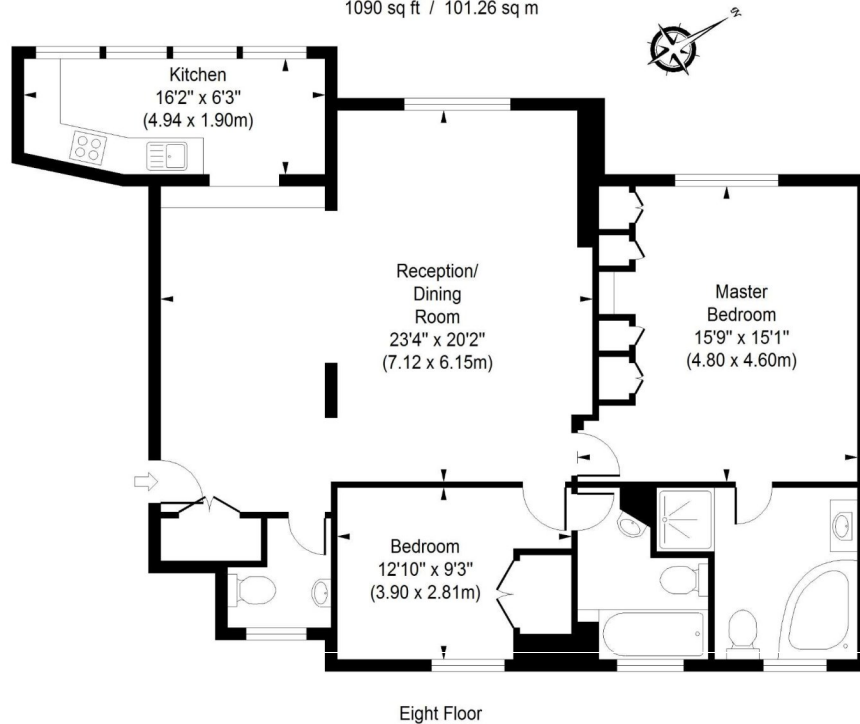


ILLUSTRATION FOR IDENTIFICATION PURPOSES ONLY

ALL MEASUREMENTS ARE MAXIMUM, AND INCLUDE WINDOW BAYS AND WARDROBES WHERE APPLICABLE
THIS PLAN MUST NOT BE REPRODUCED BY ANY OTHER PERSON WITHOUT PERMISSION