



Baker Street

Marylebone, NW1

£5,000 per month
(£1,153.85 per week)

This apartment has been refurbished to the very highest standard throughout with wood flooring, under-floor heating, private terrace and air conditioning, located just moments away from Baker Street Underground Station.



Baker Street

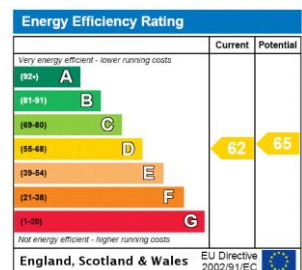
Marylebone, NW1

- Stunning Modern Apartment in Period Conversion
- 2 Bedrooms, 1 Bathroom
- Wood Flooring, Under-floor Heating, Air Conditioning, Lutron Lighting
- Right by Baker Street Underground Station and the Amenities of Marylebone



This apartment has been refurbished to the very highest standard throughout with wood flooring, under-floor heating, and air conditioning. Comprising; 2 double bedrooms, private terrace, gorgeous bathroom, sleek modern kitchen, and spacious reception room, the apartment is located in a period conversion just moments from Baker Street Underground, the amenities of Marylebone, and Regents Park.

Minimum Term: 6 months
Deposit Required: £5,769.23
Local Authority: City of Westminster
Council Tax Band: F
EPC Rating: D
Furnished, Part Furnished



Chestertons St John's Wood Lettings

105 St. John's Wood Terrace
 London
 NW8 6PL
 stjohswood@chestertons.co.uk
 02030408622
 chestertons.co.uk

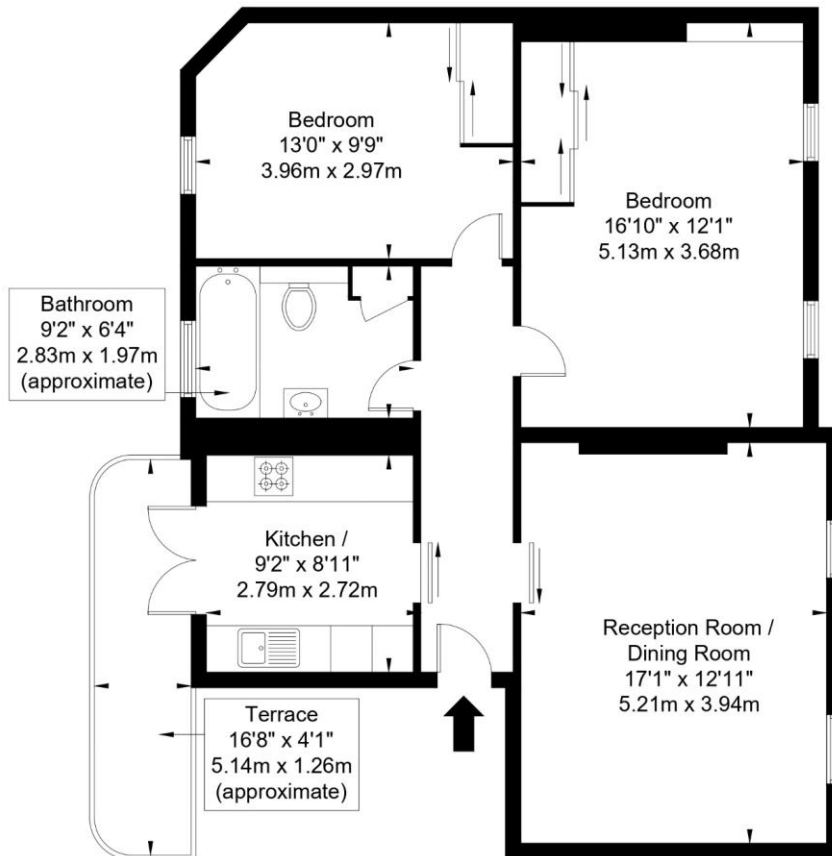
Additional tenant charges apply (fees apply to non-AST tenancies only)
 Tenancy Agreement Fee: £300
 References per Tenant/Guarantor: £60
 Inventory check (approx. £100 – £250 inc. VAT)
 chestertons.co.uk/property-to-rent/applicable-fees

Baker street, NW1 6XE

Approx Gross Internal Area = 75 sq m / 807 sq ft

Terrace = 6.4 sq m / 68 sq ft

Total= 81.4 sq m / 876 sq ft



Third Floor

Ref:

Copyright **BLEU
PLAN**

The Floor plan is not to scale and measurements and areas shown are approximate and therefore should be used for illustrative purposes only. The plan has been prepared in accordance with the RICS code of Measuring Practice and whilst we have confidence in the information produced it must not be relied on. If there is any aspect of particular importance, you should carry out or commission your own inspection of the property.

Copyright @ BLEUPLAN

