



Abercorn Place

St John's Wood, NW8

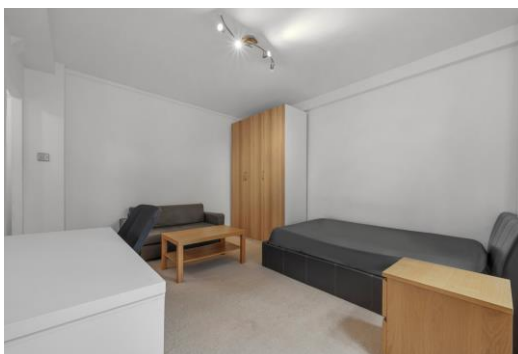
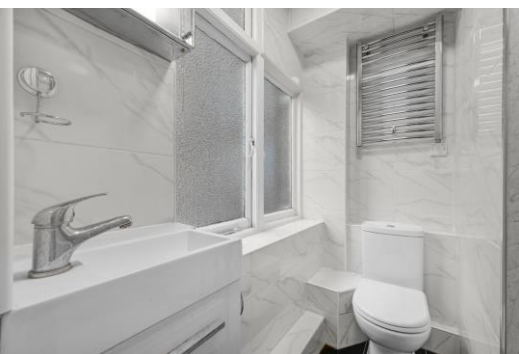
Asking Price £300,000

Sole Agent. A bright studio apartment situated on the 3rd floor (with lifts) of this portered building on Abercorn Place.

The apartment is offered in good decorative condition throughout and has a studio room, kitchen and shower room.

29 Abercorn Place is an exceptionally well maintained building with a recently refurbished entrance lobby, 3 passenger lifts and a communal garden. St John's Wood Underground station (Jubilee Line) is less than a 10 minute walk away.

CHESTERTONS



Abercorn Place

St John's Wood, NW8

- Studio Apartment
- 256 sq. ft.
- 92 Year Leasehold
- Porter
- Lifts



Tenure: Leasehold

Service Charge: £1653.58pa (Includes a sinking fund contribution of £360pa)

Ground Rent: £250pa

Local Authority: Westminster

Council Tax Band: C

| Score | Energy rating | Current | Potential |
|-------|---------------|---------|-----------|
| 92+ | A | | |
| 81-91 | B | | |
| 69-80 | C | 73 C | 79 C |
| 55-68 | D | | |
| 39-54 | E | | |
| 21-38 | F | | |
| 1-20 | G | | |

Chestertons St John's Wood Sales

105 St. John's Wood Terrace

London

NW8 6PL

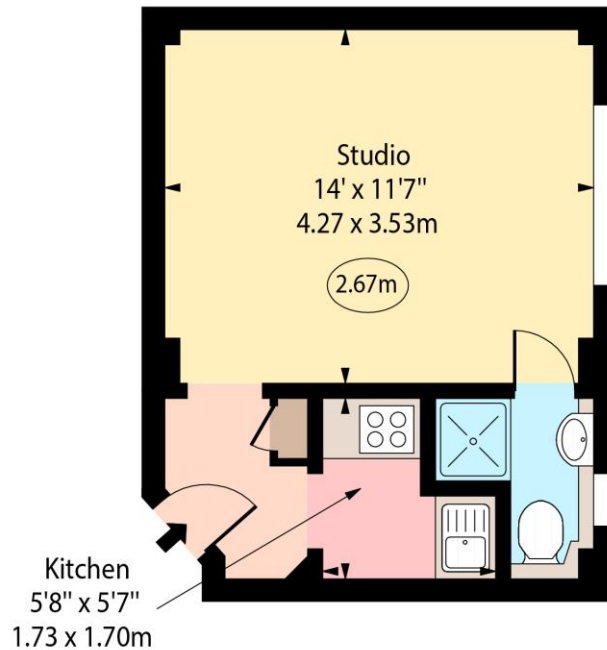
stjohnswood@chestertons.co.uk

020 3040 8611

chestertons.co.uk

Abercorn Place,
St John's Wood, NW8

○ - Ceiling Height



Third Floor

Approx Gross Internal Area 256 Sq Ft - 23.78 Sq M

Every attempt has been made to ensure the accuracy of the floor plan shown.
However, all measurements, fixtures, fittings, and data shown are approximate interpretations and
for illustrative purposes only. Measured according to the RICS. Not To Scale.

www.goldlens.co.uk
Produced for Chestertons
Ref. No. 030327K

