



# Cornwall Terrace Mews

Regent's Park, NW1

Asking Price £2,000,000

Sole Agent. Set discreetly within one of Regent's Park's most sought-after mews, this beautifully presented two-bedroom, two-bathroom house offers refined living in an exceptional central London location.

Arranged with a well-considered layout and extending to approximately 1,206 sq. ft, the property is presented in excellent condition throughout. A standout feature is the impressive 24 ft reception room, providing generous space for both entertaining and everyday living, complemented by abundant natural light.

The property further benefits from two well-proportioned bedrooms, each served by stylish bathrooms, offering comfort and privacy ideal for both owners and guests. An integral garage adds a rare and valuable element of convenience, perfectly suited to luxury city living.

Positioned moments from the open green spaces of Regent's Park, the property enjoys a tranquil mews setting while remaining close to world-class amenities, transport links, and the cultural offerings of Marylebone and Primrose Hill.

**CHESTERTONS**





# Cornwall Terrace Mews

Regent's Park, NW1

- 2 Bedroom, 2 Bathroom Mews House
- 149 Year Leasehold
- 1,206 sq. ft.
- Superb Condition
- Double Reception Room
- Integral Garage





**Tenure:** Leasehold  
**Service Charge:** £3,336pa  
**Ground Rent:** £0  
**Local Authority:** City of Westminster  
**Council Tax Band:** G

Score	Energy rating	Current	Potential
92+	A		
81-91	B		85 B
69-80	C	73 C	
55-68	D		
39-54	E		
21-38	F		
1-20	G		

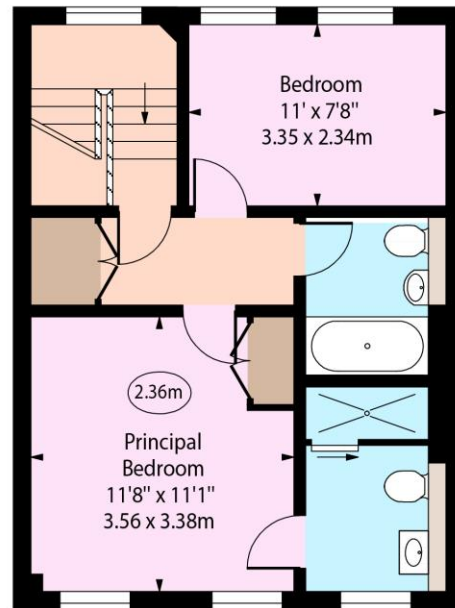
### *Chestertons St John's Wood Sales*

105 St. John's Wood Terrace  
London  
NW8 6PL  
stjohnswood@chestertons.co.uk  
020 3040 8611  
chestertons.co.uk

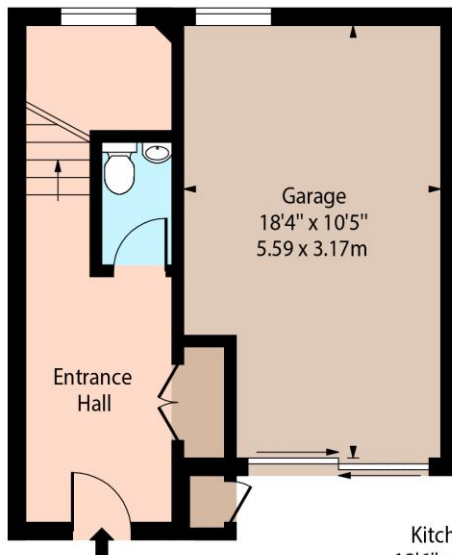
Cornwall Terrace Mews,  
Regent's Park, NW1



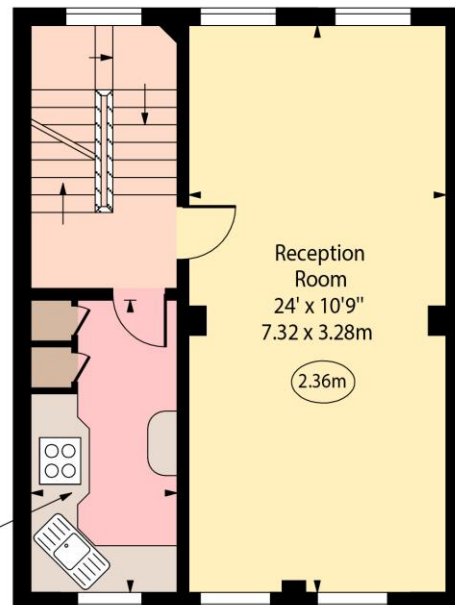
○ - Ceiling Height



Second Floor



Ground Floor



First Floor

Approx Gross Internal Area 1206 Sq Ft - 112.04 Sq M  
(Including Garage)

Every attempt has been made to ensure the accuracy of the floor plan shown. However, all measurements, fixtures, fittings, and data shown are approximate interpretations and for illustrative purposes only. Measured according to the RICS. Not To Scale.

[www.goldlens.co.uk](http://www.goldlens.co.uk)  
Produced for Chestertons  
Ref. No. 030024.1K

