



Abbey Road

St John's Wood, NW8

Asking Price £1,350,000

Joint Sole Agent. A fantastic 3 bedroom, 2 bathroom garden apartment set in this period conversion on Abbey Road.

The apartment is presented in very good condition and benefits from a bright 19ft reception/dining room which has direct access to the private garden plus a reserved parking space is situated at the rear.

Located close to the world famous recording studios and Beatles crossing, the apartment is approximately a 5 minute walk from the Underground station (Jubilee Line) and the gorgeous Violet Hill Park is just at the end of Abbey Gardens.

CHESTERTONS



Abbey Road

St John's Wood, NW8

- 3 Bedrooms, 2 Bathrooms with Parking
- 1146 sq. ft.
- Share of Freehold
- Private Garden plus Communal Garden
- Very Good Condition

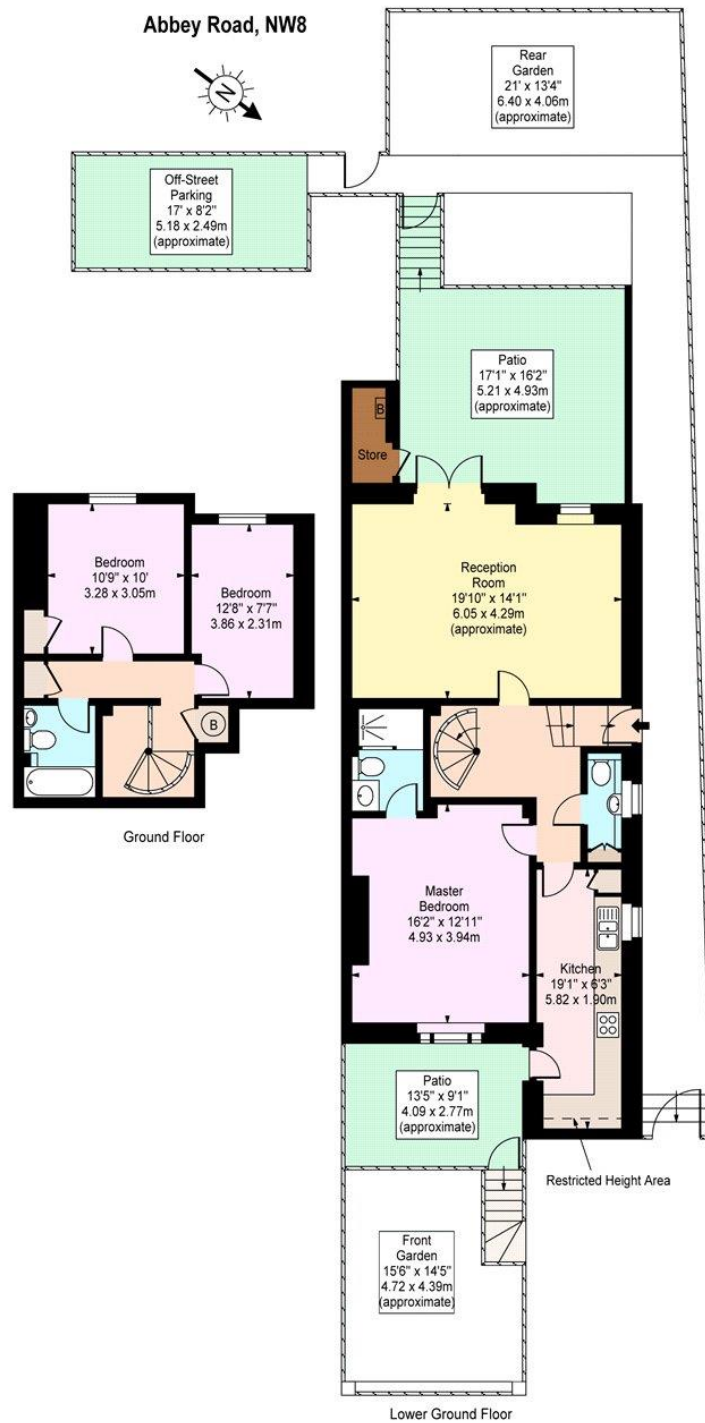


Tenure: Share of Freehold
Service Charge: £3,309pa
Ground Rent: £0
Local Authority: City of Westminster
Council Tax Band: G

Energy Efficiency Rating		
	Current	Potential
Very energy efficient - lower running costs		
A (94-100)		
B (81-93)		81
C (69-80)		
D (55-68)	65	
E (39-54)		
F (21-38)		
G (1-20)		
Not energy efficient - higher running costs		
England, Scotland & Wales		EU Directive 2002/91/EC

Chestertons St John's Wood Sales

105 St. John's Wood Terrace
London
NW8 6PL
stjohnswood@chestertons.co.uk
020 3040 8611
chestertons.co.uk



Approx Gross Internal Area 1146 Sq Ft - 106.46 Sq M

(Including Restricted Height Area)

For Illustration Purposes Only - Not To Scale

www.goldlens.co.uk

Produced for Chestertons

Ref. No. 006194M

