



La Residence

38a Marlborough Place, NW8

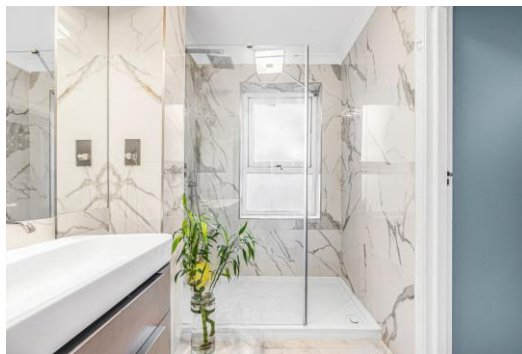
Asking Price £950,000

Sole Agent. A well-presented 2 bedroom, 2 bathroom apartment (907 sq. ft.) situated on the 2nd floor (with lift) benefiting from a south facing balcony and underground parking.

The apartment benefits from a very spacious reception room which is ideal for entertaining and two double doors open onto the balcony allowing natural light to flood the room.

La Residence is a modern portered development situated on Marlborough Place within 0.5 miles of St John's Wood Underground station (Jubilee Line) and 0.7 miles from the shops, cafes, bars and restaurants of St John's Wood High Street.

CHESTERTONS



La Residence

38a Marlborough Place, NW8

- 2 Bedroom 2 Bathroom Apartment
- Share of Freehold
- 907 sq. ft.
- Parking
- Balcony
- Porter
- Lift



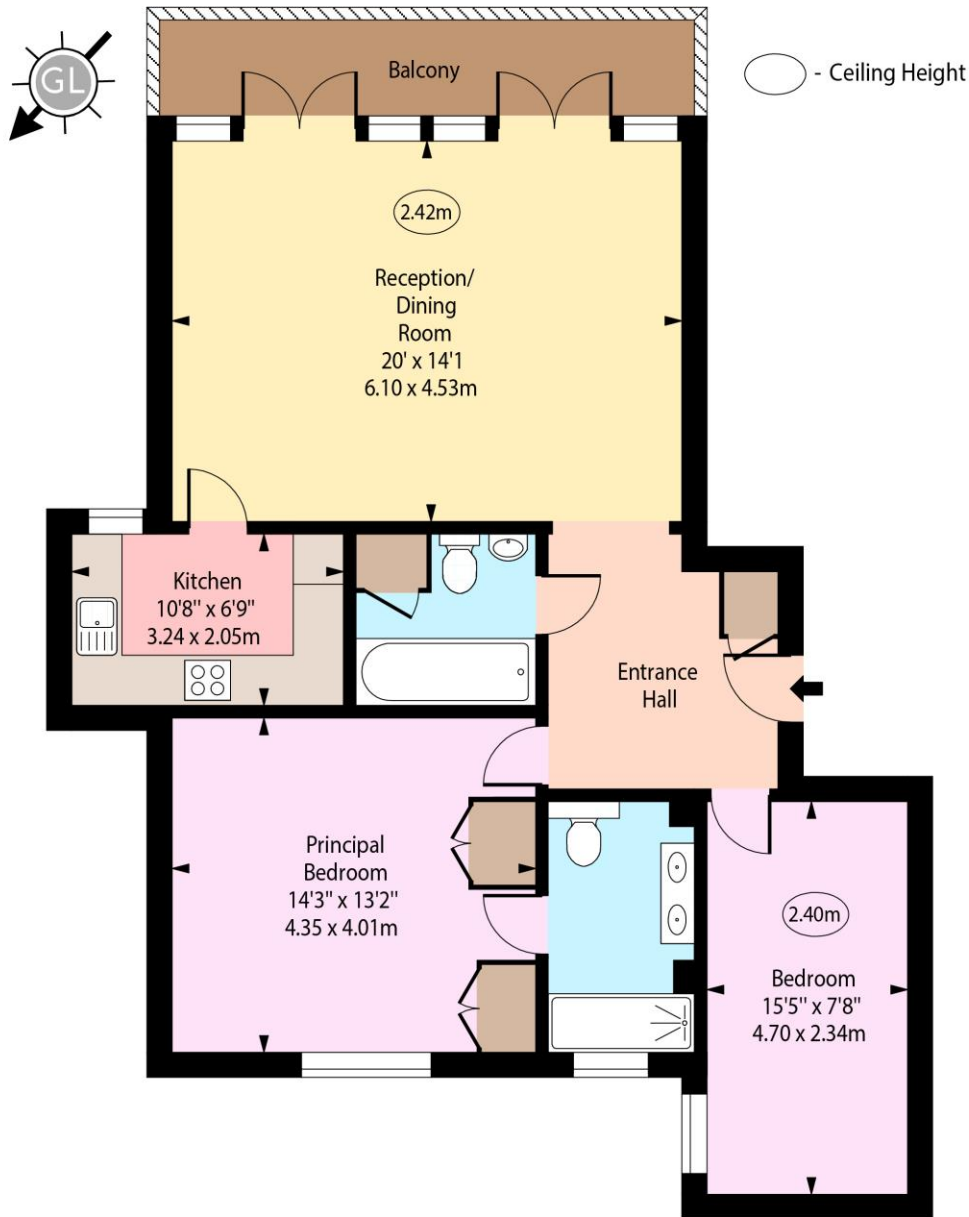
Tenure: Share of Freehold
Service Charge: £5,165pa
Ground Rent: £0
Local Authority: City of Westminster
Council Tax Band: G

Score	Energy rating	Current	Potential
92+	A		
81-91	B		
69-80	C	77 C	91 B
55-68	D		
39-54	E		
21-38	F		
1-20	G		

Chestertons St John's Wood Sales

105 St. John's Wood Terrace
London
NW8 6PL
stjohnswood@chestertons.co.uk
020 3040 8611
chestertons.co.uk

Marlborough Place,
St John's Wood, NW8



Second Floor

Approx Gross Internal Area 907 Sq Ft - 84.26 Sq M

Every attempt has been made to ensure the accuracy of the floor plan shown.
However, all measurements, fixtures, fittings, and data shown are approximate interpretations and
for illustrative purposes only. Measured according to the RICS. Not To Scale.

www.goldlens.co.uk
Produced for Chestertons
Ref. No. 029386W1

