



Grove Hall Court

Hall Road, NW8

Asking Price £995,000

An extremely bright 3 bedroom, 2 bathroom apartment situated on the 7th floor (with lift) of this portered building on Hall Road.

The property offers over 1,000 sq. ft. of well-planned accommodation and benefits from a 21ft reception room and a dual aspect principal bedroom with en suite shower room.

Grove Hall Court has recently been the subject of a major external renovation and has 24 hour portorage. St John's Wood Underground station (Jubilee Line) is approximately a 10 minute walk away.

CHESTERTONS



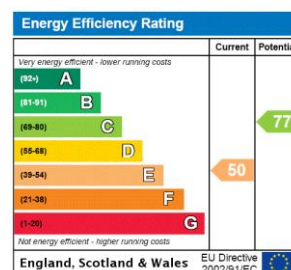
Grove Hall Court

Hall Road, NW8

- 3 Bedroom 2 Bathroom Apartment
- 140 Year Leasehold
- 1040 sq. ft.
- Porter
- 7th Floor (with lift)



Tenure: Leasehold
Service Charge: £11,395pa
Ground Rent: £250pa
Local Authority: City Of Westminster
Council Tax Band: G

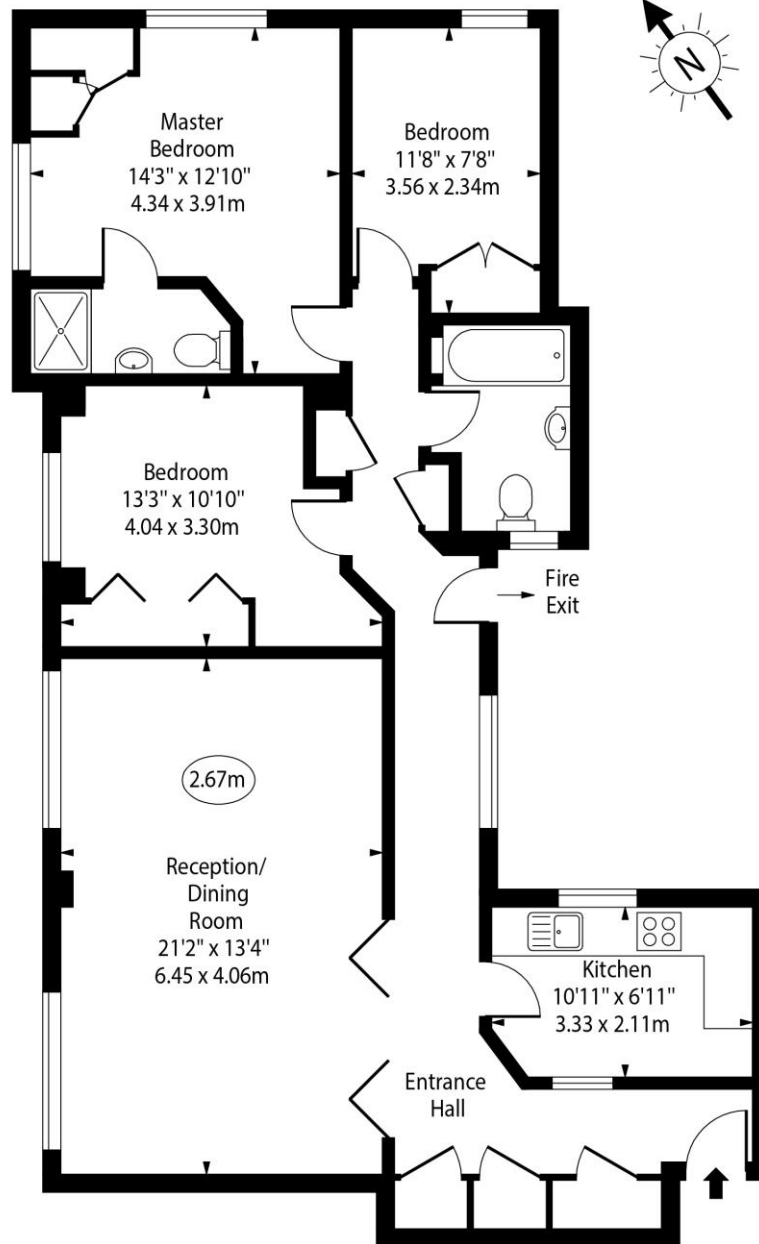


Chestertons St John's Wood Sales

105 St. John's Wood Terrace
London
NW8 6PL
stjohnswood@chestertons.co.uk
020 3040 8611
chestertons.co.uk

Grove Hall Court,
Hall Road,
St. John's Wood, NW8

○ - Ceiling Height



Seventh Floor

Approx Gross Internal Area 1040 Sq Ft - 96.62 Sq M

For Illustration Purposes Only - Not To Scale

www.goldlens.co.uk

Produced for Chestertons

Ref. No. 016520JU

