



# Brackley Court

Pollitt Drive, NW8

Asking Price £600,000

A very bright 3 bedroom apartment (891 sq. ft.) in this modern building just off St John's Wood Road.

This lovely apartment is offered in very good decorative condition throughout and boasts 3 good bedrooms, spacious reception room, fully fitted kitchen, bathroom and a guest WC.

Brackley Court is located a short walk from both Lord's Cricket Ground and the many shops and cafés in Clifton Road, Little Venice.





# Brackley Court

Pollitt Drive, NW8

- 3 Bedroom Apartment
- Long Leasehold
- 891 sq. ft.
- Very Good Condition
- Close to Lord's Cricket Ground



---

**Tenure:** Leasehold  
**Service Charge:** £4,000pa  
**Ground Rent:** £10pa  
**Local Authority:** City of Westminster  
**Council Tax Band:** E

Score	Energy rating	Current	Potential
92+	A		
81-91	B		
69-80	C		
55-68	D	70 C	76 C
39-54	E		
21-38	F		
1-20	G		

---

### *Chestertons St John's Wood Sales*

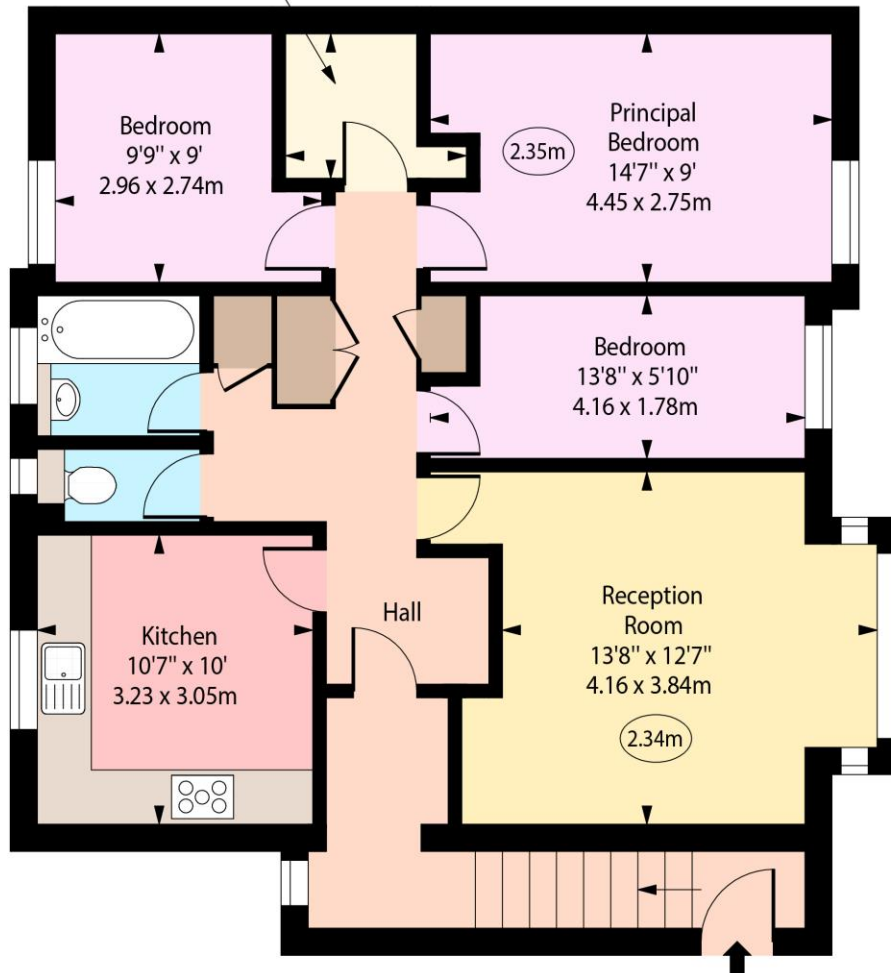
105 St. John's Wood Terrace  
London  
NW8 6PL  
stjohnswood@chestertons.co.uk  
020 3040 8611  
chestertons.co.uk

Brackley Court,  
Pollitt Drive,  
St John's Wood, NW8



Study  
6'9" x 5'7"  
2.05 x 1.69m

○ - Ceiling Height



Third Floor

Approx Gross Internal Area      891 Sq Ft - 82.77 Sq M

Every attempt has been made to ensure the accuracy of the floor plan shown.  
However, all measurements, fixtures, fittings, and data shown are approximate interpretations and  
for illustrative purposes only.

Measured according to the RICS IPMS 2. Not To Scale.

[www.goldlens.co.uk](http://www.goldlens.co.uk)

Produced for Chestertons

Ref. No. 027981J

