



Sheringham

St. John's Wood Park, NW8

Asking Price £1,595,000

An impressive and superbly renovated 3 bedroom, 3 bathroom apartment featuring air conditioning to all principal rooms.

The property benefits from a fantastic open plan kitchen/reception room, principal bedroom with en suite, 2nd en suite bedroom, 3rd bedroom, shower room, 2 balconies and a private lock up garage.

Sheringham forms part of the exclusive 'Queensmead' development which is noted for its excellent portorage, high level of security and residents off street parking facilities.

The building is conveniently situated on St John's Wood Park between Swiss Cottage & St John's Wood Underground stations (both Jubilee Line), thereby offering an excellent choice of transport facilities, shopping amenities, eateries and cafes. The wide open spaces of Primrose Hill and Regent's Park are both within close proximity.



Sheringham

St. John's Wood Park, NW8

- 3 Bedroom, 3 Bathroom Apartment
- Long Leasehold
- 1,203 sq. ft.
- Air Conditioning
- Superb Condition
- Garage
- Porter
- Balcony



Tenure: Leasehold

Service Charge: £14,022pa Including CH, HW, Reserve Fund Contribution & Garage SC

Ground Rent: £0

Local Authority: Camden

Council Tax Band: G

Energy Efficiency Rating		
	Current	Potential
Very energy efficient - lower running costs		
(94-100) A		
(81-93) B		85
(69-80) C	75	
(55-68) D		
(39-54) E		
(21-38) F		
(1-20) G		
Not energy efficient - higher running costs		
England, Scotland & Wales		EU Directive 2002/91/EC

Chestertons St John's Wood Sales

105 St. John's Wood Terrace

London

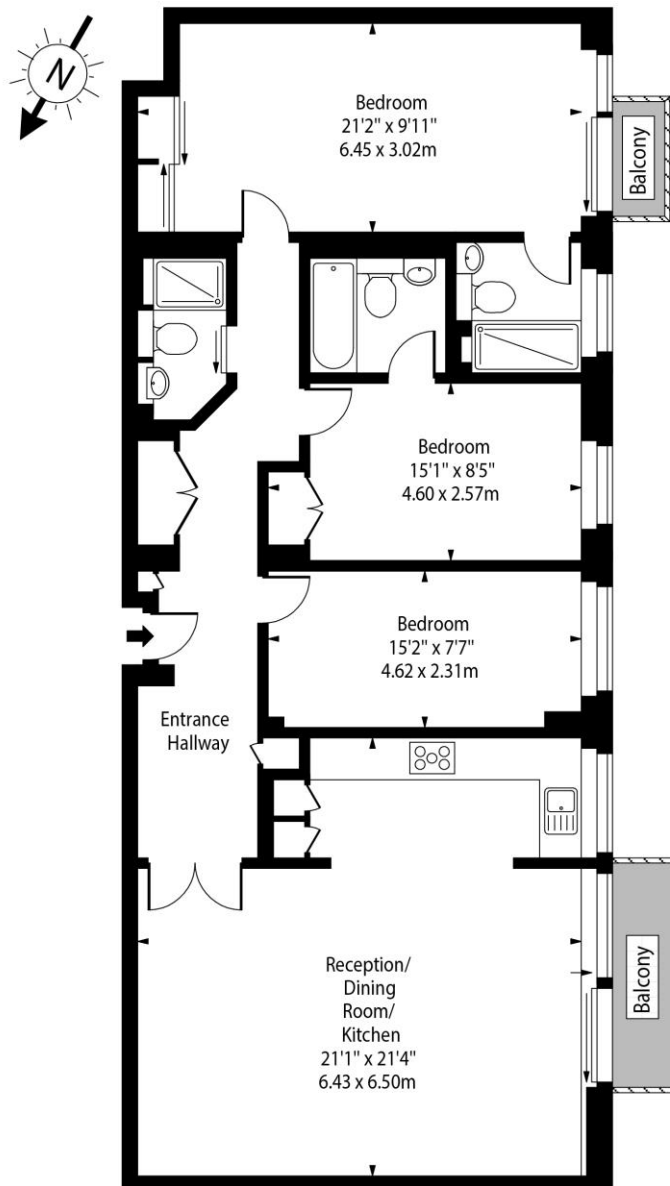
NW8 6PL

stjohnswood@chestertons.co.uk

020 3040 8611

chestertons.co.uk

Sheringham,
St. John's Wood Park, NW8



First Floor

Approx Gross Internal Area 1203 Sq Ft - 111.76 Sq M

For Illustration Purposes Only - Not To Scale Floor Plan by www.nogaphotostudio.com Ref: No.46642

This floor plan should be used as a general outline for guidance only. Any intending purchaser or lessee should satisfy themselves by inspection, searches, enquiries and full survey as to the correctness of each statement. Any areas, measurements or distances quoted are approximate and should not be used to value a property or be the basis of any sale or let.

