



Hamilton Hall

119 Hamilton Terrace, NW8

Asking Price £915,000

Sole Agent. A spacious 2 double bedroom apartment (858 sq. ft.) featuring a 22' reception room with direct access onto a lovely communal garden. The property is presented in good decorative condition and benefits from its own lock up garage.

Hamilton Hall is located on Hamilton Terrace, a prestigious, tree lined avenue which provides excellent access to the local shopping amenities and restaurants in Little Venice and Clifton Road, the Regent's Canal and Maida Vale Underground station (Bakerloo Line). St John's Wood Underground station (Jubilee Line) is 0.6 miles away.



Hamilton Hall

119 Hamilton Terrace, NW8

- 2 Bedroom Apartment
- Leasehold
- 858 sq. ft.
- Communal Garden
- Garage



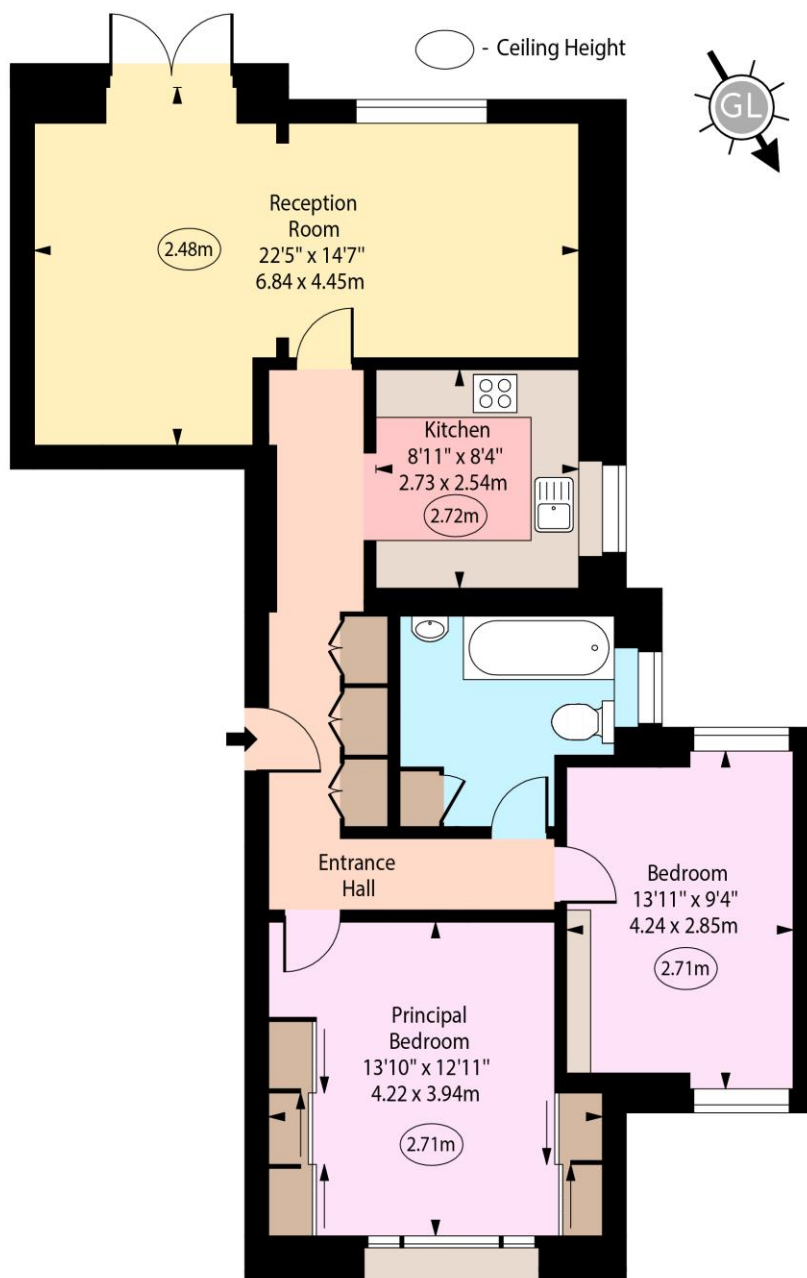
Tenure: Leasehold
Service Charge: £5,448pa
Ground Rent: £0
Local Authority: City of Westminster
Council Tax Band: F

Energy Efficiency Rating		
	Current	Potential
Very energy efficient - lower running costs		
(92-100) A		
(81-91) B		
(69-80) C		78
(55-68) D	57	
(39-54) E		
(21-38) F		
(1-20) G		
Not energy efficient - higher running costs		
England, Scotland & Wales		EU Directive 2002/91/EC

Chestertons St John's Wood Sales

105 St. John's Wood Terrace
London
NW8 6PL
stjohnswood@chestertons.co.uk
020 3040 8611
chestertons.co.uk

Hamilton Hall, Hamilton Terrace, NW8



Lower Ground Floor

Approx Gross Internal Area 858 Sq Ft - 79.71 Sq M

For Illustration Purposes Only - Not To Scale

www.goldlens.co.uk

Produced for Chestertons

Ref. No. 026348R

