



Chiltern Court

Baker Street, NW1

Asking Price £1,950,000

An elegant 4 bedroom, 2 bathroom apartment on the 5th floor (with lift) of a prestigious Marylebone mansion block close to Regent's Park.

This beautifully presented apartment offers spacious living accommodation with lots of natural light and benefits from original parquet flooring. One bedroom with en suite shower room, three further bedrooms, family bathroom, open plan living space with fully fitted kitchen and dining area, entrance hall with further storage.

Formerly the headquarters of the Metropolitan Railway, Chiltern Court is an extremely well-maintained apartment block benefitting from 24 hour portage.



Chiltern Court

Baker Street, NW1

- 4 Bedroom, 2 Bathroom Apartment
- Leasehold
- 1,735 sq. ft.
- Lift
- Porter
- Close to Transport Links



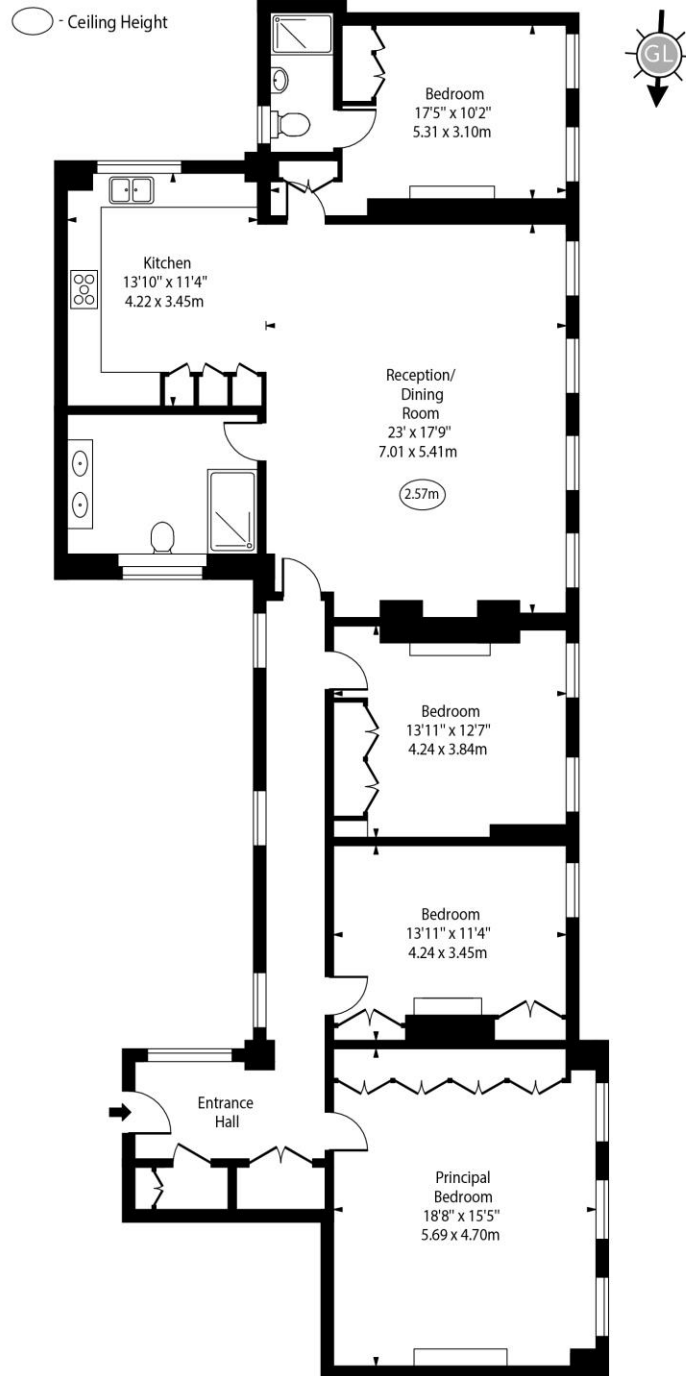
Tenure: Leasehold
Service Charge: £20,444pa
Ground Rent: £250pa
Local Authority: City of Westminster
Council Tax Band: G

Energy Efficiency Rating		
	Current	Potential
Very energy efficient - lower running costs		
A (92-100)		
B (81-91)		82
C (69-80)	69	
D (55-68)		
E (39-54)		
F (21-38)		
G (1-20)		
Not energy efficient - higher running costs		
England, Scotland & Wales		EU Directive 2002/91/EC

Chestertons St John's Wood Sales

105 St. John's Wood Terrace
London
NW8 6PL
stjohnswood@chestertons.co.uk
020 3040 8611
chestertons.co.uk

Chiltern Court,
Baker Street, NW1



Fifth Floor

Approx Gross Internal Area 1735 Sq Ft - 161.18 Sq M

For Illustration Purposes Only - Not To Scale

www.goldlens.co.uk

Produced for Chestertons

Ref. No. 026130E

