



Blenheim Terrace

St John's Wood, NW8

Asking Price £3,750,000

Sole Agent. A charming end of terrace Grade II listed house offering 2,169sq. ft. of accommodation over four floors.

This lovely family house is offered in very good decorative condition throughout and boasts a double reception room on the raised ground floor which opens onto a secluded roof terrace overlooking the mature south facing 80ft garden. The house further benefits from off-street parking for two cars.

Blenheim Terrace is a quiet cul-de-sac situated off the famous Abbey Road and is within walking distance of a number of schools, including the American School and Arnold House, as well as the boutique shops and cafes on St John's Wood High Street and the attractions of Regent's Park and London Zoo.

CHESTERTONS



Blenheim Terrace

St John's Wood, NW8

- 3 Bedroom, 2 Bathroom House
- Freehold
- 2,169 sq. ft. (201 sq. m.)
- 80' South Facing Garden
- Parking for 2 Cars
- Quiet cul-de-sac close to Abbey Road



Tenure: Freehold
Service Charge: £0
Ground Rent: £0
Local Authority: Westminster
Council Tax Band: H

Energy Efficiency Rating		Current	Potential
Very energy efficient - lower running costs			
(92-100)	A		
(81-91)	B		
(69-80)	C		81
(55-68)	D	64	
(39-54)	E		
(21-38)	F		
(1-20)	G		
Not energy efficient - higher running costs			
England, Scotland & Wales		EU Directive 2002/91/EC	

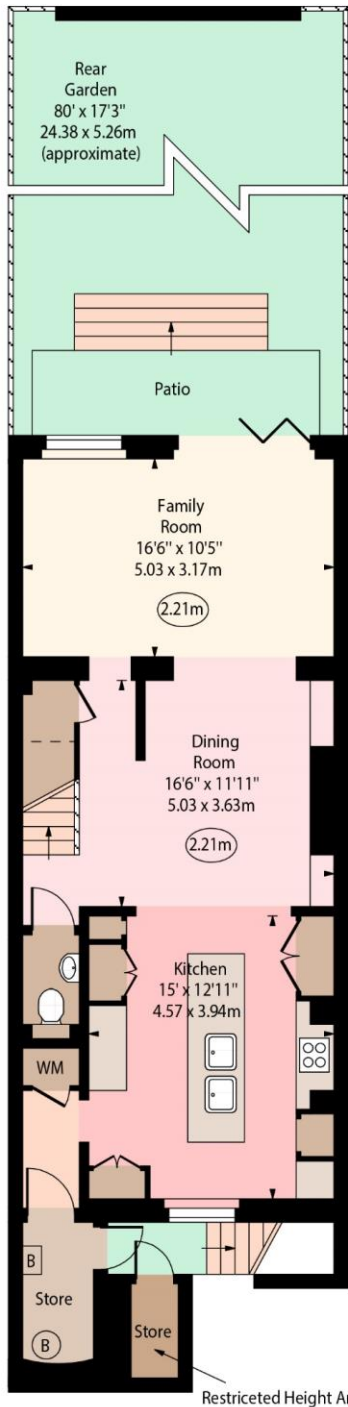
Chestertons St John's Wood Sales

105 St. John's Wood Terrace
London
NW8 6PL
stjohnswood@chestertons.co.uk
020 3040 8611
chestertons.co.uk

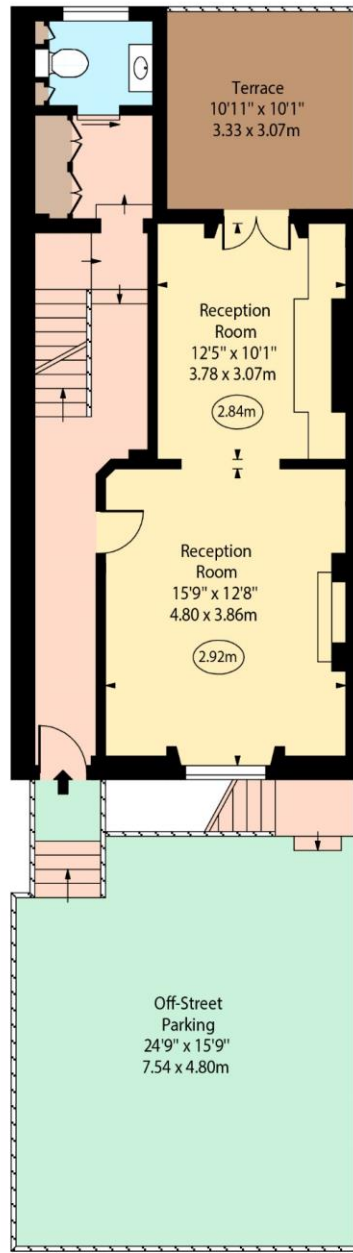
Blenheim Terrace,
St John's Wood, NW8



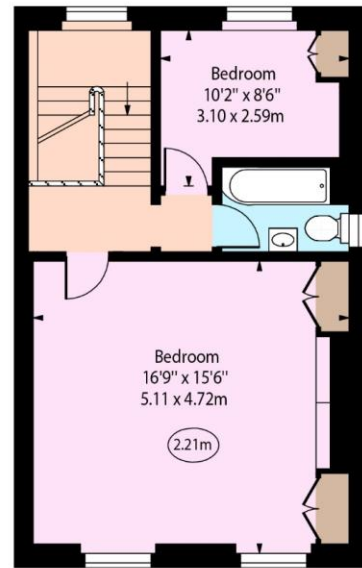
○ - Ceiling Height



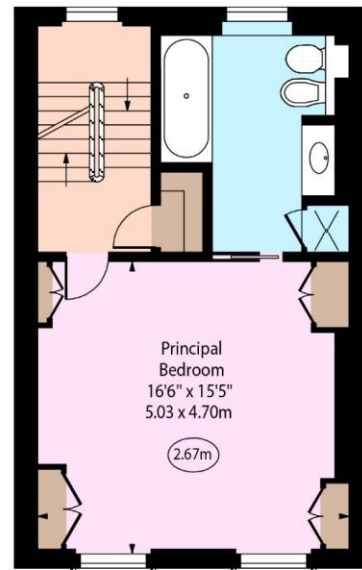
Lower Ground Floor



Raised Ground Floor



Second Floor



First Floor

Approx Gross Internal Area 2169 Sq Ft - 201.50 Sq M
(Excluding Outside Store)

For Illustration Purposes Only - Not To Scale
www.goldlens.co.uk
Produced for Chestertons
Ref. No. 024238M

