



Mortimer Court

Abbey Road, NW8

Asking Price £349,950

Sole Agent. A superbly refurbished studio apartment located in the heart of St John's Wood, offering 352 sq. ft. of very bright accommodation.

Mortimer Court is situated on the world famous Abbey Road, close to the iconic studio and Beatles crossing. St John's Wood Underground station is less than half a mile away. The building has a porter, passenger lift and the property benefits from a recently extended long lease.



Mortimer Court

Abbey Road, NW8

- Studio Apartment
- 352 sq. ft.
- 994 Year Lease
- Very Good Condition
- Porter
- Lift



Tenure: Leasehold 994 years

Service Charge: £3,440pa including a £1,500pa contribution to the sinking fund.

Ground Rent: £0

Local Authority: Westminster

Council Tax Band: C

Chestertons St John's Wood Sales

105 St. John's Wood Terrace

London

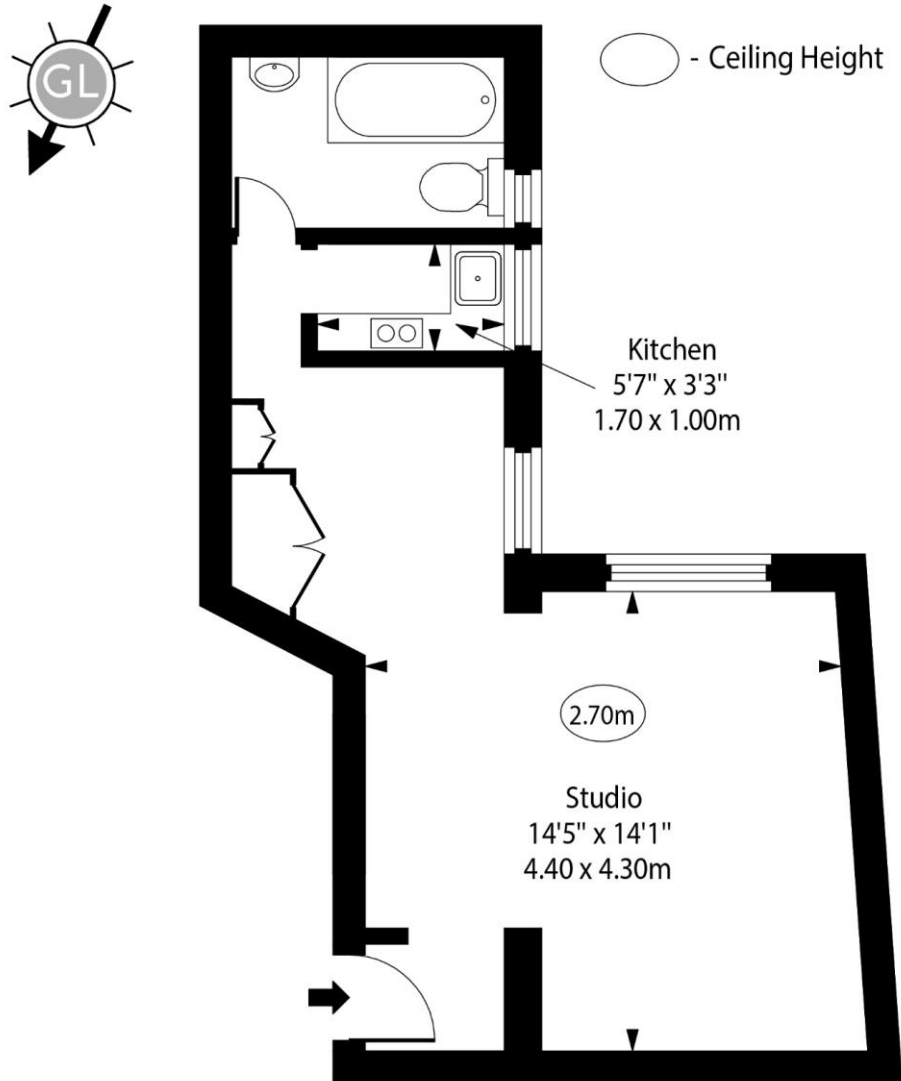
NW8 6PL

stjohnswood@chestertons.co.uk

020 3040 8611

chestertons.co.uk

Mortimer Court,
Abbey Road,
St John's Wood, NW8



Second Floor

Approx Gross Internal Area 352 Sq Ft - 32.70 Sq M

For Illustration Purposes Only - Not To Scale

www.goldlens.co.uk

Produced for Chestertons

Ref. No. 025106IG

