



Greville Road

North Maida Vale, NW6

Asking Price £600,000

A charming 2 bedroom, 2 bathroom raised ground floor apartment benefitting from a private patio garden. The apartment offers 732 sq. ft. of accommodation with very high ceilings and wooden flooring.

This lovely apartment is situated approximately half a mile from Paddington Recreation Ground and is superbly located for multiple shopping and transport links.



Greville Road

North Maida Vale, NW6

- 2 Bedroom, 2 Bathroom Apartment
- Share of Freehold
- 732 sq. ft.
- Very High Ceilings
- Close to Transport Links



Tenure: Share of Freehold (995 year lease)

Service Charge: £943pa

Ground Rent: £0

Local Authority: Camden

Council Tax Band: D

Energy Efficiency Rating		Current	Potential
Very energy efficient - lower running costs	A		
(92-101)	B		
(81-91)	C		
(69-80)	D	67	80
(55-68)	E		
(39-54)	F		
(21-38)	G		
Not energy efficient - higher running costs			
England, Scotland & Wales		EU Directive 2002/91/EC	

Chestertons St John's Wood Sales

105 St. John's Wood Terrace

London

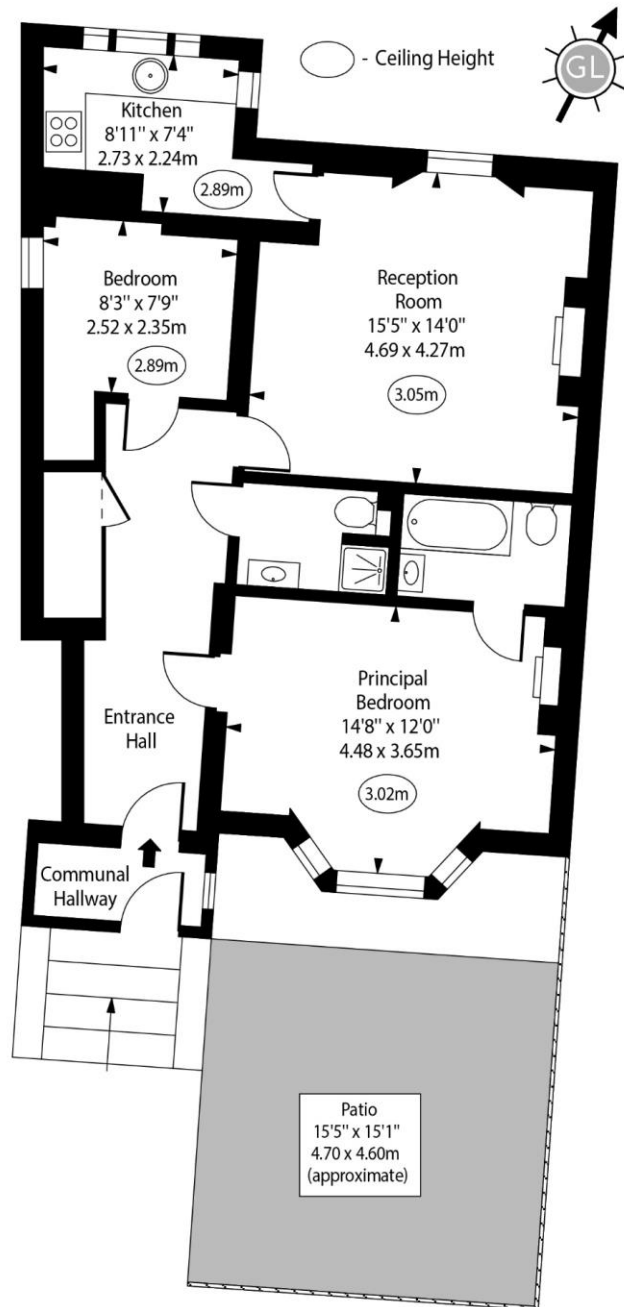
NW8 6PL

stjohnswood@chestertons.co.uk

020 3040 8611

chestertons.co.uk

Greville Road, NW6



Raised Ground Floor

Approx Gross Internal Area 732 Sq Ft - 68.00 Sq M
(Excluding Communal Hallway)

For Illustration Purposes Only - Not To Scale
www.goldlens.co.uk
Prepared for Chestertons
Ref. No. 024973R