



Greville Road

London, NW6

Asking Price £650,000

Sole Agent. A charming 2 bedroom, 2 bathroom raised ground floor apartment benefitting from a private patio garden.

Located 0.1 miles from Kilburn High Road Overground, 0.2 miles from Kilburn Overground (Bakerloo Line) and 0.5 miles from Paddington Recreational Ground.



Greville Road

London, NW6

- Two bedrooms
- Two bathrooms
- Private patio
- Raised ground floor



Tenure: Share of Freehold with a lease of 995 years remaining.

Service Charge: £943pa including building insurance.

Ground Rent: £0

Local Authority: Westminster

Council Tax Band: D

Energy Efficiency Rating		Current	Potential
Very energy efficient - lower running costs			
(92-100)	A		
(81-91)	B		
(69-80)	C		80
(55-68)	D	67	
(39-54)	E		
(21-38)	F		
(1-20)	G		
Not energy efficient - higher running costs			
England, Scotland & Wales		EU Directive 2002/91/EC	

Chestertons St John's Wood Sales

105 St. John's Wood Terrace

London

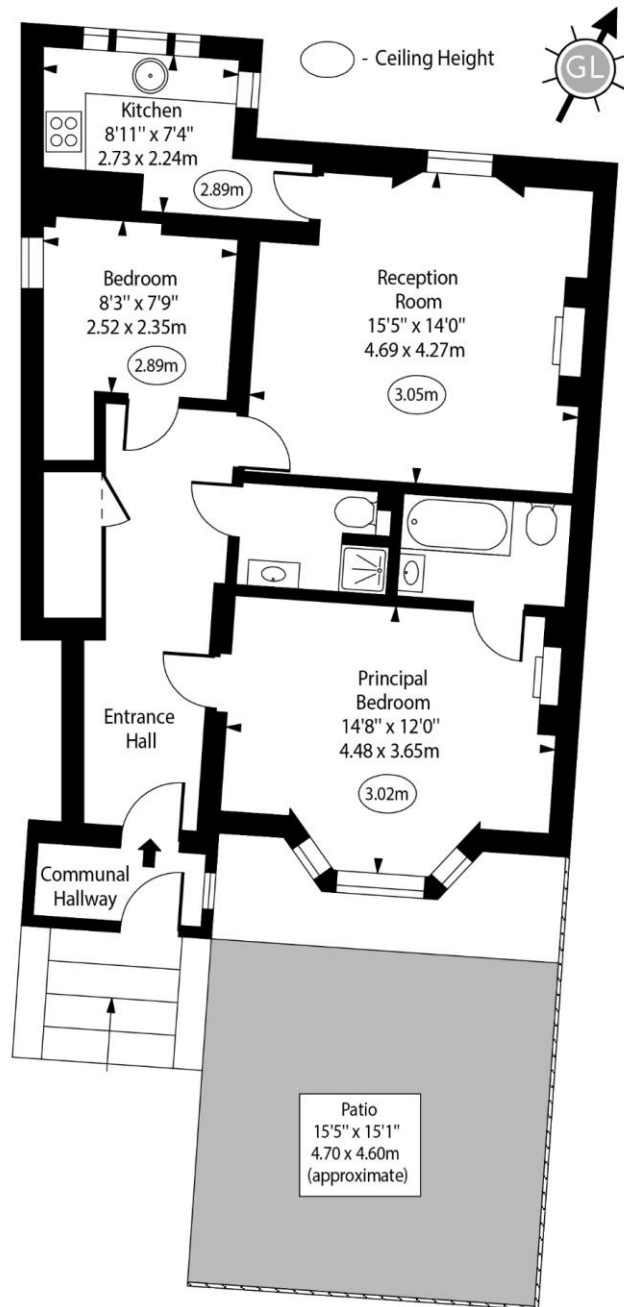
NW8 6PL

stjohnswood@chestertons.co.uk

020 3040 8611

chestertons.co.uk

Greville Road, NW6



Raised Ground Floor

Approx Gross Internal Area 732 Sq Ft - 68.00 Sq M
(Excluding Communal Hallway)

For Illustration Purposes Only - Not To Scale
www.goldlens.co.uk
Prepared for Chestertons
Ref. No. 024973R