



Morris House

Salisbury Street, NW8

Asking Price £400,000

Sole Agent. A bright and well presented top floor one bedroom apartment located in a gated development.

This charming apartment benefits from a great deal of built-in storage, use of a communal garden and is conveniently located for access to Lisson Grove high-street.

Located 0.4 miles from Edgware Road Underground (Bakerloo & Circle Line) and 0.5 miles from Marylebone Underground (Bakerloo Line).



Morris House

Salisbury Street, NW8

- One bedroom
- Top floor
- Communal garden
- Gated development
- 0.4 miles to Bakerloo Line



Tenure: Leasehold 91 years remaining.
Service Charge: £1,466pa Including building insurance.
Ground Rent: £10pa
Local Authority: Westminster
Council Tax Band: B

Energy Efficiency Rating		Current	Potential
Very energy efficient - lower running costs	A		
(92-)	A		
(81-91)	B		
(69-80)	C		
(55-68)	D	59	65
(39-54)	E		
(21-38)	F		
(1-20)	G		
Not energy efficient - higher running costs			
England, Scotland & Wales		EU Directive 2002/91/EC	

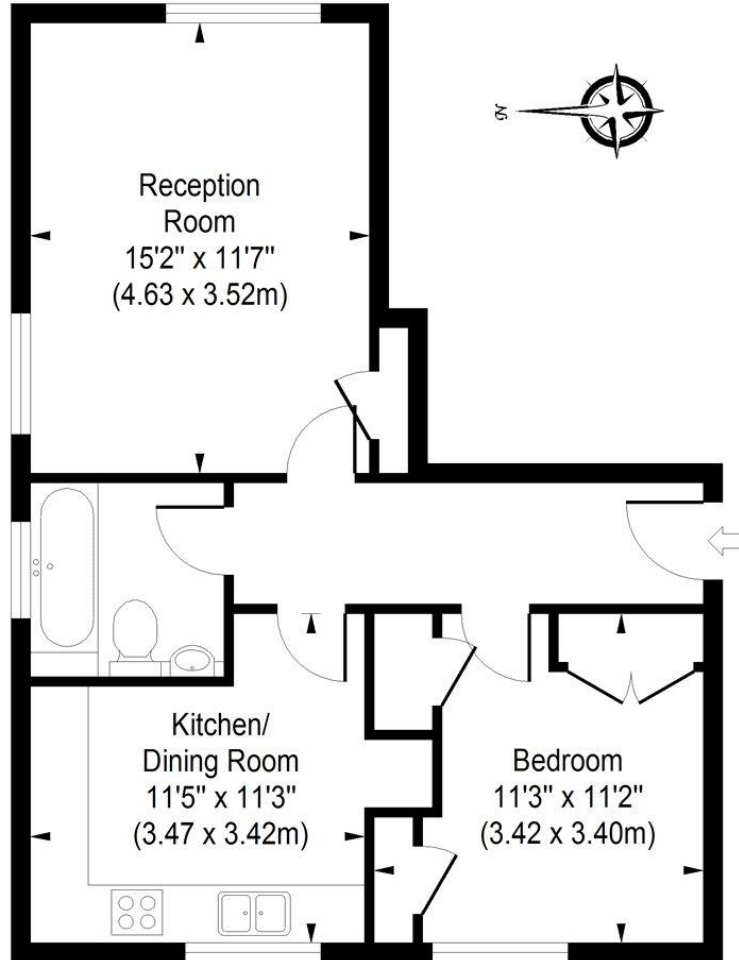
Chestertons St John's Wood Sales

105 St. John's Wood Terrace
 London
 NW8 6PL
 stjohnswood@chestertons.co.uk
 020 3040 8611
 chestertons.co.uk

Morris House

Approximate Gross Internal Area

541 sq ft / 50.28 sq m



Fourth Floor

ILLUSTRATION FOR IDENTIFICATION PURPOSES ONLY

ALL MEASUREMENTS ARE MAXIMUM, AND INCLUDE WINDOW BAYS AND WARDROBES WHERE APPLICABLE
THIS PLAN MUST NOT BE REPRODUCED BY ANY OTHER PERSON WITHOUT PERMISSION

