



# Portman Gate

106 Lisson Grove, NW1

Asking Price £550,000

Sole Agent. A 2 bedroom, 2 bathroom apartment (766 sq. ft.) on the 5th floor (with lift) of this portered building on Lisson Grove.

Portman Gate is a gated development with 24 hour portorage, swimming pool, gym and underground parking.

Located 0.2 miles from Marylebone Underground (Bakerloo Line) and 0.5 miles from Regents Park.



# Portman Gate

## 106 Lisson Grove, NW1

- 2 Bedroom, 2 Bathroom Apartment
- 766 sq. ft.
- Share of Freehold
- 24 Hour Porterage
- Gym & Pool
- Underground Parking



**Tenure:** Share of Freehold with a lease of 960 years remaining.

**Service Charge:** £12,000pa Including building insurance, 24 hour concierge, swimming pool and garage.

**Ground Rent:** £0

**Local Authority:** City of Westminster

**Council Tax Band:** E

Energy Efficiency Rating		Current	Potential
Very energy efficient - lower running costs			
(92-)	A		
(81-91)	B		
(69-80)	C	75	77
(55-68)	D		
(39-54)	E		
(21-38)	F		
(1-20)	G		
Not energy efficient - higher running costs			
England, Scotland & Wales		EU Directive 2002/91/EC	

### Chestertons St John's Wood Sales

105 St. John's Wood Terrace

London

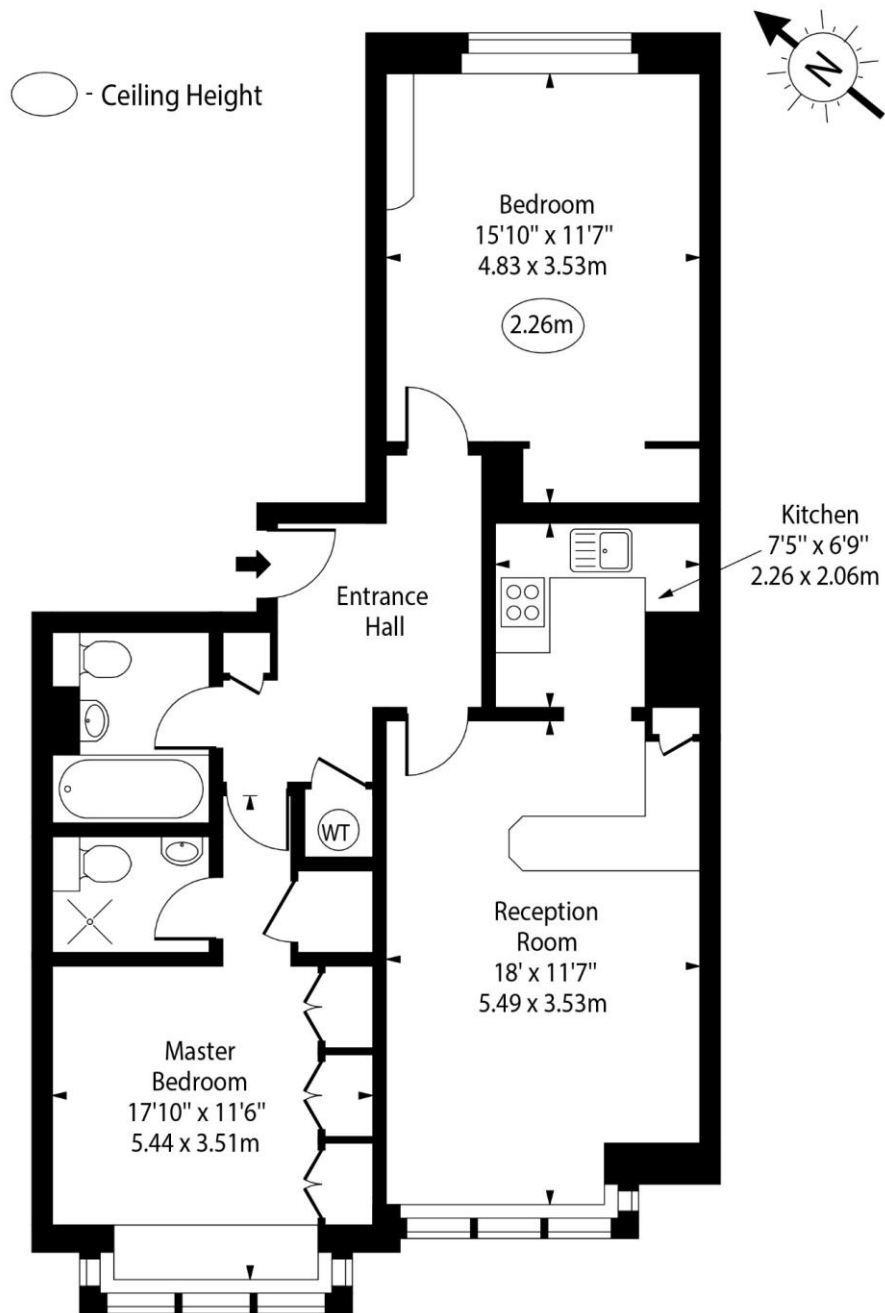
NW8 6PL

stjohnswood@chestertons.co.uk

020 3040 8611

chestertons.co.uk

# Lisson Grove, NW1



Fifth Floor

Approx Gross Internal Area 766 Sq Ft - 71.16 Sq M

For Illustration Purposes Only - Not To Scale

[www.goldlens.co.uk](http://www.goldlens.co.uk)

Produced for Chestertons

Ref. No. 016655K

