



Alma Square

St John's Wood, NW8

Asking Price £625,000

Sole Agent. A fantastic one bedroom apartment set on the raised ground floor of this period conversion in Alma Square.

The apartment has superb ceiling height in the reception room which overlooks the gorgeous Alma Square gardens and the property also benefits from its own terrace accessed from the kitchen.

Alma Square is the only garden square in St John's Wood and is located approximately half a mile from the Underground station (Jubilee Line).



Alma Square

St John's Wood, NW8

- One Bedroom Apartment
- 149 Year Leasehold
- 496 sq. ft.
- Terrace
- Access to Alma Square Gardens



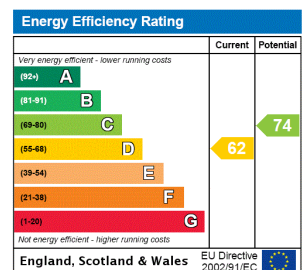
Tenure: Leasehold 149 years remaining.

Service Charge: £4,000pa includes £1,000pa into the reserve fund.

Ground Rent: £50 pa

Local Authority: Westminster

Council Tax Band: E



Chestertons St John's Wood Sales

105 St. John's Wood Terrace

London

NW8 6PL

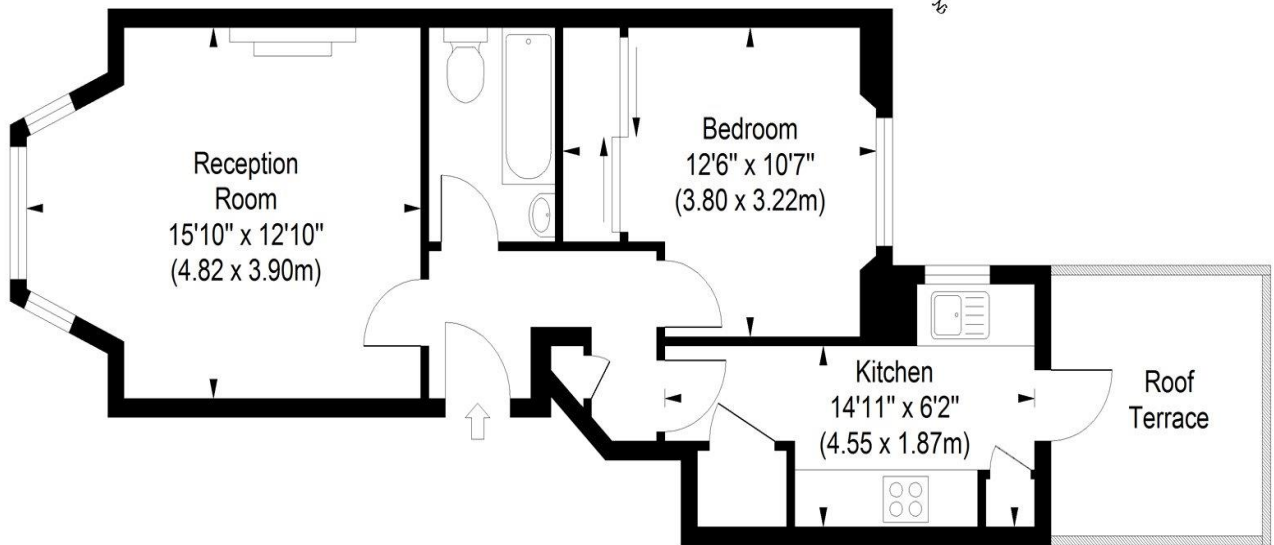
stjohnswood@chestertons.co.uk

020 3040 8611

chestertons.co.uk

Alma Square, NW8

Approximate Gross Internal Area
496 sq ft / 46.07 sq m



Upper Ground Floor

ILLUSTRATION FOR IDENTIFICATION PURPOSES ONLY

ALL MEASUREMENTS ARE MAXIMUM, AND INCLUDE WINDOW BAYS AND WARDROBES WHERE APPLICABLE
THIS PLAN MUST NOT BE REPRODUCED BY ANY OTHER PERSON WITHOUT PERMISSION

