



Chiltern Court

Baker Street, NW1

Asking Price £650,000

A spacious (690 sq. ft.) and bright one bedroom apartment set on the 7th floor (with lift) of this portered building in Baker Street.

The property comprises of a 17ft reception room, separate kitchen, large bedroom with en suite bathroom and benefits from wooden flooring, communal heating & hot water and 24 hour portorage.

Chiltern Court is located just next to Baker Street Underground station.



Chiltern Court

Baker Street, NW1

- One Bedroom Apartment
- Leasehold
- 690 sq. ft.
- Porter
- Lift
- Close to Transport Links



Tenure: Leasehold

Service Charge: £7,224pa Includes CH & HW.

Ground Rent: £140pa

Local Authority: Westminster

Council Tax Band: G

Energy Efficiency Rating		
	Current	Potential
Very energy efficient - lower running costs		
A (91-100)		
B (81-90)		
C (69-80)		73
D (55-68)		
E (39-54)	44	
F (21-38)		
G (1-20)		
Not energy efficient - higher running costs		
England, Scotland & Wales EU Directive 2002/91/EC		

Chestertons St John's Wood Sales

122 St John's Wood High Street

London

NW8 7SG

stjohnswood@chestertons.co.uk

020 3040 8611

chestertons.co.uk



Chiltern Court

Approximate Gross Internal Area
690 sq ft / 64.09 sq m

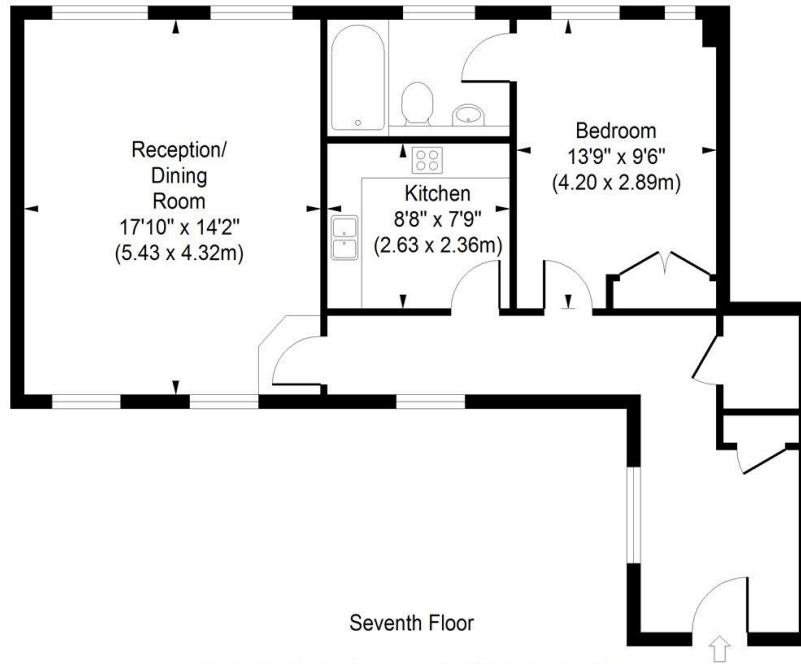


ILLUSTRATION FOR IDENTIFICATION PURPOSES ONLY

ALL MEASUREMENTS ARE MAXIMUM, AND INCLUDE WINDOW BAYS AND WARDROBES WHERE APPLICABLE
THIS PLAN MUST NOT BE REPRODUCED BY ANY OTHER PERSON WITHOUT PERMISSION

