



Wellington Court

55-67 Wellington Road, NW8

Asking Price £1,065,000

A newly refurbished, 2 double bedroom, 2 bathroom apartment situated on the ground floor of this highly popular portered building in the heart of St John's Wood.

This impressive apartment benefits from good natural light and provides comfortable living accommodation comprising a large reception room with an open plan kitchen and a bay window, principal bedroom with en suite shower room, a second bedroom and separate family bathroom.

Wellington Court is located almost directly opposite St John's Wood Underground station (Jubilee Line) and is less than a 5 minute walk from the High Street. NB - A parking space is available by separate negotiation.



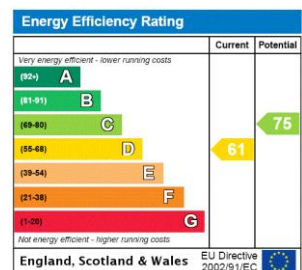
Wellington Court

55-67 Wellington Road, NW8

- 2 Bedroom, 2 Bathroom Apartment
- Leasehold
- 866 sq. ft.
- Parking by Separate Negotiation
- Porter



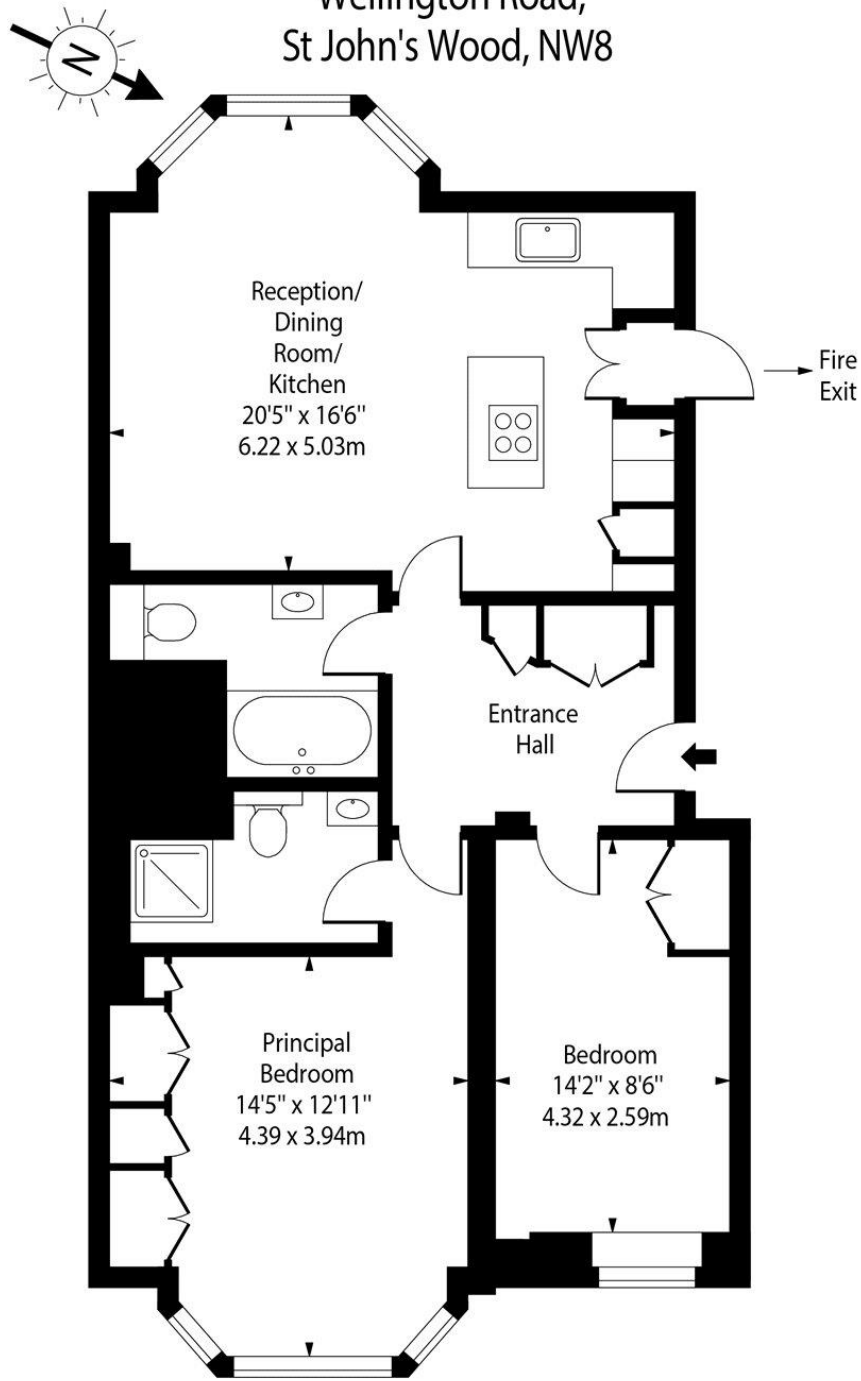
Tenure: Leasehold 99 years remaining.
Service Charge: £13,250 Includes £3,226pa into the sinking fund.
Ground Rent: £0
Local Authority: City of Westminster
Council Tax Band: F



Chestertons St John's Wood Sales

105 St. John's Wood Terrace
 London
 NW8 6PL
 stjohnswood@chestertons.co.uk
 020 3040 8611
 chestertons.co.uk

Wellington Court,
Wellington Road,
St John's Wood, NW8



Ground Floor

Approx Gross Internal Area 866 Sq Ft - 80.45 Sq M

For Illustration Purposes Only - Not To Scale

