



Eyre Court

3-21 Finchley Road, NW8

Asking Price £900,000

Joint Sole Agent. A bright 2 bedroom apartment located on the 6th floor (with lift) of this prestigious red brick mansion block with 24-hour portage.

Eyre Court is one of the most reputable mansion blocks in St John's Wood and is situated opposite St Johns Wood Underground station (Jubilee Line) and 0.3 miles from the High Street with its multiple shopping facilities and exclusive eateries.



Eyre Court

3-21 Finchley Road, NW8

- 2 Bedroom Apartment
- Leasehold
- 895 sq. ft.
- Porter
- Lift
- Communal Garden



Tenure: Leasehold 52 years remaining
Service Charge: £8,972pa includes CH & HW
Ground Rent: £100pa
Local Authority: Westminster
Council Tax Band: F

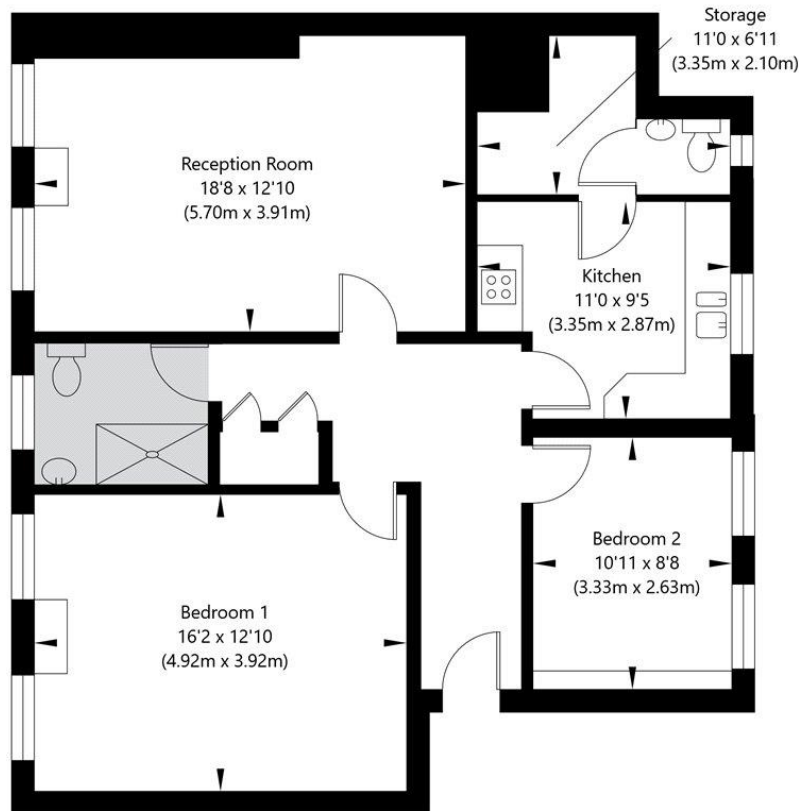
Energy Efficiency Rating		
	Current	Potential
Very energy efficient - lower running costs		
A (94-100)		
B (81-93)		
C (69-80)		
D (55-68)		68
E (39-54)	45	
F (21-38)		
G (1-20)		
Not energy efficient - higher running costs		
England, Scotland & Wales		EU Directive 2002/91/EC

Chestertons St John's Wood Sales

122 St John's Wood High Street
 London
 NW8 7SG
 stjohnswood@chestertons.co.uk
 020 3040 8611
 chestertons.co.uk

Eyre Court, London, NW8 9TT

Sixth Floor
GROSS INTERNAL FLOOR AREA
APPROX. 83.13 SQ M / 895 SQ FT



APPROXIMATE GROSS INTERNAL FLOOR AREA 83.13 SQ M / 895 SQ FT
THIS FLOOR PLAN IS FOR ILLUSTRATIVE PURPOSES ONLY AND
SHOULD BE USED FOR THIS PURPOSE BY PROSPECTIVE APPLICANTS AS ITS NOT TO SCALE.

(c) AMBERSHORE PIX LIMITED / PHOTO - VIDEO - FLOOR PLANS / 0800 999 1577 / WWW.AMERSHOREPIX.CO.UK

