



Neville Court

Abbey Road, NW8

Asking Price £695,000

A superb 7th floor (with lift) 1 bedroom balcony apartment situated opposite the world famous recording studios in Abbey Road.

The apartment (615 sq. ft.) is offered in good decorative condition throughout and benefits from a 16ft reception room and an eat-in kitchen.

Neville Court is under half a mile from St John's Wood Underground station (Jubilee Line).



Neville Court

Abbey Road, NW8

- 1 Bedroom Apartment
- Share of Freehold
- 615 sq. ft.
- Lift
- Balcony
- Porter



Tenure: Leasehold plus Share of Freehold

Service Charge: £4,600pa

Ground Rent: £0

Local Authority: Westminster

Council Tax Band: D

Energy Efficiency Rating		
	Current	Potential
Very energy efficient - lower running costs		
A (92-100)		
B (81-91)		81
C (69-80)		
D (55-68)	63	
E (39-54)		
F (21-38)		
G (1-20)		
Not energy efficient - higher running costs		
England, Scotland & Wales		EU Directive 2002/91/EC

Chestertons St John's Wood Sales

122 St John's Wood High Street

London

NW8 7SG

sales.stjohnswood@chestertons.co.uk

020 3040 8611

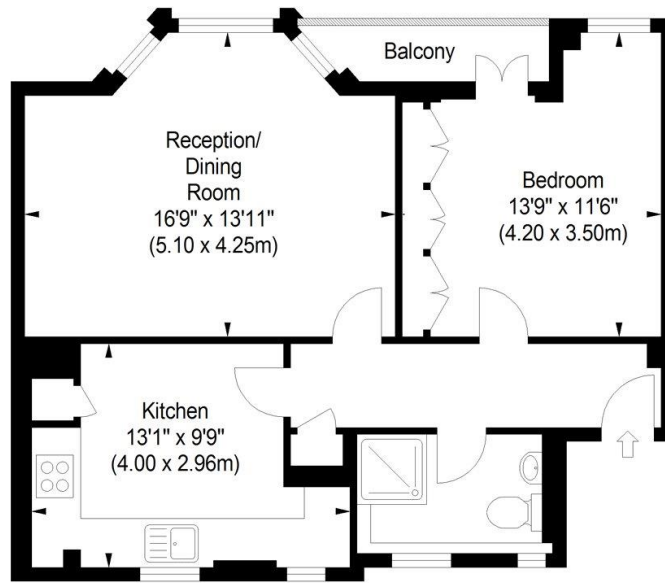
chestertons.co.uk



Neville Court, NW8

Approximate Gross Internal Area

615 sq ft / 57.13 sq m



Seventh Floor

ILLUSTRATION FOR IDENTIFICATION PURPOSES ONLY

ALL MEASUREMENTS ARE MAXIMUM, AND INCLUDE WINDOW BAYS AND WARDROBES WHERE APPLICABLE
THIS PLAN MUST NOT BE REPRODUCED BY ANY OTHER PERSON WITHOUT PERMISSION

