

BARTON FLEMING LETTINGS Ltd.

INDEPENDENT LETTING AGENTS

To Let



**59 RUSKIN WALK
BICESTER
OX26 4TE**

BARTON FLEMING LETTINGS Ltd.

INDEPENDENT LETTING AGENTS

Web: www.bartonfleming.co.uk

E-mail: lettings@bartonfleming.co.uk

62 North Street, Bicester. OX26 6NF

Tel: Bicester (01869)

241616

59 RUSKIN WALK, BICESTER. OX26 4TE



A Two Bedroom End-Terrace overlooking green space to the front and within walking distance of Bicester North Station.

TO LET

£1200.00 PCM

- ❖ Entrance Hall
- ❖ Lounge Diner
- ❖ Kitchen
- ❖ Utility Lean To & Outside Store
- ❖ Landing, Two Double Bedrooms
- ❖ Bathroom
- ❖ Front & Rear Gardens
- ❖ Outlook over Green Spaces

VIEWING AP-
POINTMENT:

DAY:

TIME:

Telephone 241616

BARTON FLEMING LETTINGS Ltd.

INDEPENDENT LETTING AGENTS

Web: www.bartonfleming.co.uk
E-mail: lettings@bartonfleming.co.uk
62 North Street, Bicester. OX26 6NF

Tel: Bicester (01869)

241616

Key Facts for Tenants:

EPC – C, 72.

Material Property Information

Council Tax Band B /

Rental Asking Price £1200

Length of tenancy: 12 months

Rental deposit
£1384.62 (Equal to five weeks rent.)

TenureFreehold

Property construction Standard

Mains Electricity supply Yes

Mains Gas Supply Yes

Mains Water supply Yes

Mains Sewerage Yes

Heating Type Gas

Broadband Fibre to Cabinet and Copper to House

Parking..... In nearby Layby

No of Parking Spaces0

Building safety Any known factors /No

Restrictions /Rights and easements (Any Restrictive covenants and Rights of Way or Easements or Wayleaves on the title..... No

Flood risk - has the property been subject to any flooding in the last 5 years No

Planning permission – Does the property have any outstanding planning applications No

Accessibility/adaptations - Does the property have any disabled access provisions No

Ground Floor:

ENTRANCE HALL:

LOUNGE-DINER: 19'5 x 11'2.

KITCHEN: 8'4 x 7'5.

UTILITY LEAN-TO:

SHED/WORKSHOP:

First Floor:

LANDING:

BEDROOM ONE: 14'3 x 9'0.

BEDROOM TWO: 11'5 x 10'2.

BATHROOM: 6'3 x 5'6.

Outside:

FRONT GARDEN:

REAR GARDEN:

Parking:

There is no parking within the plot. The parking lots and where the garages are located are owned by the local council and any parking spaces are on a first come, first served basis.

BARTON FLEMING LETTINGS Ltd.

INDEPENDENT LETTING AGENTS

Web: www.bartonfleming.co.uk
E-mail: lettings@bartonfleming.co.uk
62 North Street, Bicester. OX26 6NF

Tel: Bicester (01869)

241616



Front door and Hall



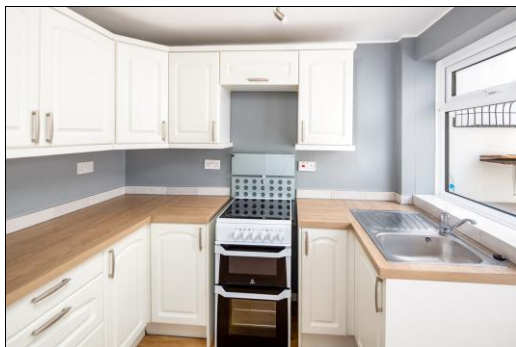
Lounge-Diner



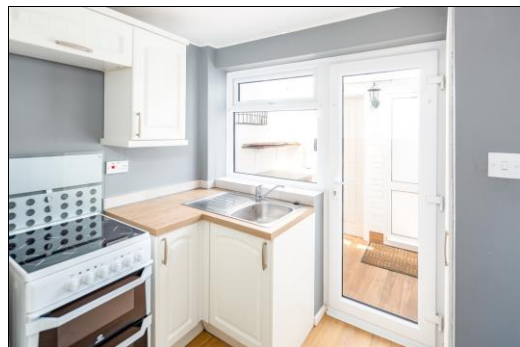
Lounge-Diner



Lounge-Diner



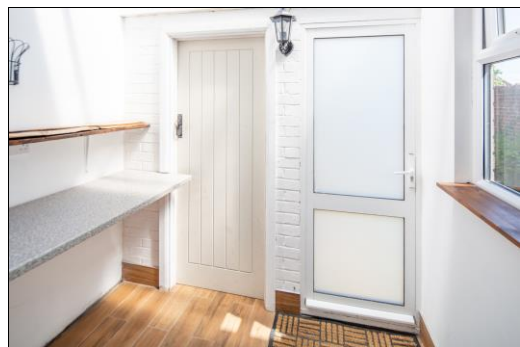
Kitchen



Kitchen



kitchen



Utility

BARTON FLEMING LETTINGS Ltd.

INDEPENDENT LETTING AGENTS

Web: www.bartonfleming.co.uk
E-mail: lettings@bartonfleming.co.uk
62 North Street, Bicester. OX26 6NF

Tel: Bicester (01869)

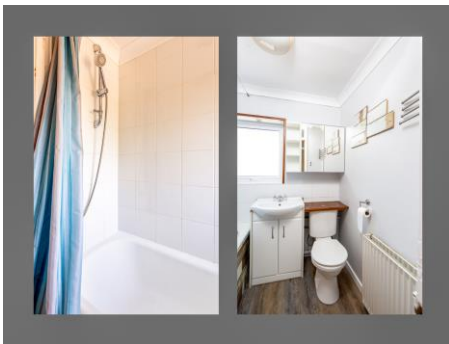
241616



Shed



Landing



Bathroom



Bedroom One



Bedroom One



Bedroom Two



Bedroom Two

BARTON FLEMING LETTINGS Ltd.

INDEPENDENT LETTING AGENTS

Web: www.bartonfleming.co.uk
E-mail: lettings@bartonfleming.co.uk
62 North Street, Bicester. OX26 6NF

Tel: Bicester (01869)

241616



Shower over the bath



Bathroom



Rear Garden



Rear Elevation



Surrounding Green



Surrounding Green

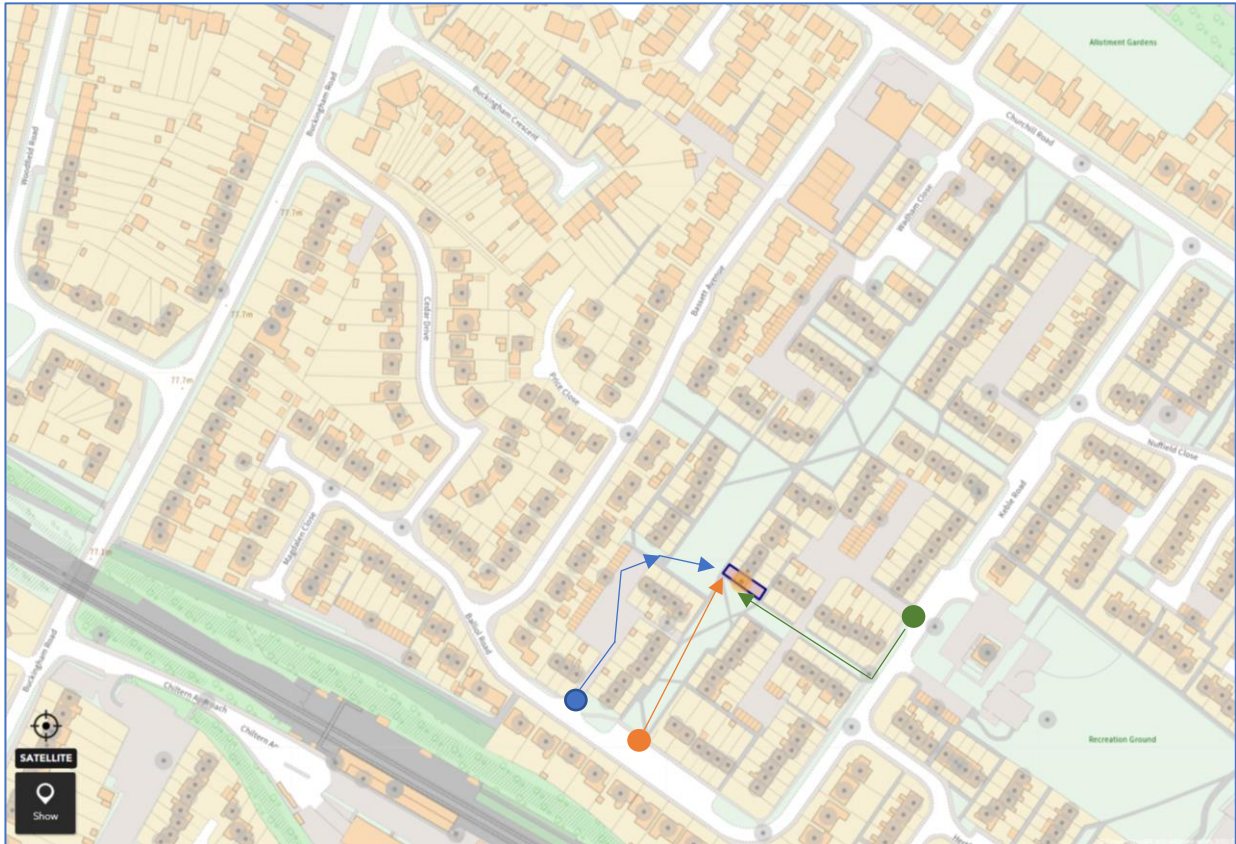
BARTON FLEMING LETTINGS Ltd.

INDEPENDENT LETTING AGENTS

Web: www.bartonfleming.co.uk
E-mail: lettings@bartonfleming.co.uk
62 North Street, Bicester. OX26 6NF

Tel: Bicester (01869)

241616



To Make an offer to rent the property

Please send an e-mail to:

E-mail: lettings@bartonfleming.co.uk

Including :

Full names of all adult occupants

Emails and telephone numbers for all tenants

Occupations of all tenants

Gross annual salaries for all tenants including contracted hours of employment

Details of any children

Details of any pets

Required Tenancy Start date

Length of tenancy required

Any special conditions or requirements

We will then put your offer to rent the property forward to the landlord.

BARTON FLEMING LETTINGS Ltd.

INDEPENDENT LETTING AGENTS

Web: www.bartonfleming.co.uk

E-mail: lettings@bartonfleming.co.uk

62 North Street, Bicester. OX26 6NF

Tel: Bicester (01869)

241616

